

FOR LEASE

WILSONVILLE BUSINESS CENTER BUILDING 30

27350 SW 95TH AVENUE :: WILSONVILLE, OR 97070

Get out of the congestion of Beaverton and Hillsboro and discover the easily accessible and highly functional flex/warehouse opportunities in Wilsonville, OR, at Wilsonville Business Center. Wilsonville Business Center offers immediate access to I-5 and the surrounding service areas of south Portland. It is convenient to a highly trained work force and an array of area amenities that provide essential services to the areas employment base.



www.cbre.com/wbc

LOCATION MAP



FEATURES:

- Corporate image and street identity to SW 95th Avenue
- Numerous space configurations (see floor plan on back)
- 15' clear height
- 3.4/1,000 parking
- Grade level loading with common-dock access
- Easy access to I-5 and I-205
- Competitive lease rates (Call to request pricing sheet)

**FOR MORE
INFORMATION
PLEASE
CONTACT**

Andy Kangas

503.221.4874

andy.kangas@cbre.com

www.cbre.com/andy.kangas

Stuart Skaug

503.221.4822

stuart.skaug@cbre.com

www.cbre.com/stuart.skaug

CBRE
CB RICHARD ELLIS

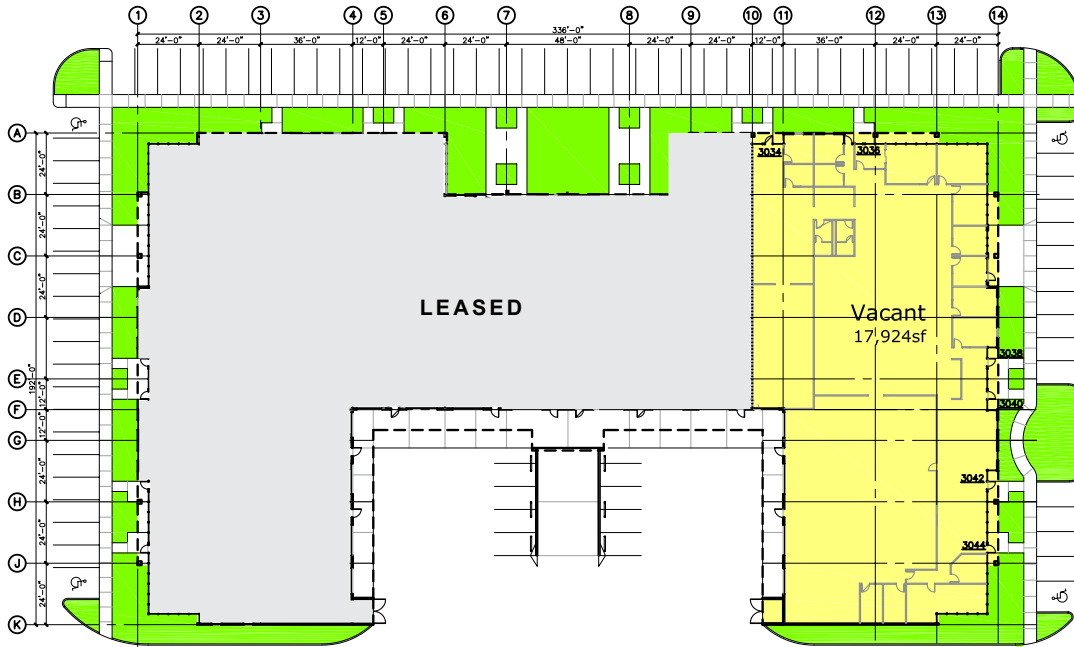
FOR LEASE



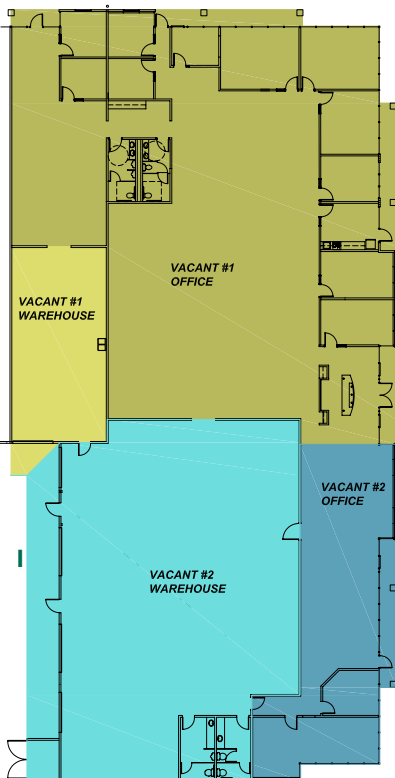
WILSONVILLE BUSINESS CENTER - BUILDING 30

27350 SW 95TH AVENUE :: WILSONVILLE, OR 97070

BUILDING 30:



BUILDING 30 OPTION A:



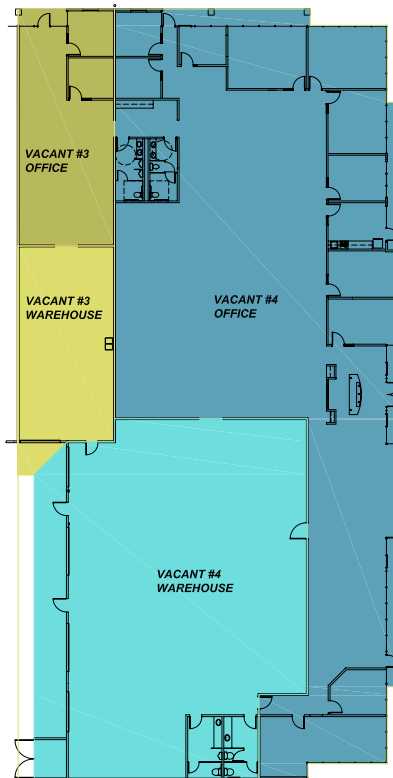
OPTION A:

VACANT #1:
 8,788 SF(OFFICE)
 1,249 SF(WAREHOUSE)
 10,037 SF(TOTAL)

VACANT #2:
 2,113 SF (OFFICE)
 5,774 SF (WAREHOUSE)
 7,887 SF (TOTAL)

BUILDING TOTAL
 17,924 SF

BUILDING 30 OPTION B:



OPTION B:

VACANT #3:
 1,430 SF (OFFICE)
 1,249 SF (WAREHOUSE)
 2,679 SF (TOTAL)

VACANT #4:
 9,471 SF (OFFICE)
 5,774 SF (WAREHOUSE)
 15,245 SF (TOTAL)

BUILDING TOTAL
 17,924 SF



CB Richard Ellis | 1300 SW Fifth Ave. | Suite 200 | Portland, OR 97201

© 2009 CB Richard Ellis, Inc. This information has been obtained from sources believed reliable. We have not verified it and make no guarantee, warranty or representation about it. Any projections, opinions, assumptions or estimates used are for example only and do not represent the current or future performance of the property. You and your advisors should conduct a careful, independent investigation of the property to determine to your satisfaction the suitability of the property for your needs.

