

# AVAILABLE FOR GROUND LEASE ±39.20 ACRES

SEC Alessandro Blvd. & I-215 Freeway | Riverside, CA 92518

For more information, contact:

**Frank Geraci**  
Executive Vice President  
909.418.2167  
frank.geraci@cbre.com

**Walt Chenoweth**  
Senior Vice President  
909.418.2165  
walt.chenoweth@cbre.com

**Art Day**  
Senior Vice President  
909.418.2010  
art.day@cbre.com

**Dan de la Paz**  
Senior Vice President  
909.418.2169  
dan.delapaz@cbre.com

**Juan Gutierrez**  
Associate  
909.418.2156  
juan.gutierrez@cbre.com

**Patrick Wood**  
Industrial Properties  
909.418.2060  
patrick.wood@cbre.com

**CB Richard Ellis**  
4141 Inland Empire Boulevard  
Suite 100  
Ontario, CA 91764  
T 909.418.2000  
F 909.418.2100

[www.cbre.com/ontario](http://www.cbre.com/ontario)



## FEATURES

- ±39.20 Acres
- Long or short term ground lease available
- APN: 297-100-013  
297-100-045
- Foreign Trade Zone No. 244 designation
- 1.5 Miles to March Inland Port / Global Port
- Close to Meridian, LNR's 1,000 acre business park
- 1/2 Mile of I-215 freeway frontage (100,000 vehicles per day)
- Industrial Zoning
- ±Direct access to Alessandro Blvd., Cactus Avenue and I-215 freeway



**CBRE**  
CB RICHARD ELLIS

©2008, CB Richard Ellis, Inc. We obtained the information above from sources we believe to be reliable. However, we have not verified its accuracy and make no guarantee, warranty or representation about it. It is submitted subject to the possibility of errors, omissions, change of price, rental or other conditions, prior sale, lease or financing, or withdrawal without notice. We include projections, opinions, assumptions or estimates for example only, and they may not represent current or future performance of the property. You and your tax and legal advisors should conduct your own investigation of the property and transaction. CBRE, CB RICHARD ELLIS and the CBRE CB RICHARD ELLIS logo are service marks of CB Richard Ellis, Inc. and/or its affiliated or related companies in the United States and other countries. All other marks displayed on this document are the property of their respective owners.

**LNR**  
Property Corporation

# AVAILABLE FOR GROUND LEASE ±39.20 ACRES

SEC Alessandro Blvd. & I-215 Freeway | Riverside, CA 92518

## SITE PLAN

For more information, contact:

**Frank Geraci**  
Executive Vice President  
909.418.2167  
frank.geraci@cbre.com

**Walt Chenoweth**  
Senior Vice President  
909.418.2165  
walt.chenoweth@cbre.com

**Art Day**  
Senior Vice President  
909.418.2010  
art.day@cbre.com

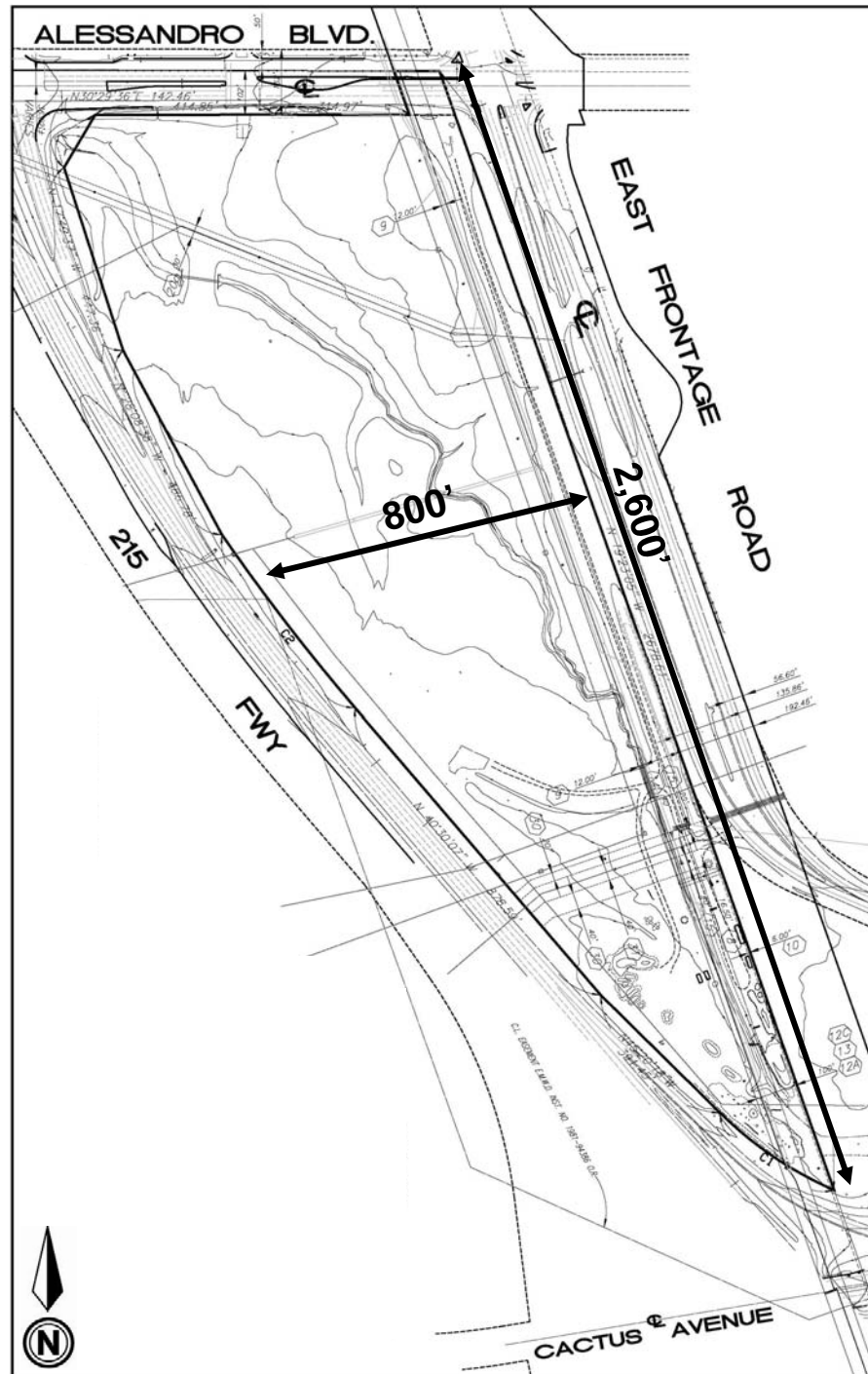
**Dan de la Paz**  
Senior Vice President  
909.418.2169  
dan.delapaz@cbre.com

**Juan Gutierrez**  
Associate  
909.418.2156  
juan.gutierrez@cbre.com

**Patrick Wood**  
Industrial Properties  
909.418.2060  
patrick.wood@cbre.com

CB Richard Ellis  
4141 Inland Empire Boulevard  
Suite 100  
Ontario, CA 91764  
T 909.418.2000  
F 909.418.2100

[www.cbre.com/ontario](http://www.cbre.com/ontario)



guarantee, warranty or representation about it. It is submitted subject to the possibility of errors, omissions, change of price, rental or other conditions, prior sale, lease or financing, or withdrawal without notice. We include projections, opinions, assumptions or estimates for example only, and they may not represent current or future performance of the property. You and your tax and legal advisors should conduct your own investigation of the property and transaction. CBRE, CB RICHARD ELLIS and the CBRE CB RICHARD ELLIS logo are service marks of CB Richard Ellis, Inc. and/or its affiliated or related companies in the United States and other countries. All other marks displayed on this document are the property of their respective owners.

**CBRE**  
CB RICHARD ELLIS

**LNR**  
Property Corporation