

FOR  
SALE

# PLATTED RESIDENTIAL LOTS

## 150 ACRES MOL

CITRUS SPRINGS BLVD & W. DELTONA BLVD :: CITRUS SPRINGS, FLORIDA



### FEATURES

- Price:** \$3,000,000
- Size:** 150 Acres MOL
- Location:** Citrus Springs Blvd and West Deltona Blvd  
Citrus Springs, Florida
- Land Use:** RMU (Residential Mixed Use)
- Zoning:** Planned Development Residential

FOR MORE  
INFORMATION  
PLEASE  
CONTACT

**Jarib Rodriguez, ALC**  
Associate  
T 813.273.8446  
F 813.223.7144  
jarib.rodiguez@cbre.com

**CBRE**  
CB RICHARD ELLIS

FOR  
SALE

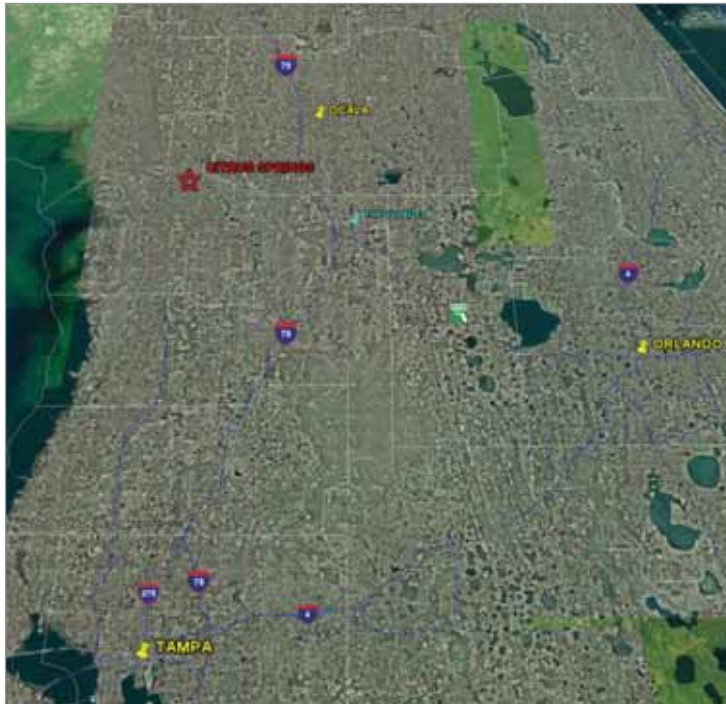


# PLATTED RESIDENTIAL LOTS FOR SALE

150 ACRES MOL

CITRUS SPRINGS BLVD & W. DELTONA BLVD :: CITRUS SPRINGS, FLORIDA

## STATE LOCATION MAP



## LOCATION MAP



### DEMOGRAPHICS

	5 Miles	10 Miles	20 Miles
Estimated Population	16,748	64,228	191,834
Estimated Median Age	46.15	51.07	52.84
Estimated Households	7,288	28,951	87,597
Estimated Median Household Income	\$35,043	\$38,172	\$38,499

FOR MORE  
INFORMATION  
PLEASE  
CONTACT

**Jarib Rodriguez, ALC**

Associate

T 813.273.8446

F 813.223.7144

jarib.rodriguez@cbre.com

CB Richard Ellis | 201 E Kennedy Blvd | Suite 1500 | Tampa, FL 33602 | [www.cbre.com/tampa](http://www.cbre.com/tampa)

©2009 CB Richard Ellis, Inc. Licensed Real Estate Broker. The information above has been obtained from sources believed reliable. While we do not doubt its accuracy, we have not verified it and make no guarantee, warranty or representation about it. It is your responsibility to independently confirm its accuracy and completeness.

**CBRE**  
CB RICHARD ELLIS