

FOR
SUBLEASE

12655 W. JEFFERSON BLVD.

LOS ANGELES, CALIFORNIA



FLOOR/AREA: Entire 3rd - 14,500 RSF

POSSESSION: Available Immediately

TERM: Until July 31, 2015

RENTAL RATE: \$2.50 per rentable square foot, per month, FSG

PARKING: 3 per 1,000 RSF (more possible) at current building rates

AMENITIES:

- In the new vibrant Playa Vista area, one of the largest mixed-use development projects in Southern California
- Close to Marina del Rey, Culver City, El Segundo and the South Bay
- The fastest growing area in the Westside of Los Angeles
- Close to Los Angeles International Airport (LAX)
- Flexible, multi-use, campus style building

FOR MORE
INFORMATION
PLEASE
CONTACT

Nick Christensen
310.550.2541
nick.christensen@cbre.com

Gunter Prentner
310.550.2605
gunter.prentner@cbre.com

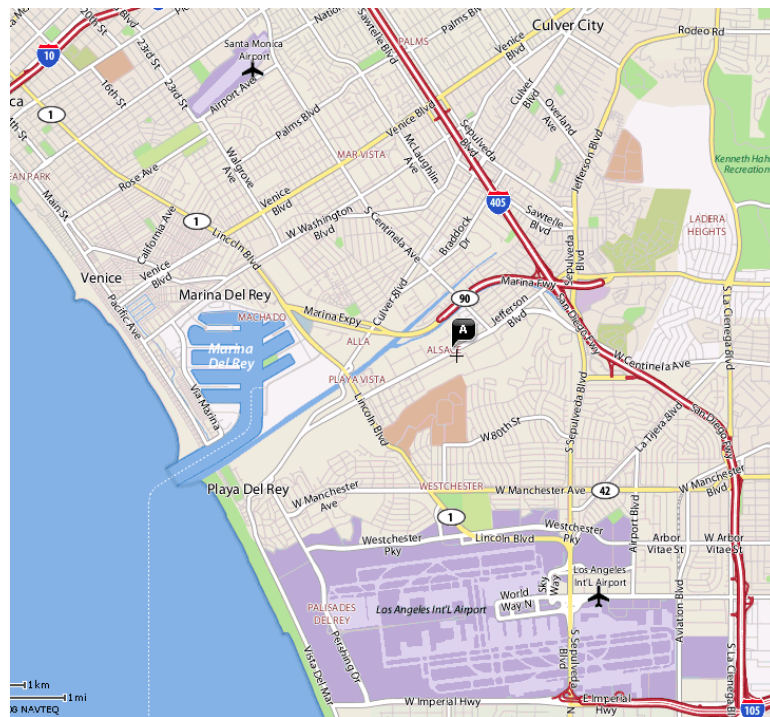
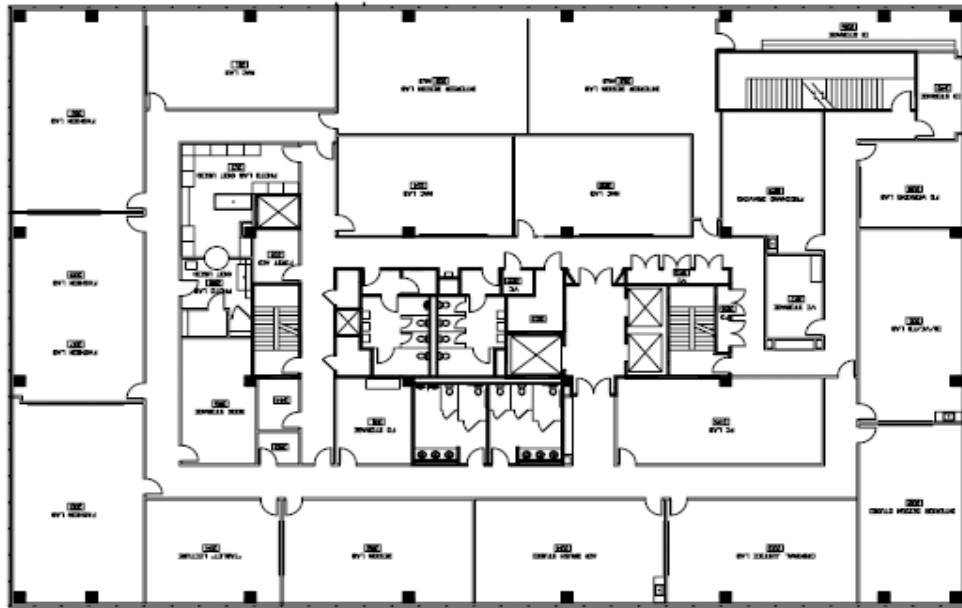
CBRE
CB RICHARD ELLIS

FOR
SUBLEASE

12655 W. JEFFERSON BLVD.

LOS ANGELES, CALIFORNIA

3rd FLOOR



FOR MORE
INFORMATION
PLEASE
CONTACT

Nick Christensen

310.550.2541

nick.christensen@cbre.com

Gunter Prentner

310.550.2605

gunter.prentner@cbre.com

CBRE
CB RICHARD ELLIS

CB Richard Ellis | 1840 Century Park East | Suite 700 | Los Angeles, CA 90067 | www.cbre.com

©2009 CB Richard Ellis, Inc. The information above has been obtained from sources believed reliable. While we do not doubt its accuracy, we have not verified it and make no guarantee, warranty or representation about it. It is your responsibility to independently confirm its accuracy and completeness.