

# The Crosthwaite Building | 100 Allyn Street Hartford, Connecticut



For more information, please contact:

**Alyson Ideman**

**860.987.4738**

alyson.ideman@cbre-ne.com

**Bob Botters**

**860.987.4783**

bob.botters@cbre-ne.com

**CB Richard Ellis**

CityPlace I, 27th Floor

Hartford, Connecticut 06103

860.525.9171 Fax 860.249.7916

www.cbre.com/hartford

**CBRE**  
CB RICHARD ELLIS

## Retail Space Available for Lease

CB Richard Ellis is pleased to offer street level retail space for lease at The Crosthwaite Building. The building is centrally located at 100 Allyn Street, on the corner of Allyn and Ann Streets in downtown Hartford. As one of the Hartford's most attractive historical buildings with its red-brick facade, 100 Allyn Street is listed on the National Register of Historical Places. Building improvements include a modern lobby featuring marble floors, soft lighting and mahogany wood trim. Finishes include exposed brick walls, hardwood floors and modern Thermopane windows providing energy-efficient comfort with ample natural light.

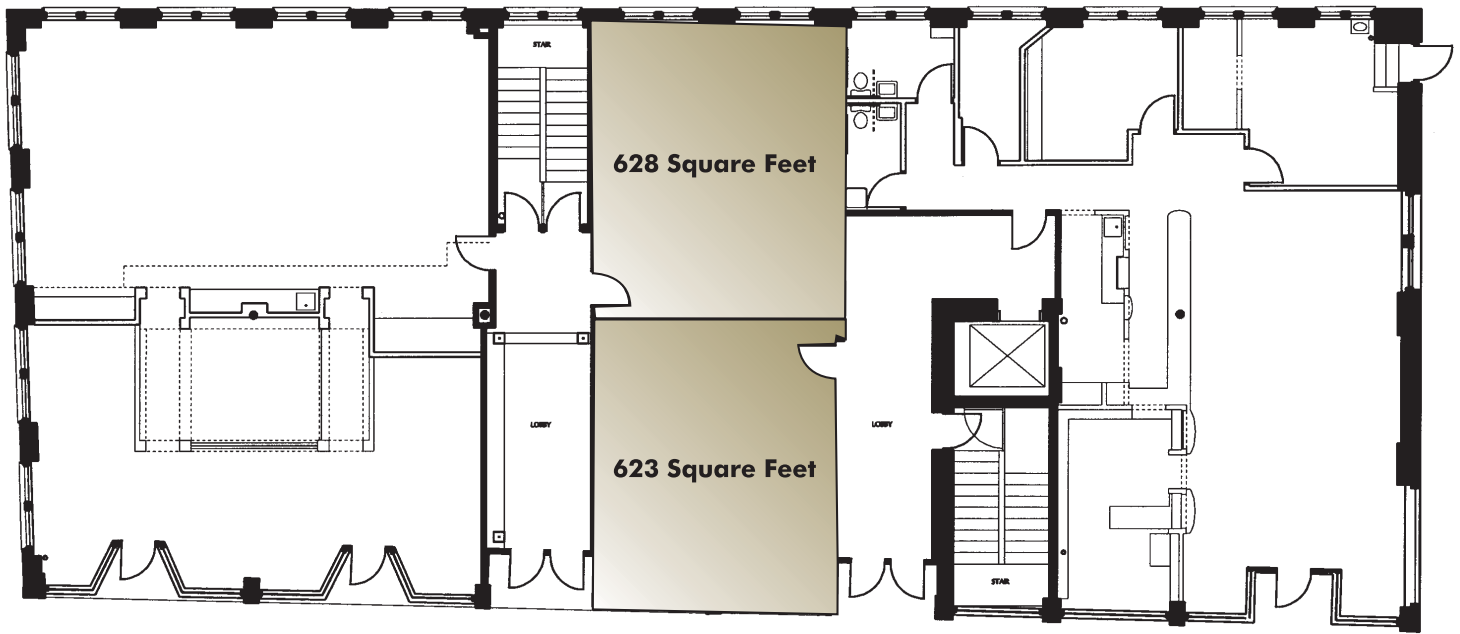
## Building Specifications

- Street level retail space with large windows on Allyn Street
- Street parking available in front of the building as well as in numerous nearby surface lots & garages
- Total building size 30,647 SF
- Home to Agave Grill, Hartford's only full-service Southwestern Restaurant
- Located across the street from Hartford 21/Civic Center, the site of Hartford's newest mixed-use development (to be completed in 2006)
- Basement storage available (from 500 SF to 4,800 SF)
- Easily accessible to and from all major highways

# The Crosthwaite Building | 100 Allyn Street

Hartford, Connecticut

## 1st Floor Retail Space



Two suites are currently available on the 1st floor of 100 Allyn Street. The suites can easily be combined to accommodate a 1,251 SF need.



For more information or to schedule a tour of the property, please contact Alyson Ideman or Bob Botters at 860.525.9171.

**CBRE**  
CB RICHARD ELLIS

Property owned & managed by:

