

FOR
SALE

PEARL ROAD HEALTH CENTER

4269 PEARL ROAD :: CLEVELAND, OHIO 44109

MEDICAL OFFICE
BUILDING
FOR SALE . . .

*. . . although
it does not have
to be medical*



Adjacent to
MetroHealth Hospital's South Campus

GREAT LOCATION

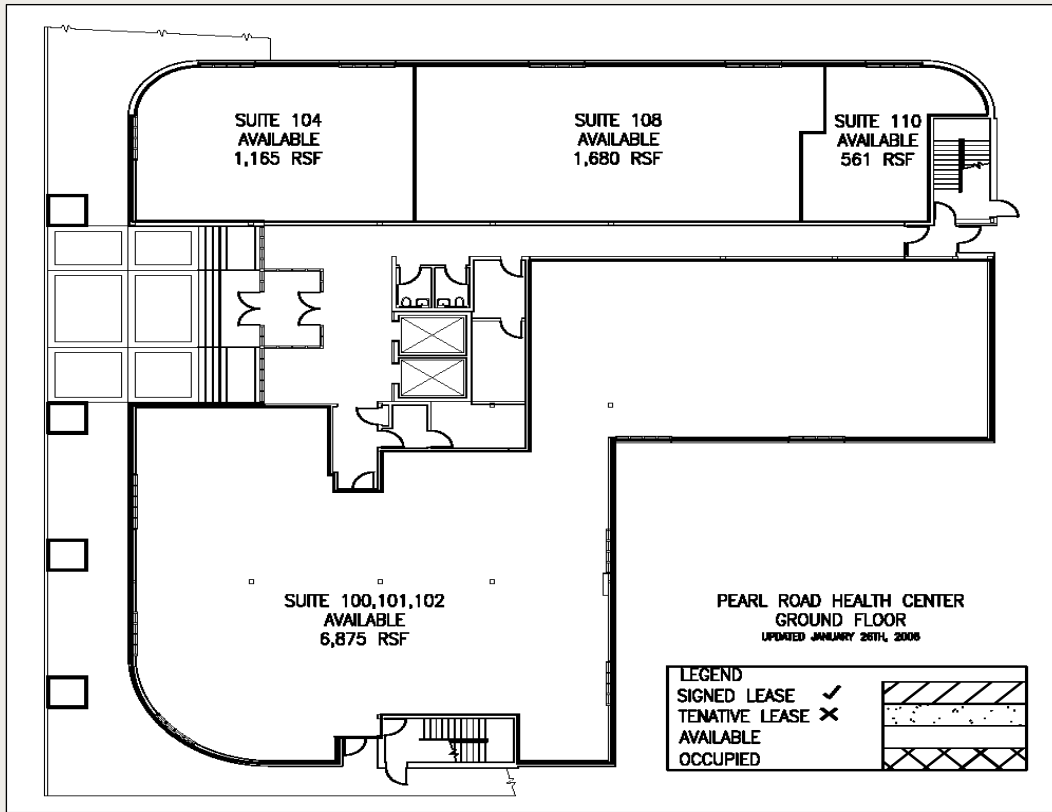
- Four-Story, 41,000 Square Foot Multi-Discipline Medical Facility
- Located between Interstates I-480 and I-71
- W. 25th Street/Pearl Road is the "Other" technology and medical research corridor
- Opportunity for owners to occupy
- Free access to seven-story parking garage
- Adjacent surface lot (22 spaces) for preferred parking

www.cbre.com/4269pearl

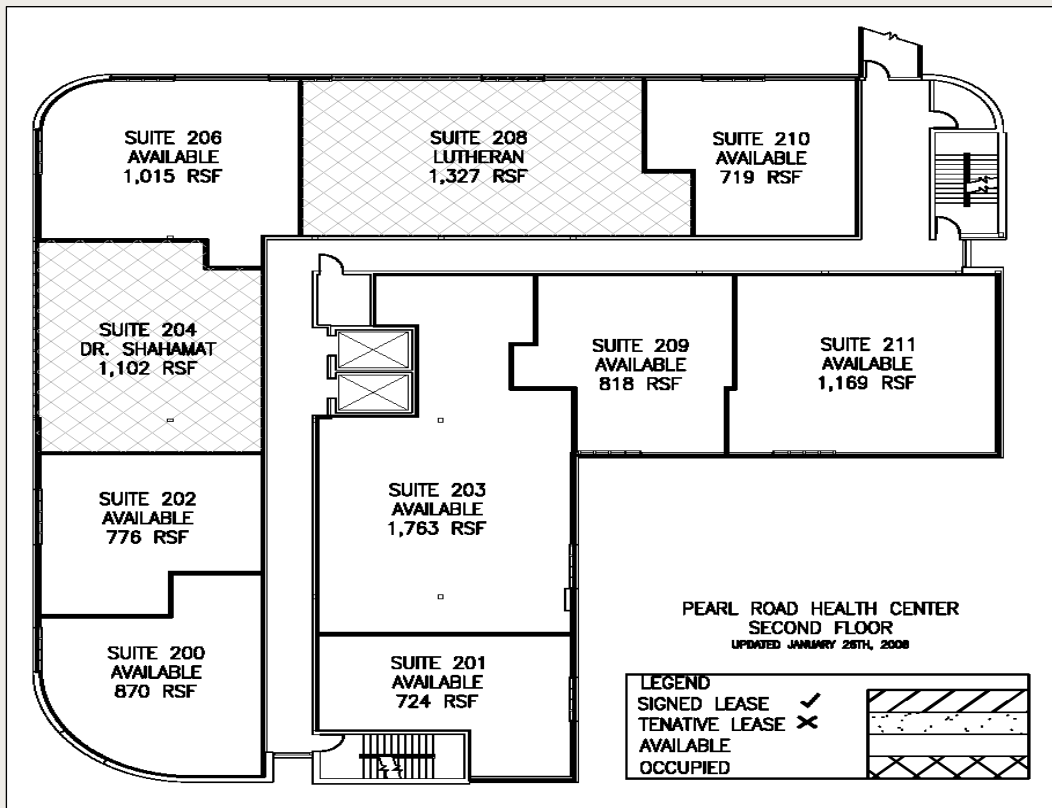
CBRE
CB RICHARD ELLIS

FLOOR PLANS

FIRST FLOOR

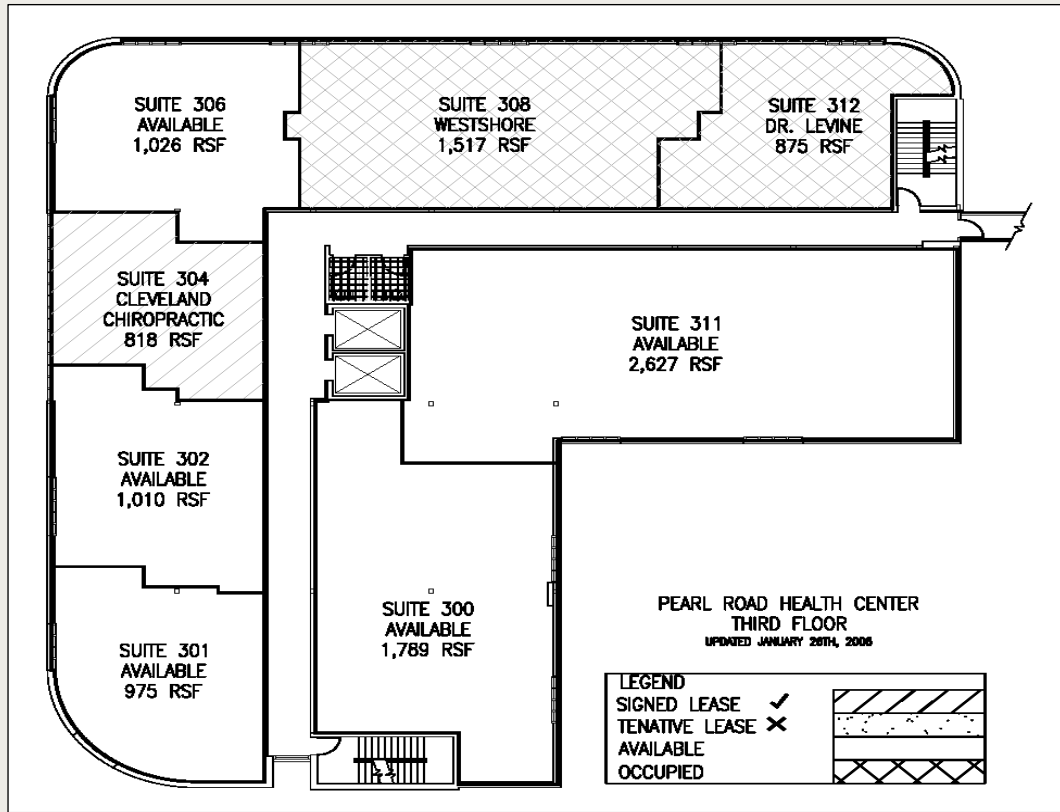


SECOND FLOOR



FLOOR PLANS

THIRD FLOOR



FOURTH FLOOR

