



## PALM BEACH ISLAND

OFFICE & RETAIL SPACE  
FOR LEASE

223 SUNSET AVENUE  
PALM BEACH, FLORIDA 33480

**CBRE**





## PROPERTY FEATURES

Significant Lobby and Common Area Renovations

Spec Suites Coming Soon

Brand New Elevator & Renovated Restrooms

Enhanced Landscape

Trevini Ristorante on the First Floor, with both Indoor and Outdoor Seating

New Hurricane Impact Windows

## BUILDING FEATURES

Total RSF: 21,607 SF

Office Space Available:  
1st Floor: 1,900 SF  
2nd Floor: 1,900 - 7,700 SF

Parking: Underground Parking

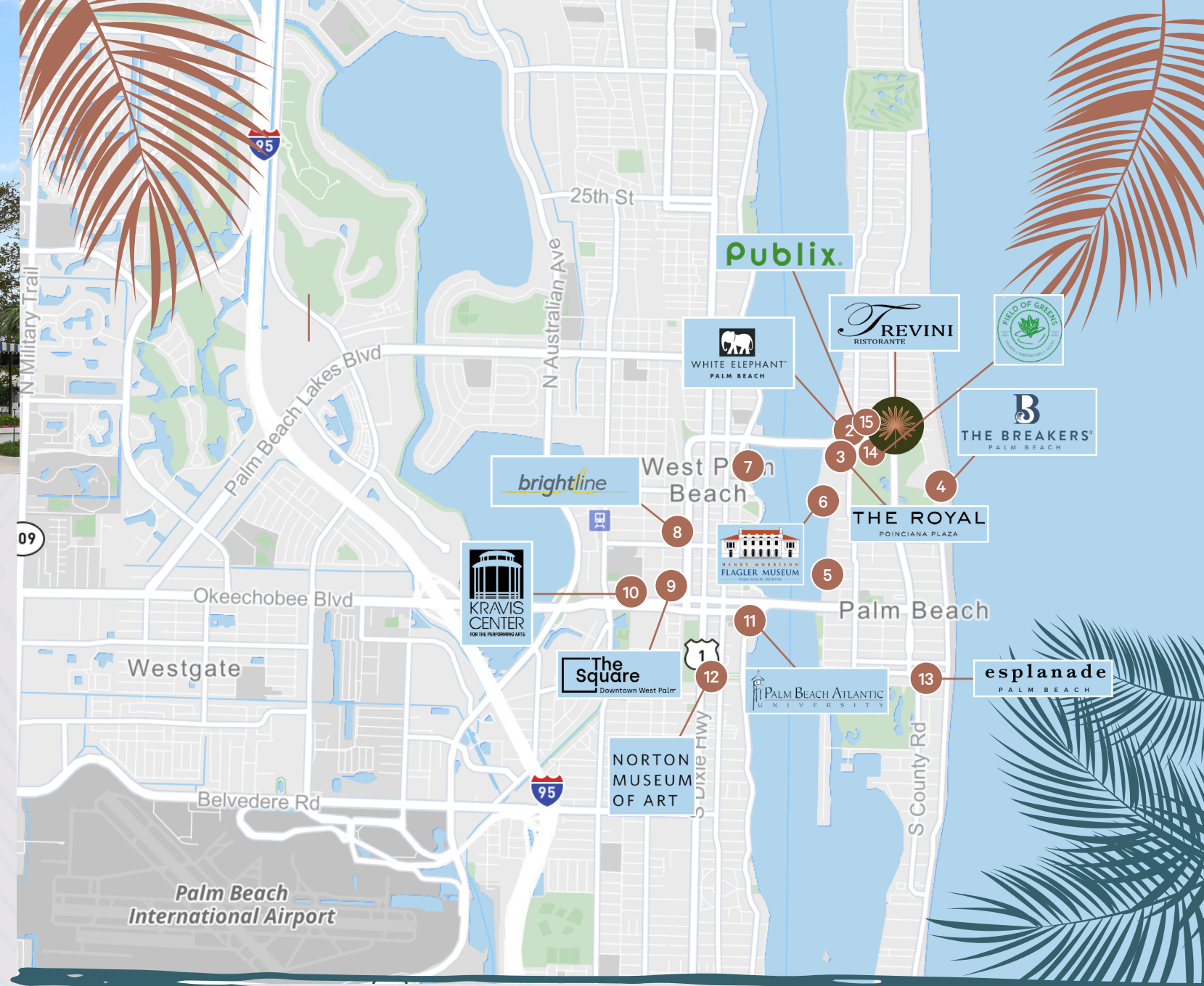
On-site Management Office



### RESTURANTS WITHIN WALKING DISTANCE



HENRY'S PALM BEACH



- 1 223 SUNSET AVE
- 2 WHITE ELEPHANT PALM BEACH HOTEL
- 3 THE ROYAL POINCIANA PLAZA
- 4 THE BREAKERS
- 5 THE PALM BEACH LAKE TRAIL
- 6 HENRY MORRISON FLAGLER MUSEUM
- 7 THE WATERVIEW TOWERS
- 8 BRIGHTLINE
- 9 THE SQUARE
- 10 KRAVIS CENTER FOR THE PERFORMING ARTS
- 11 PALM BEACH ATLANTIC UNIVERSITY
- 12 NORTON MUSEUM OF ART
- 13 THE ESPLANADE
- 14 FIELDS OF GREEN
- 15 PUBLIX

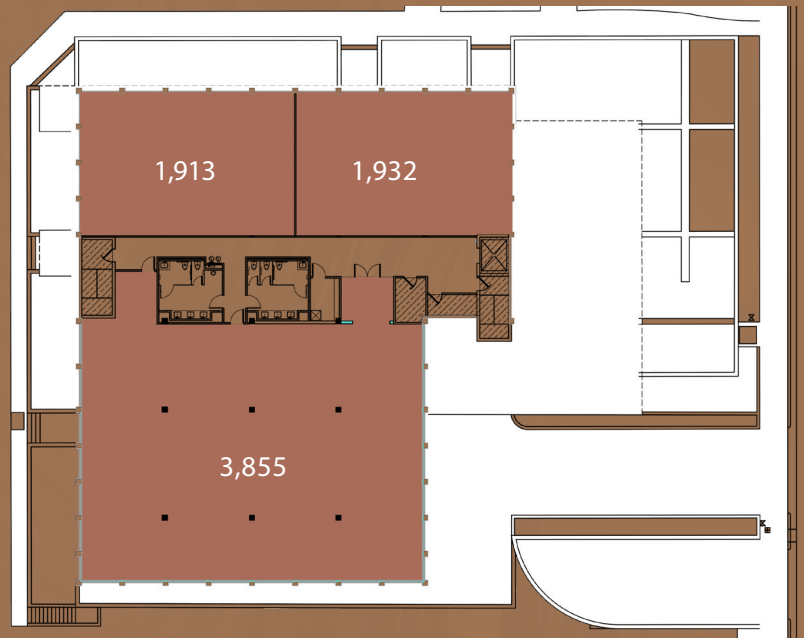
# FIRST FLOOR

1,958 SF



# SECOND FLOOR

1,900 - 7,700 SF



**MAX PAWK**  
1 561 393 1670  
max.pawk@cbre.com

**JOHN CRIDDLE**  
1 561 283 5176  
john.criddle@cbre.com

**JOE FREITAS**  
1 561 512 8844  
joe.freitas@cbre.com

**CBRE**

© 2023 CBRE, Inc. All rights reserved. This information has been obtained from sources believed reliable, but has not been verified for accuracy or completeness. You should conduct a careful, independent investigation of the property and verify all information. Any reliance on this information is solely at your own risk. CBRE and the CBRE logo are service marks of CBRE, Inc. All other marks displayed on this document are the property of their respective owners, and the use of such logos does not imply any affiliation with or endorsement of CBRE. Photos herein are the property of their respective owners. Use of these images without the express written consent of the owner is prohibited. PMSstudio\_MARCH2023