

# PACIFIC

RESEARCH CENTER

7333-7999 GATEWAY BOULEVARD, NEWARK, CA

# Innovation Starts Here

Fully Amenitized Class A Life Science  
Campus in the East Bay



[PACIFICRESEARCHCENTER.COM](http://PACIFICRESEARCHCENTER.COM)

A  BioMed Realty property

**CBRE**

# About Pacific Research Center

This unique multi-tenant research campus consists of ten buildings, comprising 1.4 million square feet of space ideal for life sciences, office, high tech, and data center users.

Located immediately off of Highway 84 and the Dumbarton Bridge, and a short distance from Palo Alto, Stanford University and the greater Silicon Valley region to the west.

Offers excellent freeway visibility and presents tenants a secure and prominent corporate presence.



**1.4M**

TOTAL  
SQUARE FEET



**10**

BUILDING  
CAMPUS



**55K SF**

AMENITIES  
BUILDING



**68K**

VELOCITY LABS  
MOVE-IN READY

# On-Site Amenities



DAILY SHUTTLE TO AND FROM UNION CITY BART STATION & ACE RAIL



FULL-SERVICE CAFETERIA PROVIDED BY EUREST



GAME ROOM



BASKETBALL AND VOLLEYBALL COURTS



FITNESS CENTER OPERATED BY MOBIUS FIT



6 CONFERENCE ROOMS ACCOMMODATING UP TO 200 PEOPLE



PURPLE TIE LAUNDRY SERVICE



20 ELECTRIC CAR CHARGING STATIONS



FULL-SERVICE CAFETERIA



CONFERENCE ROOM (1/6)



FITNESS CENTER



CAMPUS ENVIRONMENT



# Availabilities

BUILDING	SIZE
1 7333 Gateway Blvd	Fully Leased
2 7555 Gateway Blvd	Fully Leased
3 7575 Gateway Blvd	Fully Leased
4 Amenities Building	N/A
5 7707 Gateway Blvd	±20,916-50,327 SF
6 7979 Gateway Blvd	±12,020 SF ±12,093-45,347 SF
7 7999 Gateway Blvd	±30,420-60,821 SF ±18,639 SF
8 7700 Gateway Blvd	±51,082-158,181 SF
9 7600 Gateway Blvd	Fully Leased
10 7500 Gateway Blvd	Fully Leased



# Velocity Labs

## Flexible, move-in ready lab and office space built for groundbreaking research

Pacific Research Center is now offering flexible, move-in ready lab and office space built for groundbreaking research.

BioMed Realty has developed move-in ready lab and office space at a premier selection of our Class A properties located in major life science ecosystems across the US and UK. With our vertically integrated platform that provides unmatched expertise and world-class quality, the Velocity Labs infrastructure and technology allow biotech innovators to execute mission-critical research and scale as needed, all while reducing expenditures.



## WHAT MAKES BIOMED REALTY VELOCITY LABS UNIQUE?



### FASTER TIME-TO-MARKET

Our move-in ready lab spaces creates a launchpad for our tenants, allowing them to conduct research effectively and efficiently, from day one.



### FLEXIBILITY & SCALABILITY

Our offering provides tenants with flexible layouts and frictionless upscaling opportunities across BioMed's entire portfolio – 16+ million square feet in leading innovation markets in the US and UK.



### WORLD-CLASS QUALITY

Velocity Labs are embedded within BioMed's Class A properties, giving companies of all sizes the advantages of world-class infrastructure and amenities specifically designed for the biotech industry's biggest names.



### ACCESS TO CAPITAL

As a Blackstone real estate portfolio company, BioMed Realty provides tenants with valuable opportunities to connect with capital investors through the life sciences investment group.



### SPECIALIZED & PURPOSE-BUILT

Our spaces are not just lab-capable, but lab-specialized – move-in ready and purpose-built down to the detailed industry requirements for plumbing, power, ventilation and more.



### CAPITAL SAVINGS

We offer our tenants optimal pricing structures to increase capital efficiency, enabling more effective resource allocation toward their science and research.



### TOP-TIER MARKETS

Occupancy at one of our properties provides an ideal location in the top-tier markets and submarkets of the US and UK, with close proximity to a vibrant life science ecosystem.



### THE BIOMED REALTY DIFFERENCE

Our fully integrated platform is highly differentiated by over 300 specialized experts in leasing, development, property management, facilities, and more.

# Building 5

7707 GATEWAY BLVD | SUITE 300 & 350



±20,916–50,327

RENTABLE  
SQUARE FEET



50/50

LAB / OFFICE SPACE SPLIT



13'6"

FLOOR-TO-FLOOR HEIGHT

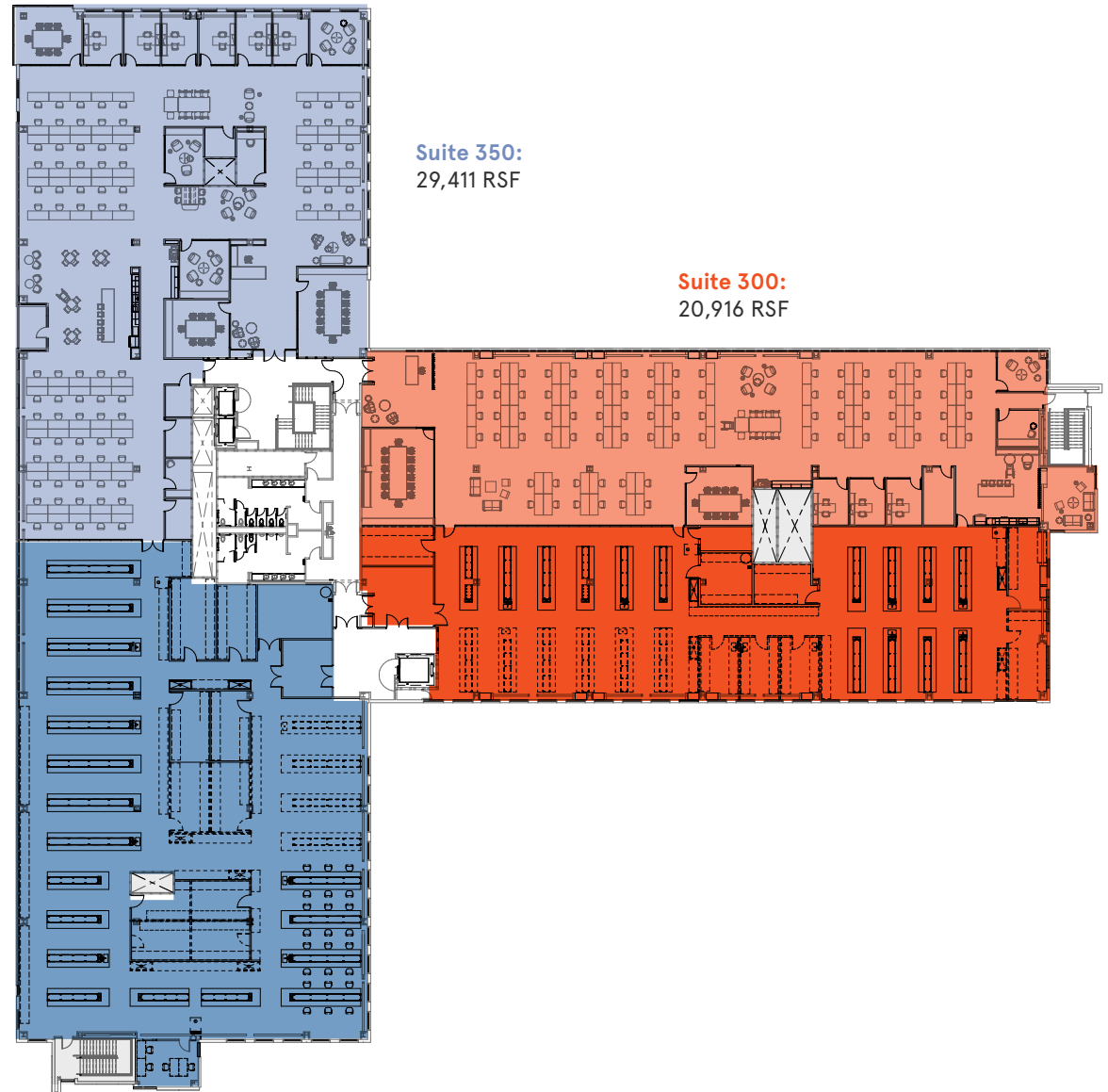


Available

NOW



- OFFICE - TENANT 1
- LABORATORY - TENANT 1
- OFFICE - TENANT 2
- LABORATORY - TENANT 2
- BUILDING SUPPORT



# Building 5

7707 GATEWAY BLVD | SUITE 300 & 350

## SUITE SPECS

### SUITE 300:

- 20,916 RSF
- 6 offices
- 3 conference room
- 3 huddle rooms
- 1 phone room
- 1 break room
- 1 wellness room
- 1 storage room
- 5 lab support rooms
- 1 utility room
- 1 receiving/storage room
- 2 existing six-foot fume hoods with mechanical capacity for up to 20 fume hoods
- 6 sinks

### SUITE 350:

- 29,411 RSF
- 3 offices
- 2 conference room
- 1 huddle room
- 1 break room
- 1 wellness room
- 3 lab support rooms
- 1 utility room
- 1 receiving/storage room
- 2 existing six-foot fume hoods with mechanical capacity for up to 12 fume hoods
- 6 sinks



# Building 7

7999 GATEWAY BLVD | SUITE 120



**±18,639**

RENTABLE  
SQUARE FEET



**50/50**

LAB / OFFICE SPACE SPLIT



**13'6"**

FLOOR-TO-FLOOR HEIGHT



**Available**

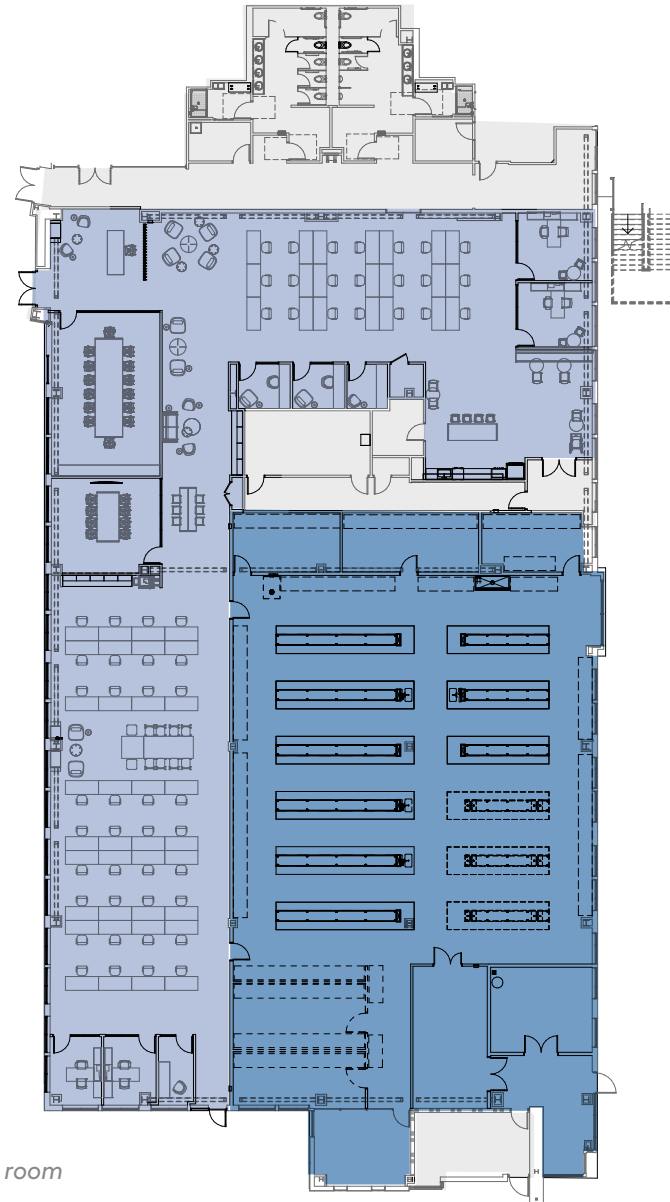
NOW

 **velocity labs**  
BY BIOMED REALTY

OFFICE

LABORATORY

BUILDING SUPPORT



 office and conference room  
furniture included

# Building 7

7999 GATEWAY BLVD | SUITE 120

## SUITE SPECS

### SUITE 120:

- 4 offices
- 2 conference rooms
- 3 phone rooms
- 1 break room
- 1 wellness room
- 4 lab support rooms
- 1 utility room
- 1 receiving/storage room
- 1 existing six-foot fume hood with mechanical capacity for up to 11 fume hoods
- 4 sinks



# Building 6

7979 GATEWAY BLVD | SUITES 101, 110 & 120



±12,093 –  
45,347

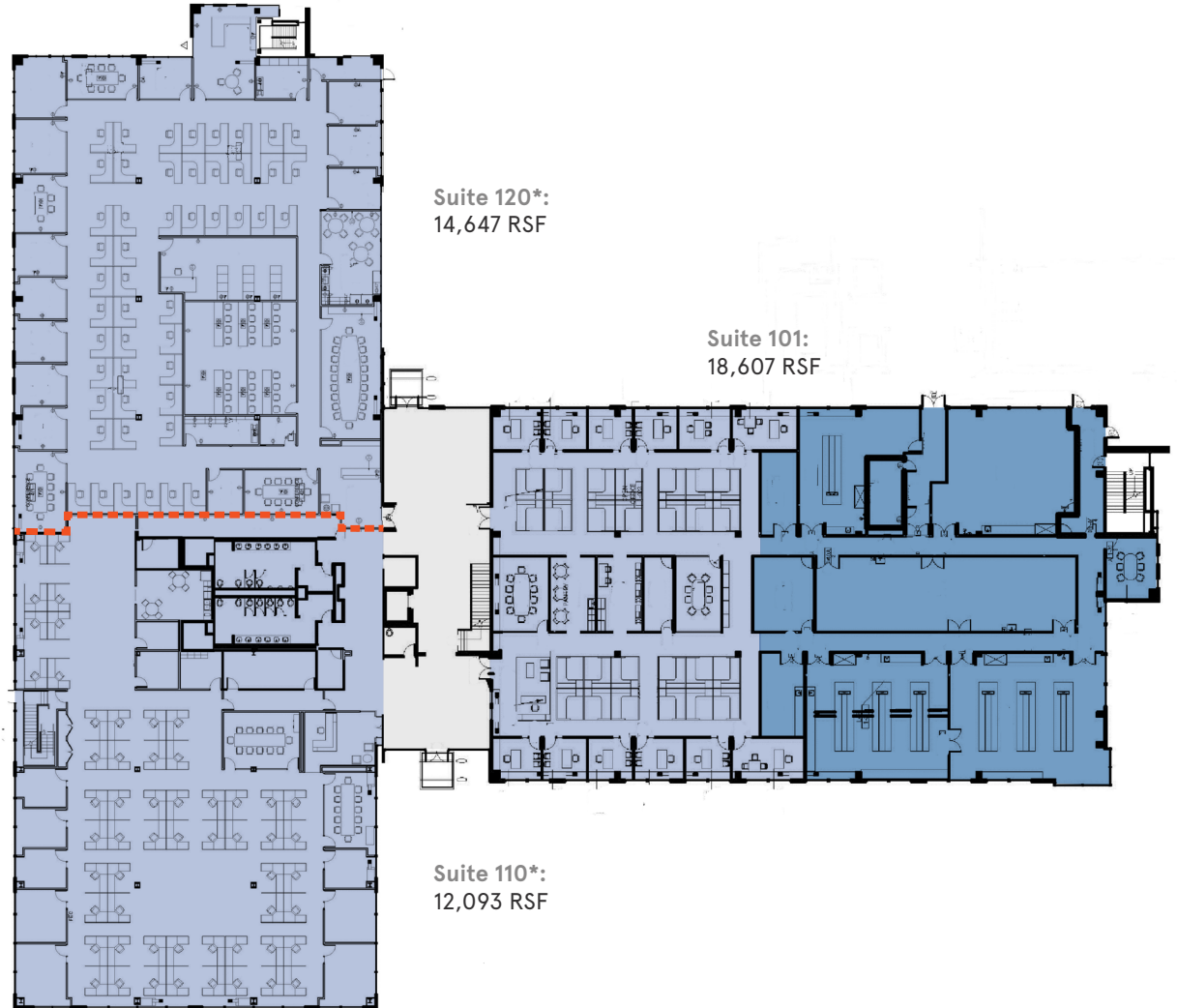
RENTABLE  
SQUARE FEET

Multiple upgraded private offices and  
conference rooms

Ample bullpen/open office area

Data room and kitchen/break area

OFFICE LABORATORY BUILDING SUPPORT



\*Suites 110 & 120 can be contiguous for a total of 26,740 SF

Office furniture not included

# Building 6

7979 GATEWAY BLVD | SUITE 210



**±12,020**

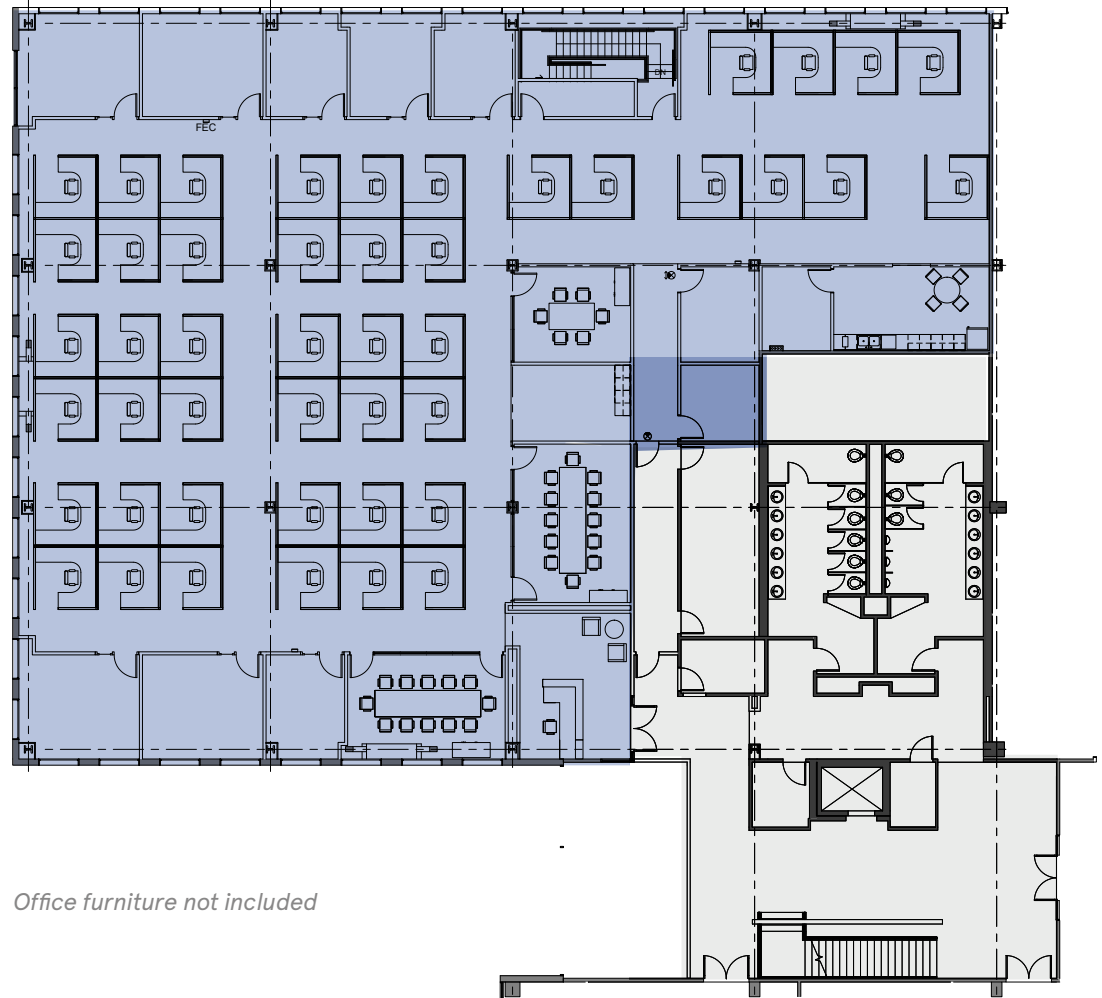
RENTABLE  
SQUARE FEET

Multiple upgraded private offices and  
conference rooms

Ample bullpen/open office area

Data room and kitchen/break area

OFFICE BUILDING SUPPORT



*Office furniture not included*

# Building 7

7999 GATEWAY BLVD | SUITE 300 & 320



±30,420 -  
60,821

RENTABLE  
SQUARE FEET

BSL 2 lab and lab support areas

Ample open areas

Mix of private offices and conference rooms

Lab benches and fume hoods included

OFFICE      LABORATORY



*Office furniture not included*

# Building 8

7700 GATEWAY BLVD | 1ST - 3RD FLOORS

±51,082 -  
158,181

RENTABLE  
SQUARE FEET

Single building identity

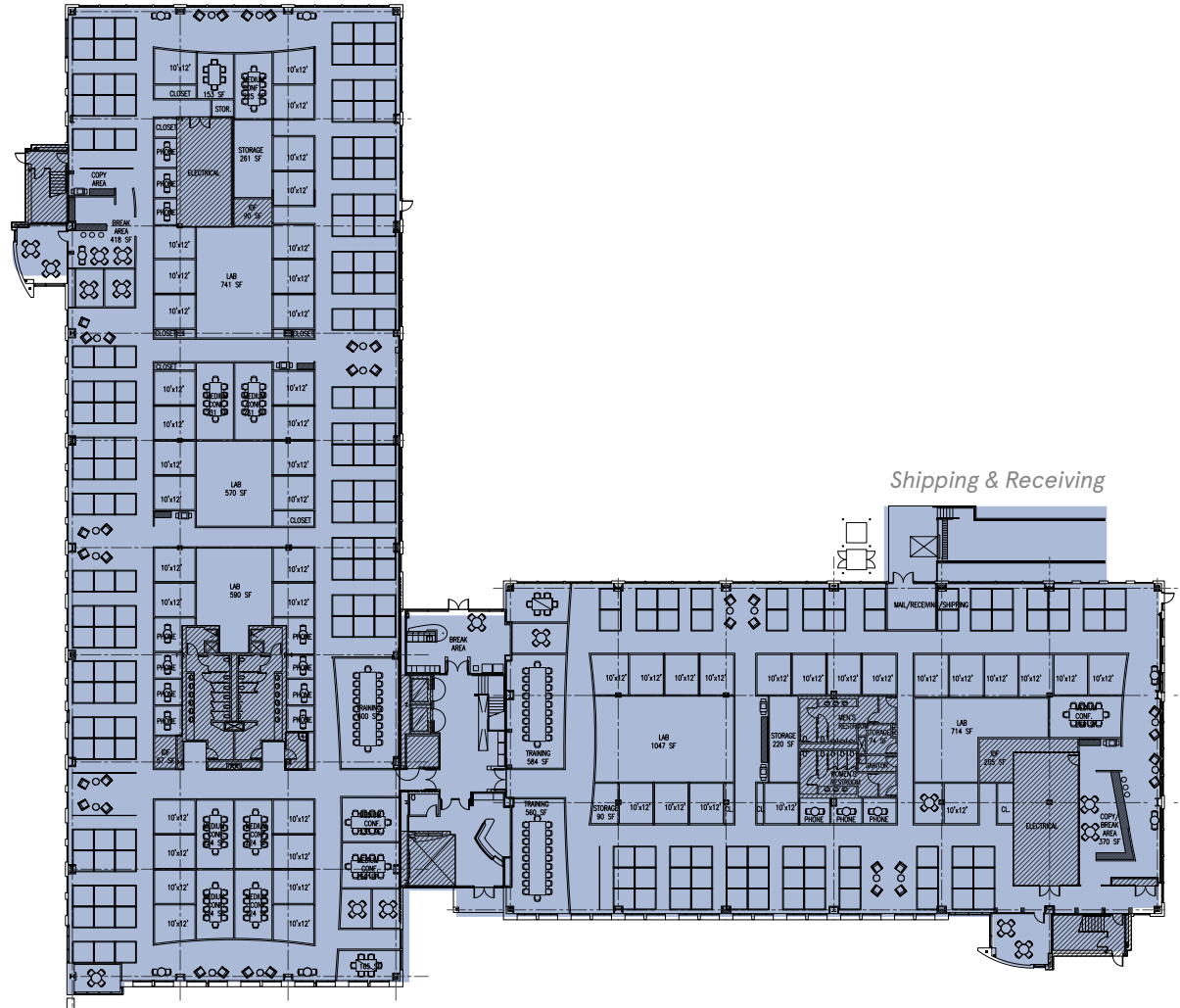
Open office areas

Multiple private offices and conference rooms

Kitchen and break areas

OFFICE

## FIRST FLOOR



FLOOR PLANS VARY BY FLOOR

Office furniture not included

## AM Shuttle Schedule

**BUS 264**



FREMONT ACE	UNION CITY BART	ARDENWOOD PARK & RIDE	7999 GATEWAY	7979/7707 GATEWAY	7575/7555 GATEWAY	7500/7600 GATEWAY	7600 GATEWAY	7700 GATEWAY
5:57 AM	6:10 AM	6:44 AM	6:49 AM	6:51 AM	6:53 AM	6:54 AM	6:55 AM	6:57 AM
7:12 AM	7:33 AM	7:45 AM	8:02 AM	8:04 AM	8:06 AM	8:07 AM	8:08 AM	8:10 AM
8:30 AM	8:45 AM	9:18 AM	9:23 AM	9:25 AM	9:27 AM	9:28 AM	9:29 AM	9:31 AM

## AM Shuttle Schedule

**BUS 315**



UNION CITY BART	7999 GATEWAY	7979/7707 GATEWAY	7575/7555 GATEWAY	7500 GATEWAY	7600 GATEWAY	7700 GATEWAY
7:10 AM	7:25 AM	7:27 AM	7:30 AM	7:32 AM	7:33 AM	7:35 AM
8:10 AM	8:25 AM	8:27 AM	8:30 AM	8:32 AM	8:33 AM	8:35 AM
9:10 AM	9:25 AM	9:27 AM	9:30 AM	9:32 AM	9:33 AM	9:35 AM
10:10 AM	10:25 AM	10:27 AM	10:30 AM	10:32 AM	10:33 AM	10:35 AM

## PM Shuttle Schedule

**BUS 264**



7999 GATEWAY	7979/7707 GATEWAY	7575/7555 GATEWAY	7500 GATEWAY	7600 GATEWAY	7700 GATEWAY	ARDENWOOD PARK & RIDE	UNION CITY BART	FREMONT ACE
3:00 PM	3:02 PM	3:04 PM	3:07 PM	3:09 PM	3:10 PM	3:16 PM	3:26 PM	3:40 PM
4:00 PM	4:02 PM	4:04 PM	4:07 PM	4:09 PM	4:10 PM	4:16 PM	4:34 PM	4:44 PM
5:05 PM	5:07 PM	5:09 PM	5:12 PM	5:14 PM	5:15 PM	5:21 PM	5:39 PM	5:49 PM

## PM Shuttle Schedule

**BUS 315**



7999 GATEWAY	7979/7707 GATEWAY	7575/7555 GATEWAY	7500 GATEWAY	7600 GATEWAY	7700 GATEWAY	UNION CITY BART
4:10 PM	4:12 PM	4:14 PM	4:17 PM	4:18 PM	4:19 PM	4:34 PM
5:10 PM	5:12 PM	5:14 PM	5:17 PM	5:18 PM	5:19 PM	5:34 PM
6:10 PM	6:12 PM	6:14 PM	6:17 PM	6:18 PM	6:19 PM	6:34 PM
7:10 PM	7:12 PM	7:14 PM	7:17 PM	7:18 PM	7:19 PM	7:34 PM



# PACIFIC

RESEARCH CENTER

7333-7999 GATEWAY BOULEVARD, NEWARK, CA

## FOR LEASING INFORMATION CONTACT

### GREGG DOMANICO

415.215.5218

[gregg.domanico@cbre.com](mailto:gregg.domanico@cbre.com)

LIC N° 00996779

### MICHAEL DOMANICO

650.430-1464

[michael.domanico@cbre.com](mailto:michael.domanico@cbre.com)

LIC N° 01944774

### GIO HAUGHTON

650.387.1197

[gio.haughton@cbre.com](mailto:gio.haughton@cbre.com)

LIC N° 02107010

[PACIFICRESEARCHCENTER.COM](http://PACIFICRESEARCHCENTER.COM)

This information supplied herein is from sources we deem reliable. It is provided without any representation, warranty or guarantee, expressed or implied as to its accuracy. Prospective Buyer or Tenant should conduct an independent investigation and verification of all matters deemed to be material, including, but not limited to, statements of income and expenses. Consult your attorney, accountant, or other professional advisor.

A  BioMed Realty property

**CBRE**