



▼ MAYFAIR PLAZA ▲

RETAIL FOR LEASE

4830 N PULASKI RD, CHICAGO, IL 60630



CBRE

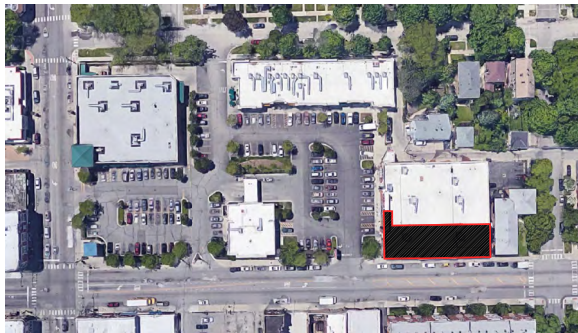
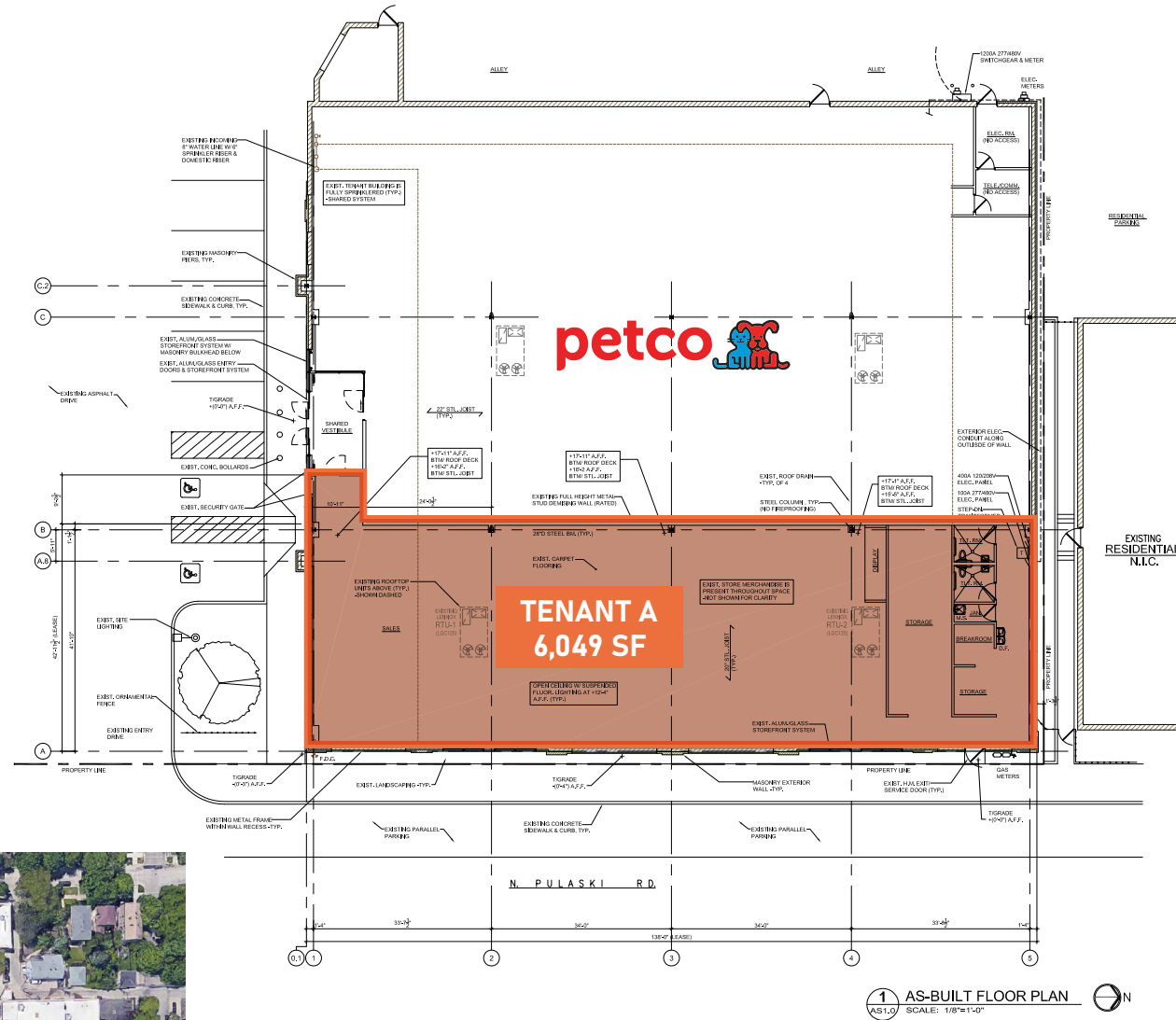
SITE HIGHLIGHTS

- NEW END CAP AVAILABLE FOR LEASE
- INCREDIBLE VISIBILITY AND SIGNAGE OPPORTUNITIES
- CENTER CO-TENANTS INCLUDE STARBUCKS, T-MOBILE, SARPINO'S, AND CHASE BANK
- DIRECT CO-TENANCY WITH PETCO, APPROX. ±6,000 SF (DIVISIBLE) WITH 135' OF FRONTAGE ON PULASKI RD.



SITE PLAN

OPTION A - ONE TENANT

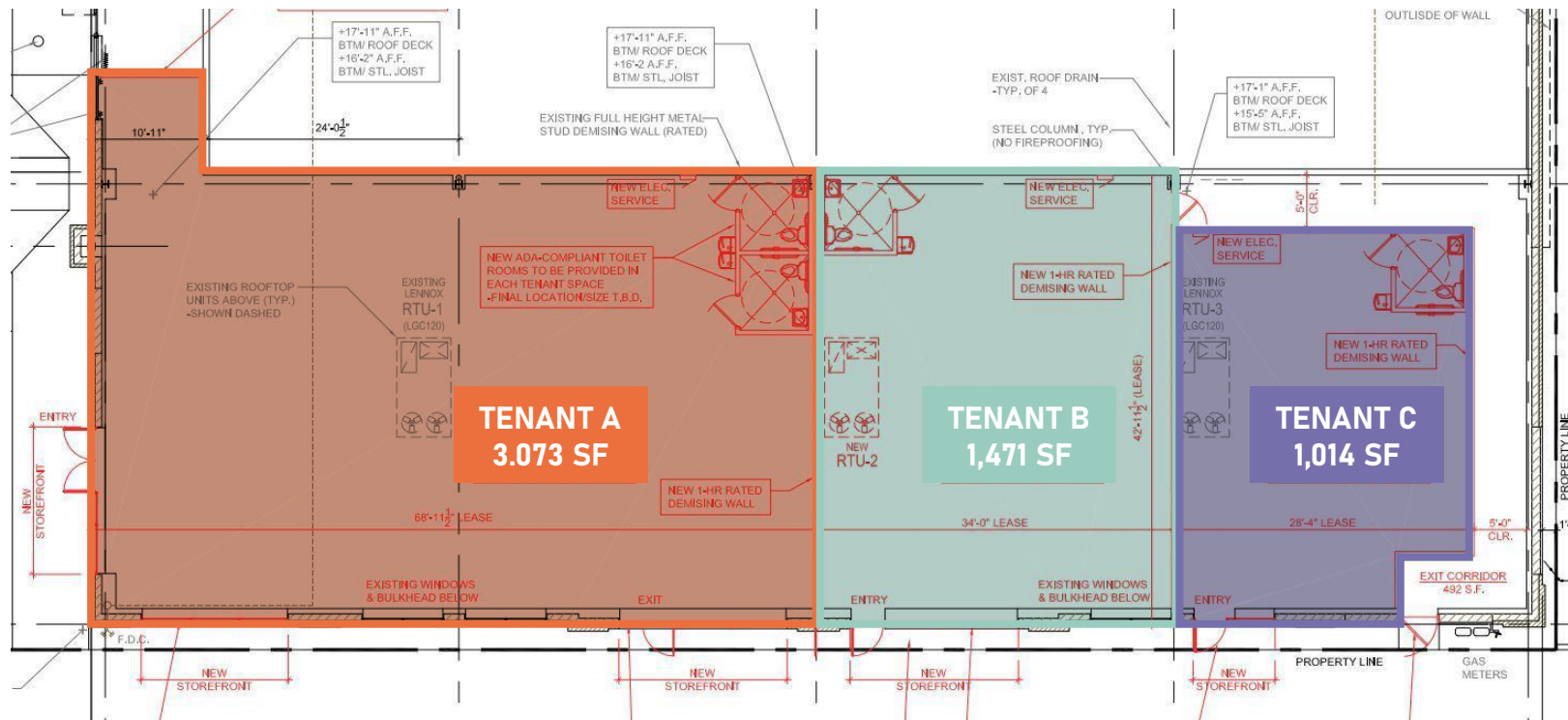


KEY PLAN 

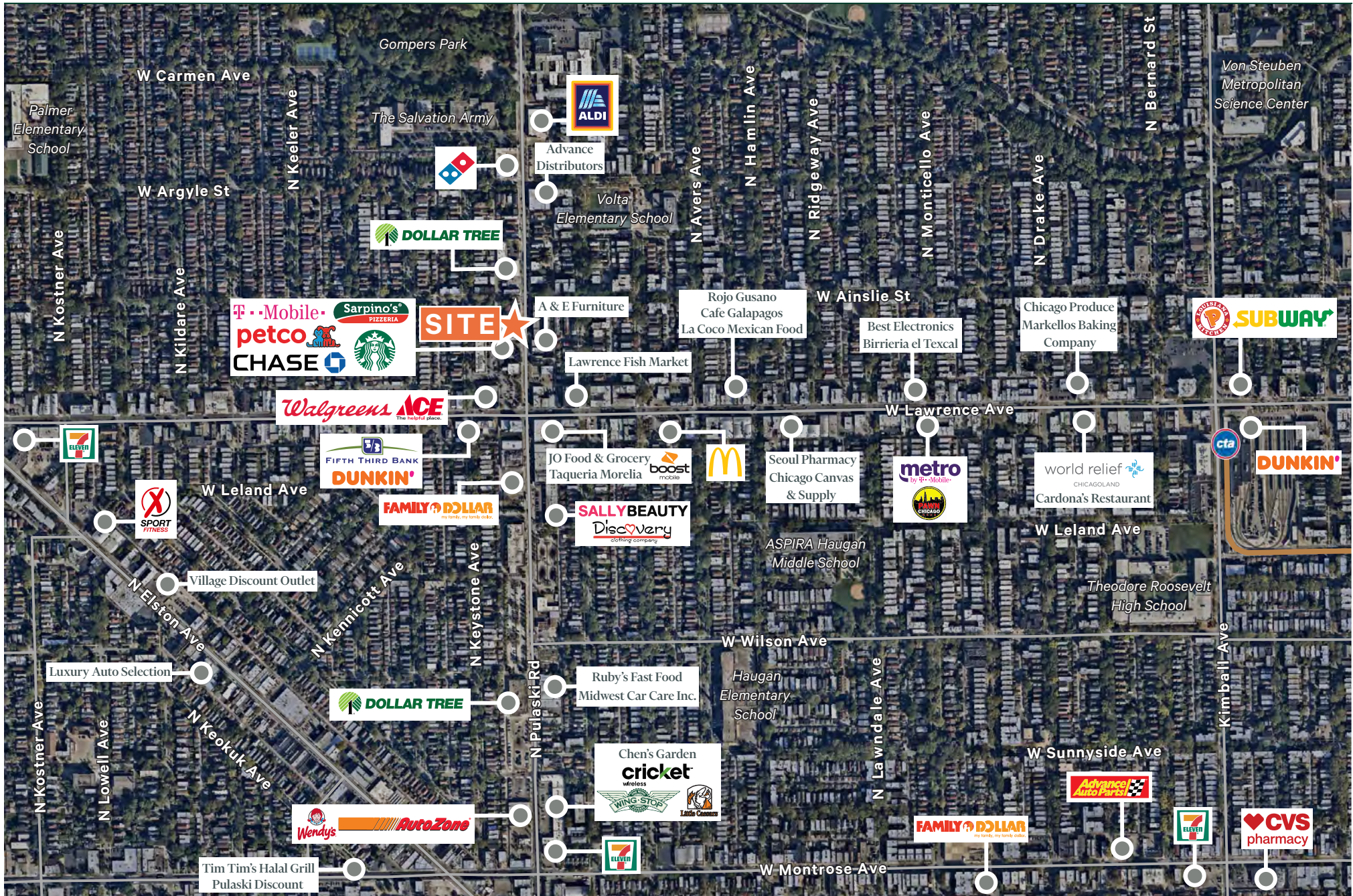
1 AS-BUILT FLOOR PLAN 
AS1.0 SCALE: 1/8"=1'-0"

SITE PLAN

OPTION C - THREE TENANT



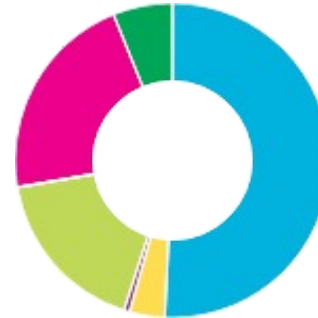
SURROUNDING AREA



DEMOGRAPHICS WITHIN 1 MILE

- STRONG POPULATION DENSITY
- DIVERSE POPULATION IMMEDIATELY SURROUNDING SITE

RACE & ETHNICITY



- White - 50.8%
- Black/African American - 3.6%
- American Indian - 0.6%
- Asian - 17.3%
- Native Hawaiian/Other Pacific Islander - 0.1%
- Other Race - 21.6%
- Two or More Races - 6.1%



52,622
POPULATION



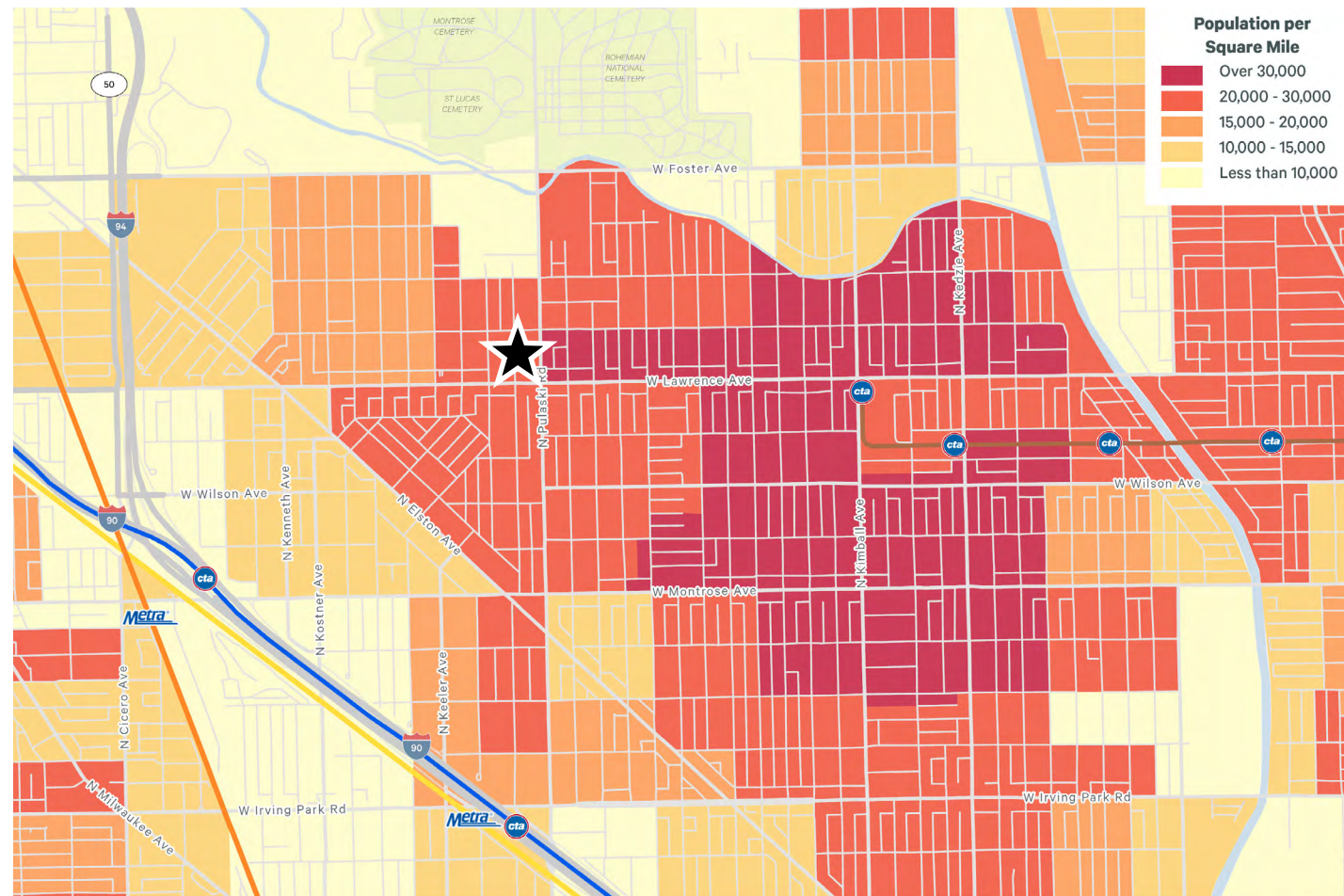
41,393
DAYTIME POP.



\$86,572
AVERAGE HH INCOME



17,524
OF HOUSEHOLDS





▼ MAYFAIR PLAZA ▲

FOR MORE INFORMATION PLEASE CONTACT:

MARY BRESNAHAN

VICE PRESIDENT

+1 312 935 1914

MARY.BRESNAHAN@CBRE.COM

CBRE

321 N. CLARK ST., SUITE 3400, CHICAGO, IL 60654

© 2022 CBRE, Inc. All rights reserved. This information has been obtained from sources believed reliable, but has not been verified for accuracy or completeness. You should conduct a careful, independent investigation of the property and verify all information. Any reliance on this information is solely at your own risk. CBRE and the CBRE logo are service marks of CBRE, Inc. All other marks displayed on this document are the property of their respective owners, and the use of such logos does not imply any affiliation with or endorsement of CBRE. Photos herein are the property of their respective owners. Use of these images without the express written consent of the owner is prohibited.

