

McAndrews Commons

13770 Frontier Court | Burnsville, MN 55337

2,991 SF Available



McAndrews Commons

13770 Frontier Court | Burnsville, MN 55337

For Sublease



Sublease Highlights

Total Building SF:

8,652 SF

Available Square Footage - Office:

1,376 SF - Suite #104

1,615 SF - Suite #110

2,991 SF - Total RSF

Year Built:

1998

Sublease Rate:

\$12.00/SF Gross

Lease Expiration:

8/31/24

Suite Features

- + Move in condition
- + Divisible suite
- + Furniture available
- + Easy access first floor entrance

Property Features

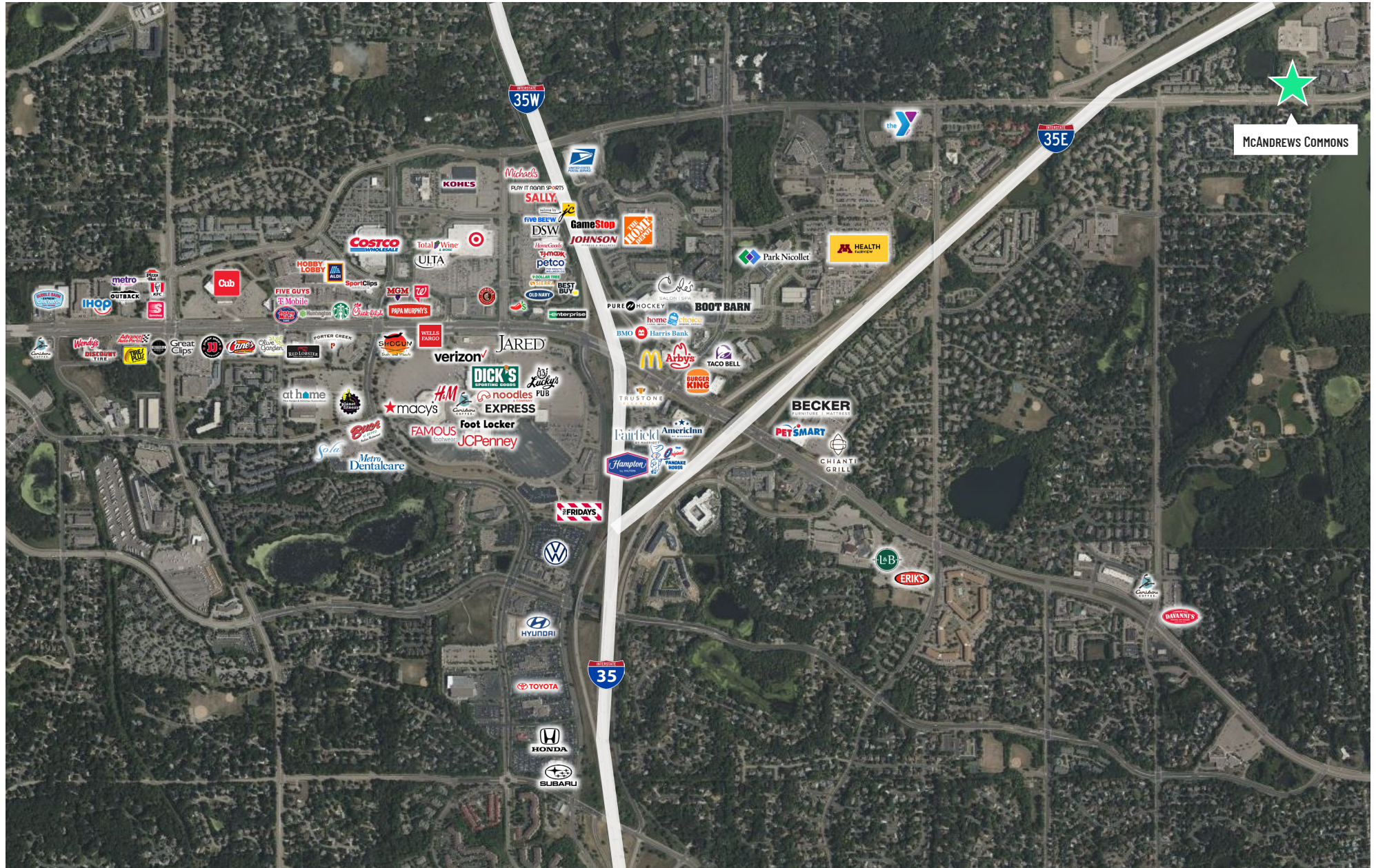
- + Close proximity to I-35E
- + Signage opportunities available
- + Local ownership/management
- + Landlord will offer longer term lease

McAndrews Commons

13770 Frontier Court | Burnsville, MN 55337

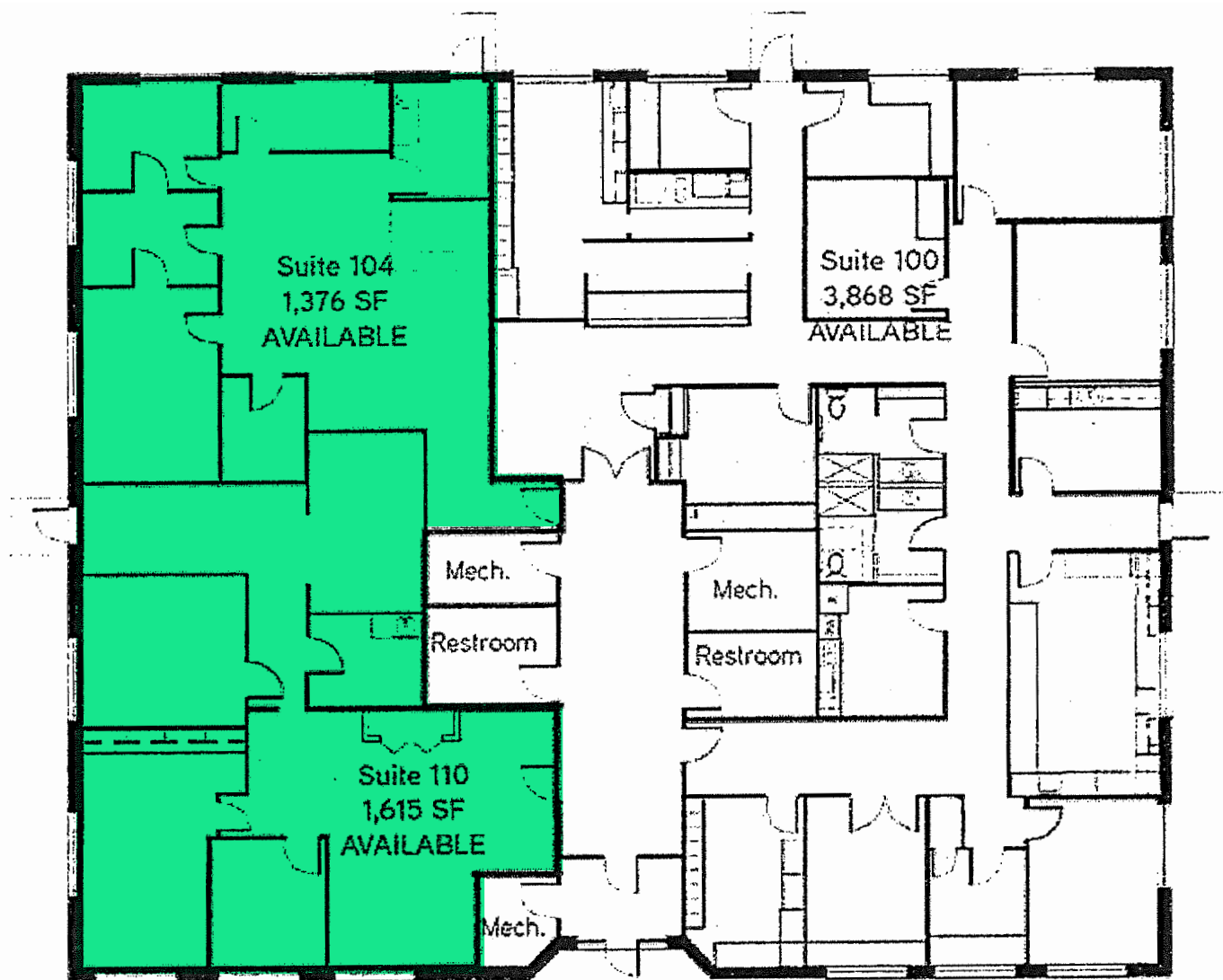
For Sublease

Neighboring Amenities



Floor Plan

2,991 RSF Available



Demographics



POPULATION

	1 MILE	3 MILES	5 MILES
2023 Population - Current Year Estimate	9,188	89,236	207,815
2028 Population - Five Year Projection	9,202	89,307	208,324
2020 Population - Census	9,112	87,902	205,447
2010 Population - Census	8,629	82,305	187,568
2020-2023 Annual Population Growth Rate	0.26%	0.46%	0.35%
2023-2028 Annual Population Growth Rate	0.03%	0.02%	0.05%



HOUSEHOLDS

2023 Households - Current Year Estimate	3,459	35,155	79,214
2028 Households - Five Year Projection	3,480	35,410	79,893
2010 Households - Census	3,359	32,715	71,481
2020 Households - Census	3,434 97.0%	34,655 96.7%	77,846 96.9%
2020-2023 Compound Annual Household Growth Rate	0.22%	0.44%	0.54%
2023-2028 Annual Household Growth Rate	0.12%	0.14%	0.17%
2023 Average Household Size	2.63	2.51	2.60



HOUSEHOLD INCOME

2023 Average Household Income	\$124,218	\$112,695	\$123,824
2028 Average Household Income	\$140,061	\$127,213	\$139,656
2023 Median Household Income	\$94,318	\$86,609	\$96,590
2028 Median Household Income	\$104,794	\$97,174	\$106,325
2023 Per Capita Income	\$46,178	\$44,279	\$47,069
2028 Per Capita Income	\$52,212	\$50,300	\$53,414



HOUSING UNITS

2023 Housing Units	3,557	36,305	81,675
2023 Vacant Housing Units	98 2.8%	1,150 3.2%	2,461 3.0%
2023 Occupied Housing Units	3,459 97.2%	35,155 96.8%	79,214 97.0%
2023 Owner Occupied Housing Units	2,811 79.0%	24,821 68.4%	60,065 73.5%
2023 Renter Occupied Housing Units	648 18.2%	10,334 28.5%	19,149 23.4%



EDUCATION

2023 Population 25 and Over	6,470	62,692	144,555
HS and Associates Degrees	3,350 51.8%	33,074 52.8%	73,073 50.6%
Bachelor's Degree or Higher	2,888 44.6%	26,321 42.0%	64,875 44.9%



PLACE OF WORK

2023 Businesses	132	3,197	5,661
2023 Employees	1,701	45,852	75,909



Contact Us

Jerry Driessen

First Vice President

+1 612 336 4310

gerald.driessen@cbre.com

© 2024 CBRE, Inc. All rights reserved. This information has been obtained from sources believed reliable, but has not been verified for accuracy or completeness. You should conduct a careful, independent investigation of the property and verify all information. Any reliance on this information is solely at your own risk. CBRE and the CBRE logo are service marks of CBRE, Inc. All other marks displayed on this document are the property of their respective owners, and the use of such logos does not imply any affiliation with or endorsement of CBRE. Photos herein are the property of their respective owners. Use of these images without the express written consent of the owner is prohibited.