

Retail Space Available

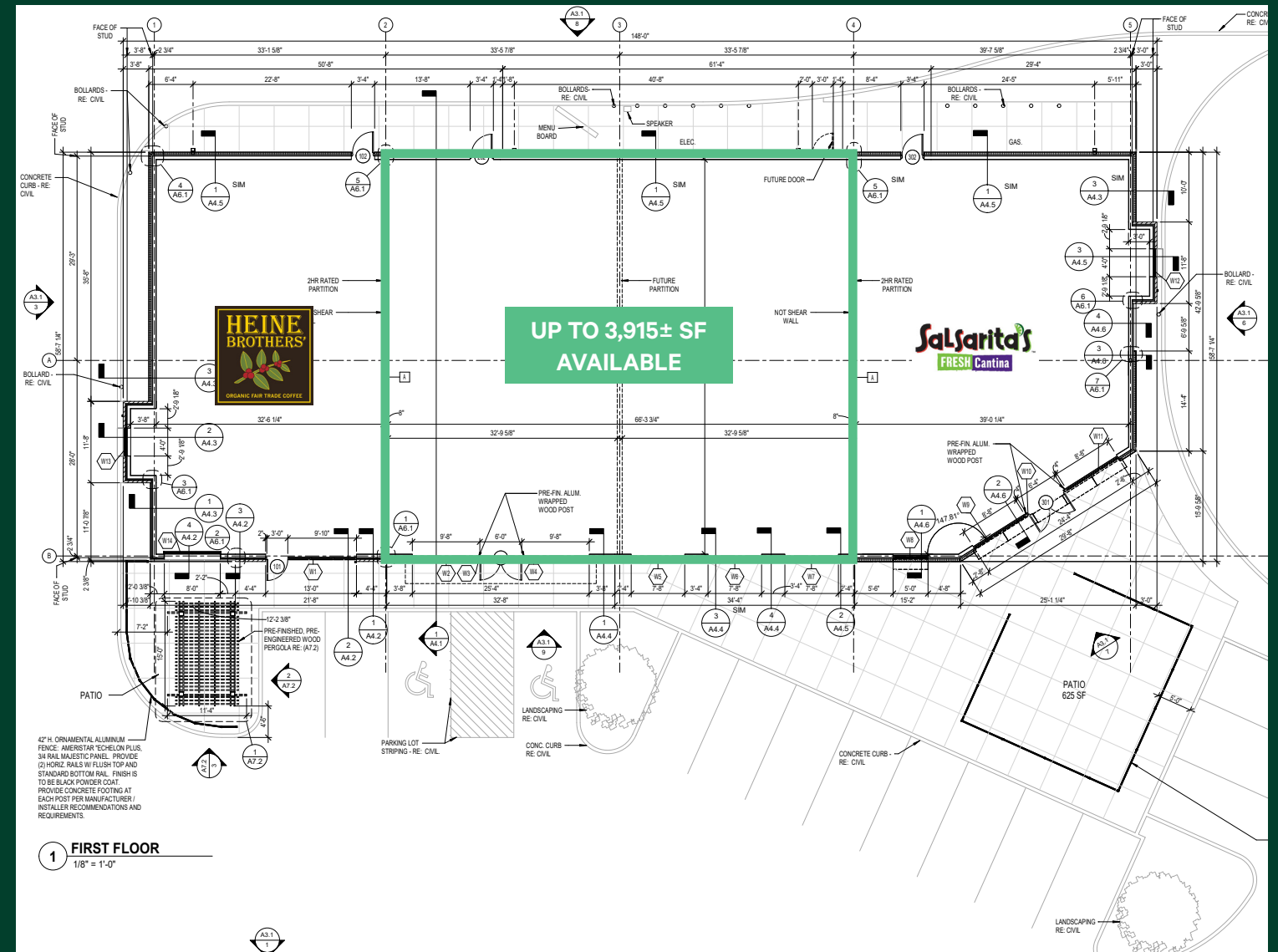
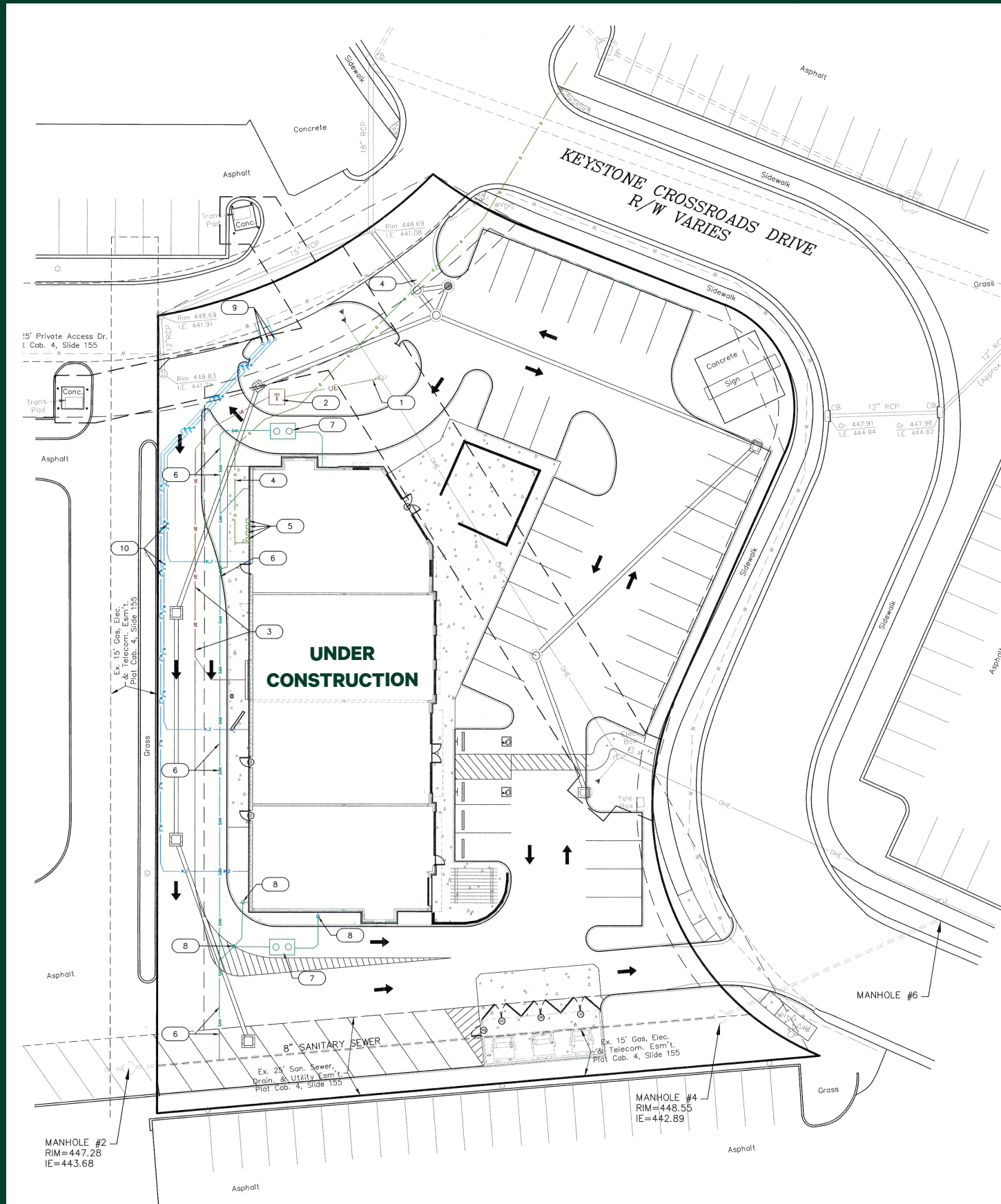
Under Construction

285 Keystone Crossroads Drive
Shepherdsville, KY 40165



Property Features

- + Up to 3,915± square feet available
- + Join co-tenants Heine Brothers Coffee and Salsaritas Fresh Cantina
- + Adjacent to Panera Bread, Burger King, Cattleman's Roadhouse, Panda Express, Starbucks Coffee, White Castle, Wendy's
- + Located at the Hwy 44 & Interstate 65 interchange in Shepherdsville near Kroger, Lowe's and Walmart
- + High growth area



Retail Space Available

285 Keystone Crossroads Drive | Shepherdsville, KY 40165

For Lease

	1 MILE	3 MILES	5 MILES	10 MILES
DAYTIME POPULATION				
2023 Daytime Population	7,330	20,863	31,282	104,482
Daytime Workers	5,098 69.5%	10,668 51.1%	14,999 47.9%	36,800 35.2%
Daytime Residents	2,232 30.5%	10,195 48.9%	16,283 52.1%	67,682 64.8%
POPULATION				
2023 Population - Current Year Estimate	4,403	19,001	30,606	133,879
2028 Population - Five Year Projection	4,561	19,610	31,376	136,291
2020 Population - Census	4,255	18,256	29,662	131,482
2010 Population - Census	3,416	16,072	26,932	119,965
2020-2023 Annual Population Growth Rate	1.06%	1.24%	0.97%	0.56%
2023-2028 Annual Population Growth Rate	0.71%	0.63%	0.50%	0.36%
HOUSEHOLDS				
2023 Households - Current Year Estimate	1,813	7,363	11,976	51,490
2028 Households - Five Year Projection	1,887	7,657	12,360	52,766
2010 Households - Census	1,402	5,941	10,147	45,161
2020 Households - Census	1,748 94.3%	7,059 96.2%	11,575 96.2%	50,286 95.6%
2020-2023 Compound Annual Household Growth Rate	1.13%	1.31%	1.05%	0.73%
2023-2028 Annual Household Growth Rate	0.80%	0.79%	0.63%	0.49%
2023 Average Household Size	2.41	2.58	2.55	2.59
HOUSEHOLD INCOME				
2023 Households	1,813	7,363	11,975	51,489
Under \$15,000	213 11.8%	874 11.9%	1,182 9.9%	3,869 7.5%
\$15,000-\$24,999	195 10.8%	751 10.2%	1,068 8.9%	3,788 7.4%
\$25,000-\$34,999	93 5.1%	416 5.7%	685 5.7%	3,824 7.4%
\$35,000-\$49,999	254 14.0%	1,151 15.6%	1,765 14.7%	6,982 13.6%
\$50,000-\$74,999	324 17.9%	1,511 20.5%	2,459 20.5%	10,506 20.4%
\$75,000-\$99,999	282 15.6%	1,123 15.3%	1,802 15.1%	8,083 15.7%
\$100,000-\$149,999	334 18.4%	1,096 14.9%	1,962 16.4%	9,403 18.3%
\$150,000-\$199,999	70 3.9%	255 3.5%	588 4.9%	3,085 6.0%
\$200,000 and Over	47 2.6%	187 2.5%	464 3.9%	1,950 3.8%
2023 Average Household Income	\$75,318	\$72,460	\$80,696	\$84,575
2028 Average Household Income	\$83,493	\$80,322	\$90,234	\$96,585
2023 Median Household Income	\$59,310	\$55,962	\$60,550	\$65,092
2028 Median Household Income	\$65,051	\$59,969	\$66,238	\$75,054
2023 Per Capita Income	\$30,443	\$27,957	\$31,154	\$32,579
2028 Per Capita Income	\$33,859	\$31,199	\$35,045	\$37,450

Contact Us

Clay Hunt

First Vice President
+1 502 412 7607
clay.hunt@cbre.com

Robert Schwartz

Senior Vice President
+1 502 412 7606
robert.schwartz@cbre.com

Bryan Schwartz

Associate
+1 502 412 7635
bryan.schwartz@cbre.com

© 2023 CBRE, Inc. All rights reserved. This information has been obtained from sources believed reliable but has not been verified for accuracy or completeness. CBRE, Inc. makes no guarantee, representation or warranty and accepts no responsibility or liability as to the accuracy, completeness, or reliability of the information contained herein. You should conduct a careful, independent investigation of the property and verify all information. Any reliance on this information is solely at your own risk.