

Medical Office | For Lease

CBRE

1902 N Capitol Avenue

San Jose, CA
www.cbre.com

Medical Office Space | ±1,490 SF




GREAT MALL[®]
A SIMON CENTER

BART


Valley
Transportation
Authority

N Capitol Ave



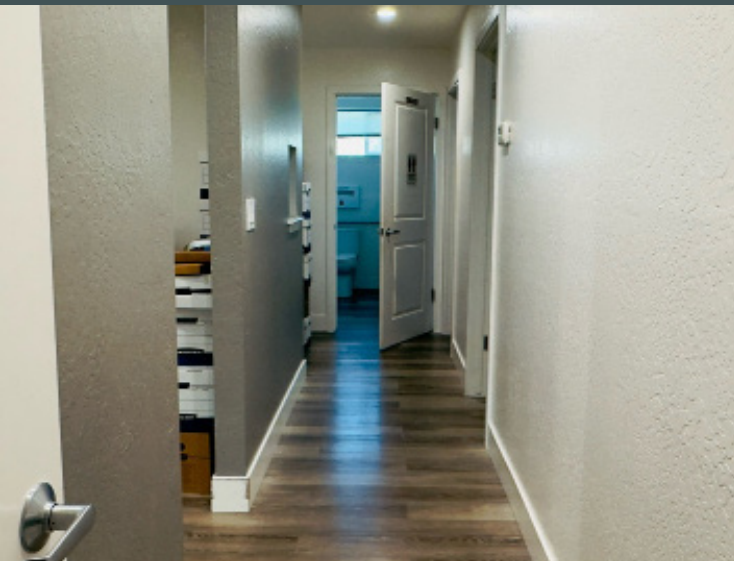
CLICK HERE
FOR VIRTUAL TOUR

Property Highlights:

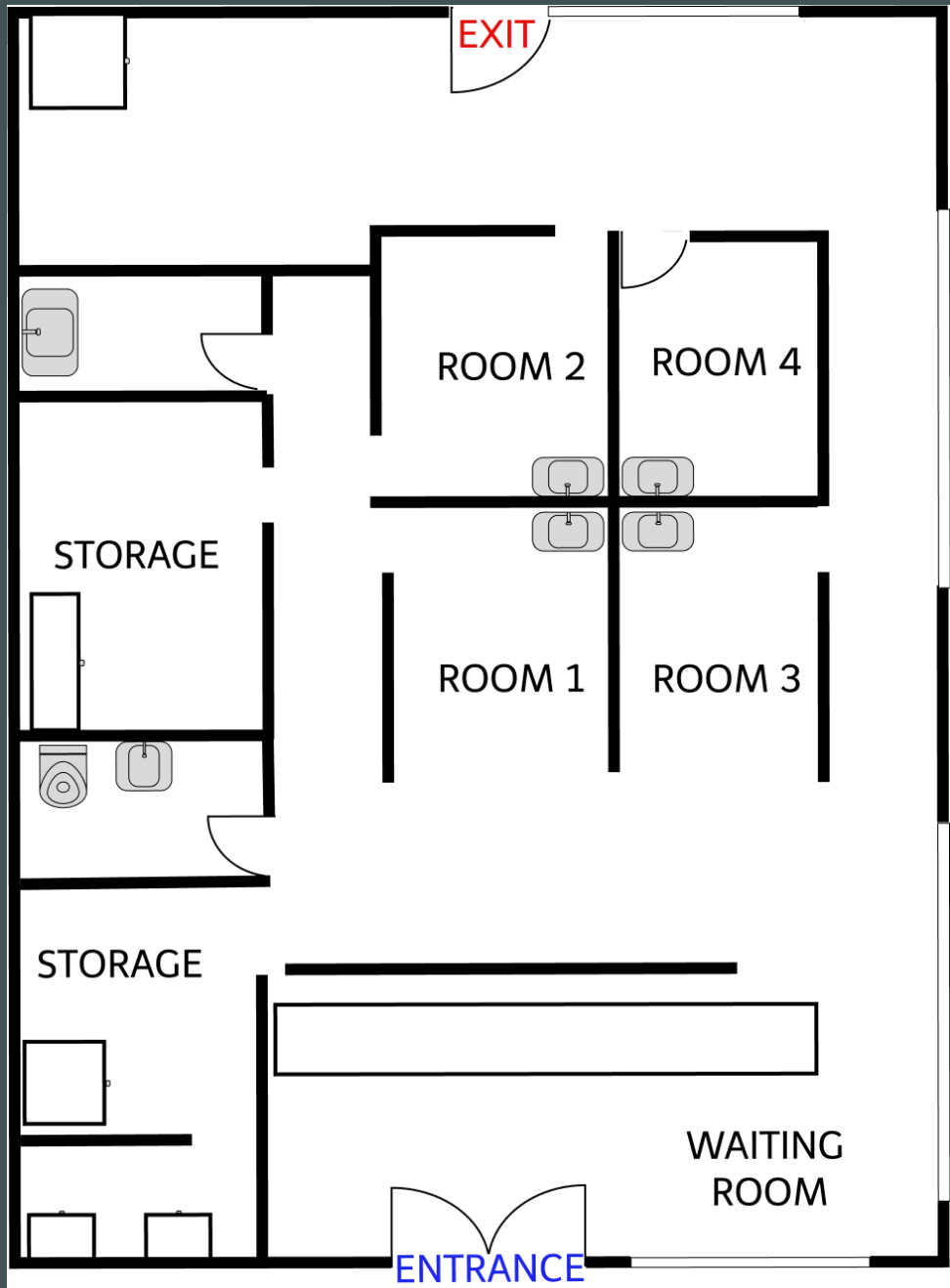
- + 1,490 SF Medical Office Space
- + Currently Built out as a Dental Office
- + 4 Operatories
 - A Reception/Admin
 - Monument Signage
- + 17 on-Site Parking Spaces
- + Excellent Location
 - Easy Access to Light Rail and New BART stations
- + Asking \$3.50/SF NNN



Internal Photos



Layout



Contact Us

Hai T. Dang

Senior Vice President
408 790 5433
hai.dang@cbre.com
Lic. 01404853

Thanh N. Dang

Associate
408 790 5402
thanh.dang1@cbre.com
Lic. 02073283

© 2024 CBRE, Inc. All rights reserved. This information has been obtained from sources believed reliable, but has not been verified for accuracy or completeness. You should conduct a careful, independent investigation of the property and verify all information. Any reliance on this information is solely at your own risk. CBRE and the CBRE logo are service marks of CBRE, Inc. All other marks displayed on this document are the property of their respective owners, and the use of such logos does not imply any affiliation with or endorsement of CBRE. Photos herein are the property of their respective owners. Use of these images without the express written consent of the owner is prohibited.