

Office For Sublease

CBRE

# Park Place on Turtle Creek

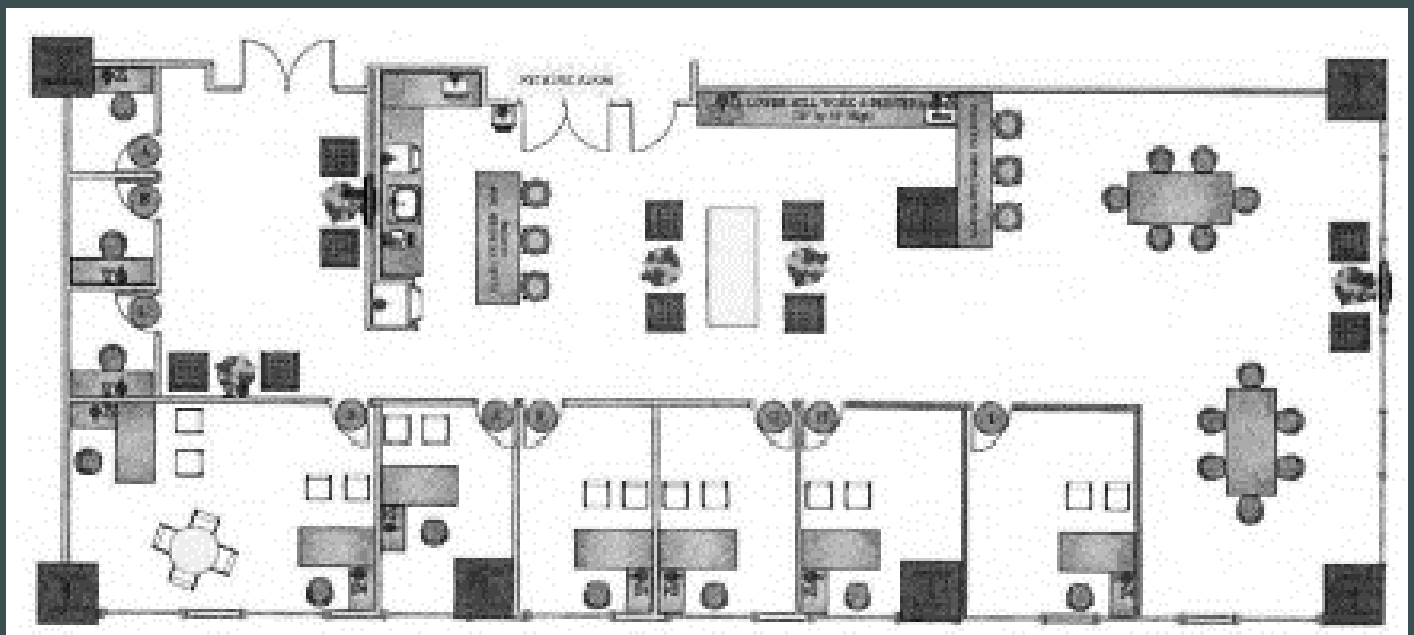
Available Immediately | 4,041 RSF

2911 Turtle Creek Blvd  
Dallas, TX 75219



# Plug & Play

- Suite 250 | 4,041 RSF
- Lease expires 9/30/2025
- Rental Rate: \$31.00 NNN
- Furniture Available



## Contact Us

Chris Sido  
Senior Vice President  
214 886 0824  
chris.sido@cbre.com

Chase Neyland  
First Vice President  
214 704 4045  
chase.neyland@cbre.com

© 2024 CBRE, Inc. All rights reserved. This information has been obtained from sources believed reliable but has not been verified for accuracy or completeness. CBRE, Inc. makes no guarantee, representation or warranty and accepts no responsibility or liability as to the accuracy, completeness, or reliability of the information contained herein. You should conduct a careful, independent investigation of the property and verify all information. Any reliance on this information is solely at your own risk. CBRE and the CBRE logo are service marks of CBRE, Inc. All other marks displayed on this document are the property of their respective owners, and the use of such marks does not imply any affiliation with or endorsement of CBRE. Photos herein are the property of their respective owners. Use of these images without the express written consent of the owner is prohibited.