

1700 N. WESTERN

Retail Space For Lease

STEPHEN ANSANI

T. 312.935.1907 E. Stephen.Ansani@cbre.com

CLIFFTON VANN

T. 312.233.8683 E. Clifton.Vann@cbre.com

CBRE

PROPERTY OVERVIEW

- 2,781 SF OF GROUND FLOOR RETAIL SPACE
- CONVENIENTLY LOCATED AT A SIGNALIZED INTERSECTION AND AT THE BASE OF A NEW CONSTRUCTION HIGH END 60 UNIT APARTMENT BUILDING.
- AVAILABLE IMMEDIATELY
- CEILING HEIGHTS - 17'3"
- BLACK IRON EQUIPPED
- OVER 71' OF FRONTAGE ALONG WESTERN AVENUE
- LOCATED IN CLOSE PROXIMITY TO THE WESTERN AVENUE BLUE LINE STOP – 1.7 MILLION ANNUAL ENTRIES

DEMOGRAPHICS

1-MILE RADIUS



DAYTIME POPULATION

48,207



AVERAGE HH INCOME

\$103,883



RESIDENTIAL POPULATION

69,321



EMPLOYEES

23,052

0.5-MILE RADIUS



DAYTIME POPULATION

14,954



AVERAGE HH INCOME

\$115,483



RESIDENTIAL POPULATION

19,520



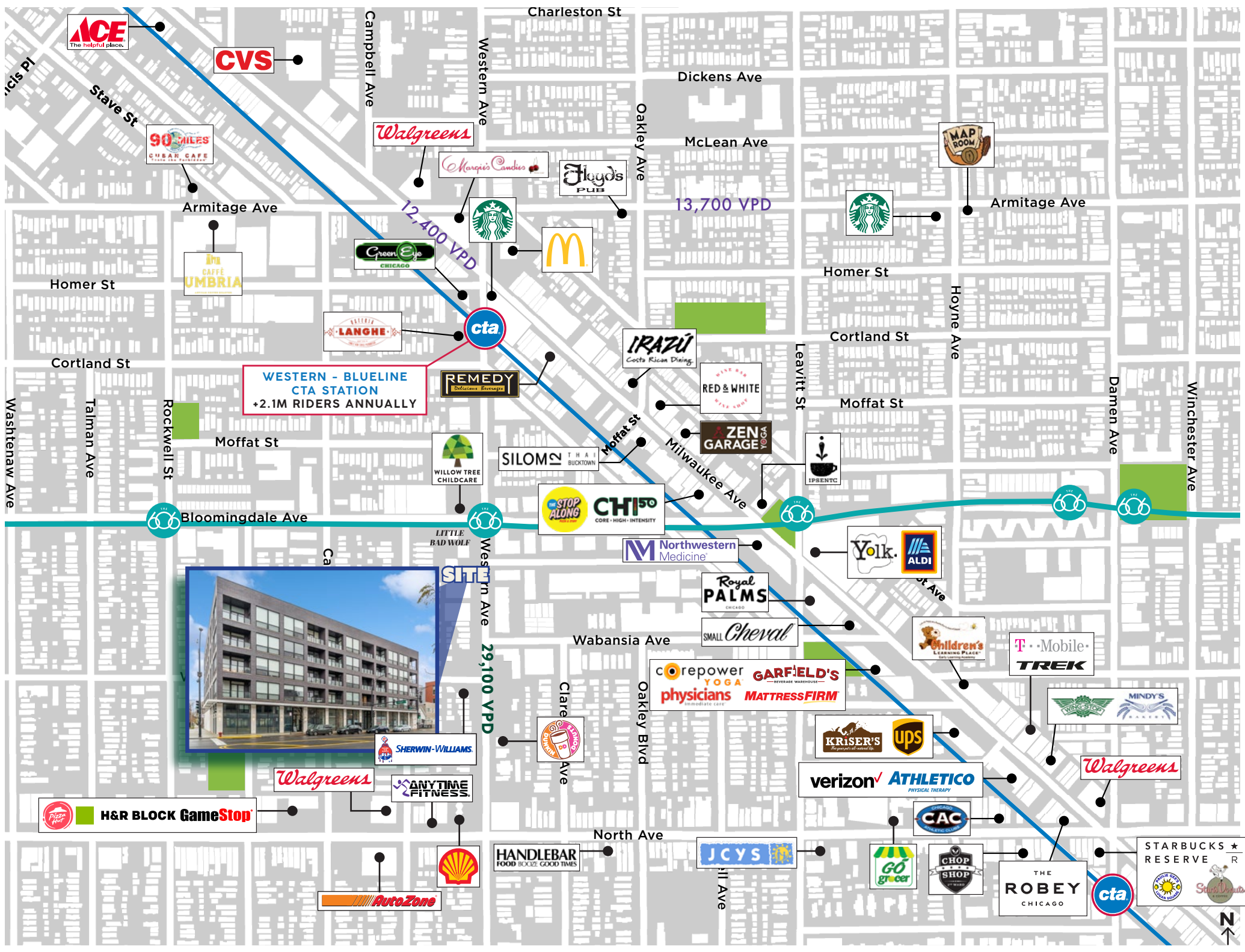
EMPLOYEES

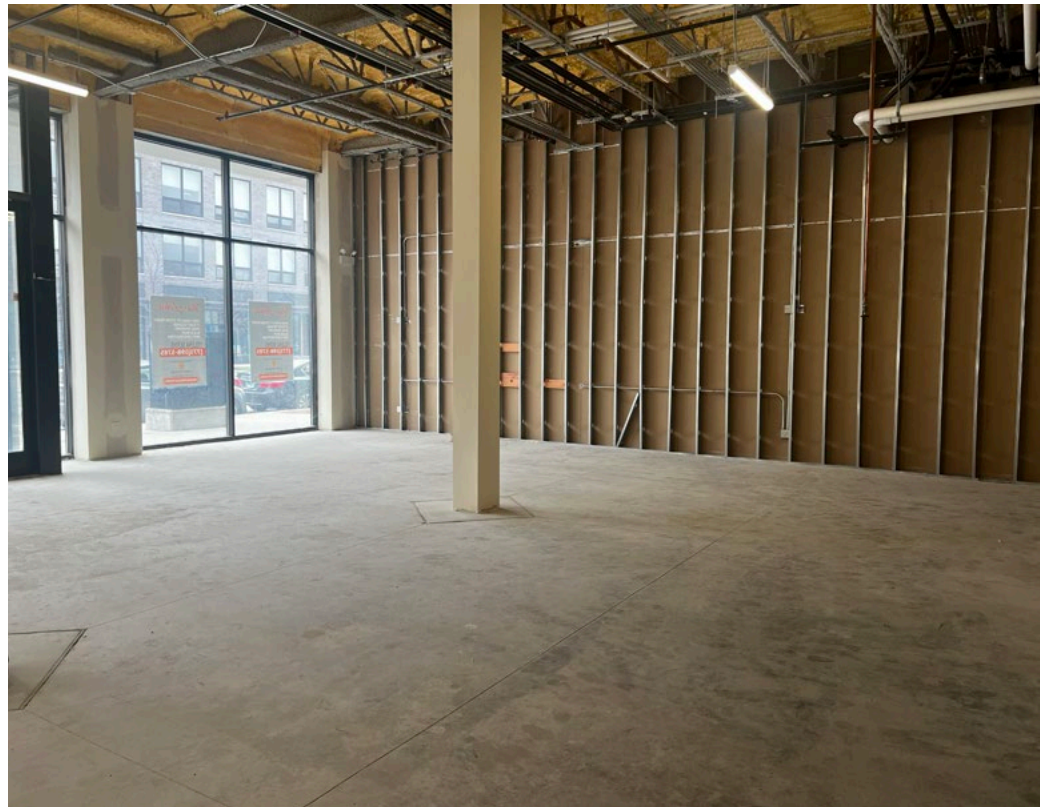
7,463

FIRST LEVEL

RETAIL A







1700 N. WESTERN

Retail Space For Lease

STEPHEN ANSANI

312.935.19017

Stephen.Ansani@cbre.com

CLIFFTON VANN

312.233.8683

Cliffton.Vann@cbre.com

CBRE

© 2024 CBRE, Inc. All rights reserved. This information has been obtained from sources believed reliable, but has not been verified for accuracy or completeness. Any projections, opinions, or estimates are subject to uncertainty. The information may not represent the current or future performance of the property. You and your advisors should conduct a careful, independent investigation of the property and verify all information. Any reliance on this information is solely at your own risk. CBRE and the CBRE logo are service marks of CBRE, Inc. and/or its affiliated or related companies in the United States and other countries. All other marks displayed on this document are the property of their respective owners. Photos herein are the property of their respective owners and use of these images without the express written consent of the owner is prohibited.