

Land | For Lease

CBRE

Pacific Hills Retail Land

±0.85 AC Build-to-Suit

120th & Pacific Street
Omaha, Nebraska 68154
www.cbre.com/nebraska



Pacific Hills Retail Land

120th & Pacific Street | Omaha, Nebraska 68154

For Lease



Property Information

Land Size

±0.85 AC

Lease Rate

Negotiable

Features

- + Conveniently located at the northwest corner of 120th & Pacific and less than a mile from I-680 and West Dodge Road
- + Close to shopping, restaurants and other amenities
- + 120th & Pacific traffic count: 49,650 VPD

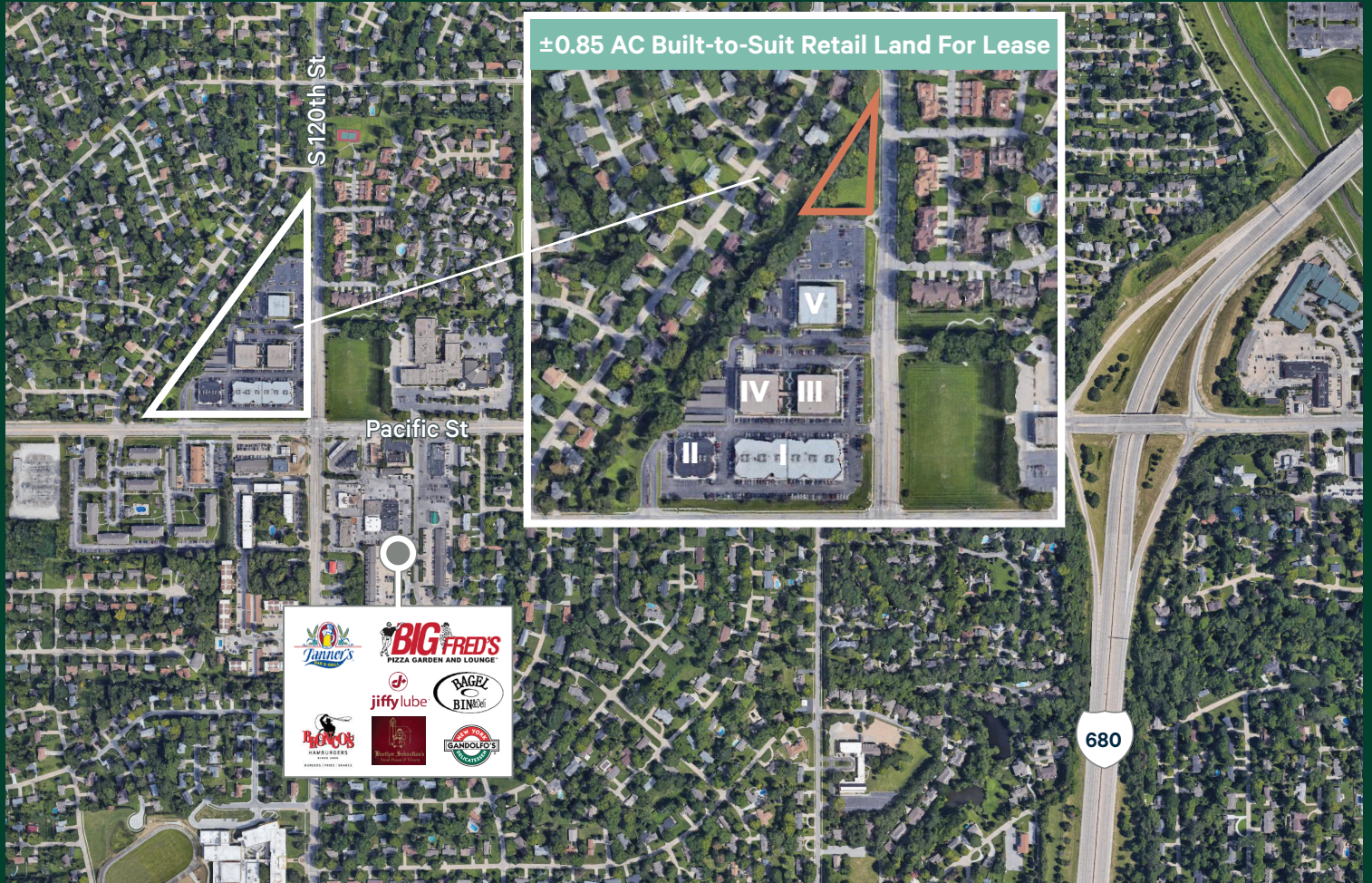
Site Plan - Option 1



Site Plan - Option 2



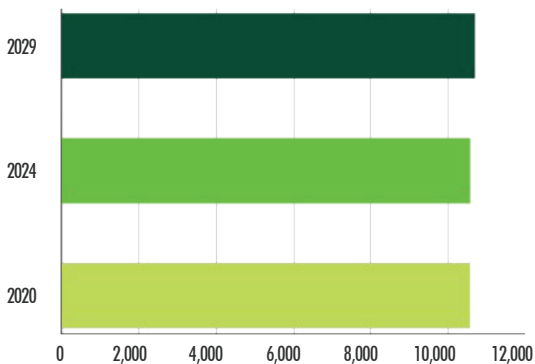
Pacific Hills Office Park



S 120TH ST & PACIFIC ST 1 MILE

POPULATION

POPULATION BY YEAR



HOME OWNERSHIP

69.5%
OWNER-OCCUPIED UNITS

EDUCATION



- Master's/Professional/Doctorate - 17.1%
- Bachelor's - 33.0%
- Other - 50.0%

EMPLOYMENT

6,718 EMPLOYEES

619 BUSINESSES

2.0% RESIDENTIAL UNEMPLOYMENT RATE

INCOME

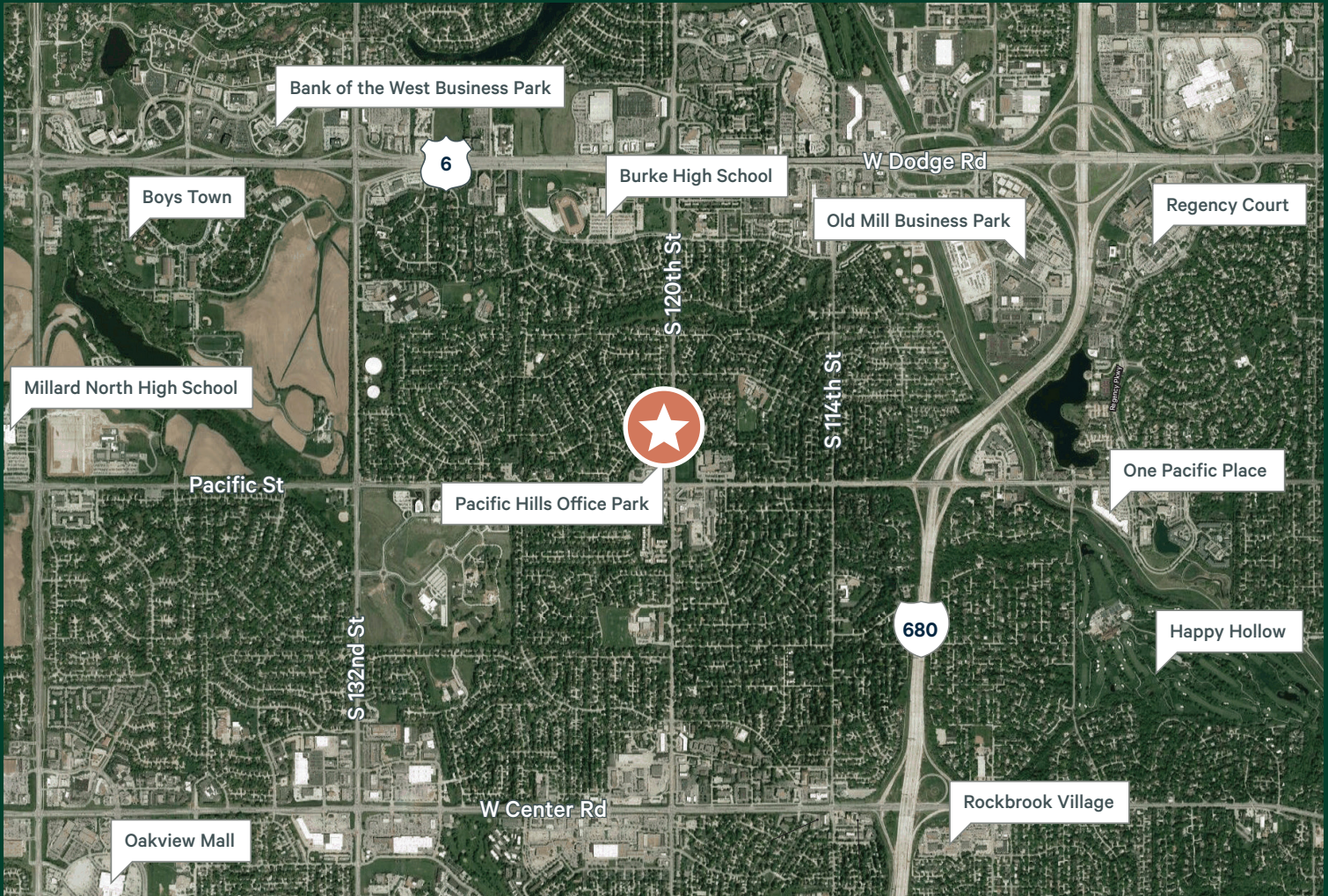
\$90,898
MEDIAN HOUSEHOLD INCOME

\$57,969
PER CAPITA INCOME

Pacific Hills Retail Land

120th & Pacific Street | Omaha, Nebraska 68154

For Lease



Contact Us

Nicholas Weideman

Vice President

+1 402 697 5851

nick.weideman@cbre.com

© 2025 CBRE, Inc. All rights reserved. This information has been obtained from sources believed reliable but has not been verified for accuracy or completeness. CBRE, Inc. makes no guarantee, representation or warranty and accepts no responsibility or liability as to the accuracy, completeness, or reliability of the information contained herein. You should conduct a careful, independent investigation of the property and verify all information. Any reliance on this information is solely at your own risk. CBRE and the CBRE logo are service marks of CBRE, Inc. All other marks displayed on this document are the property of their respective owners, and the use of such marks does not imply any affiliation with or endorsement of CBRE. Photos herein are the property of their respective owners. Use of these images without the express written consent of the owner is prohibited. rev082525m

