

# 1801

CALIFORNIA

SUITE 2500  
26,723 SF

**FOR LEASING INQUIRIES,  
PLEASE CONTACT:**

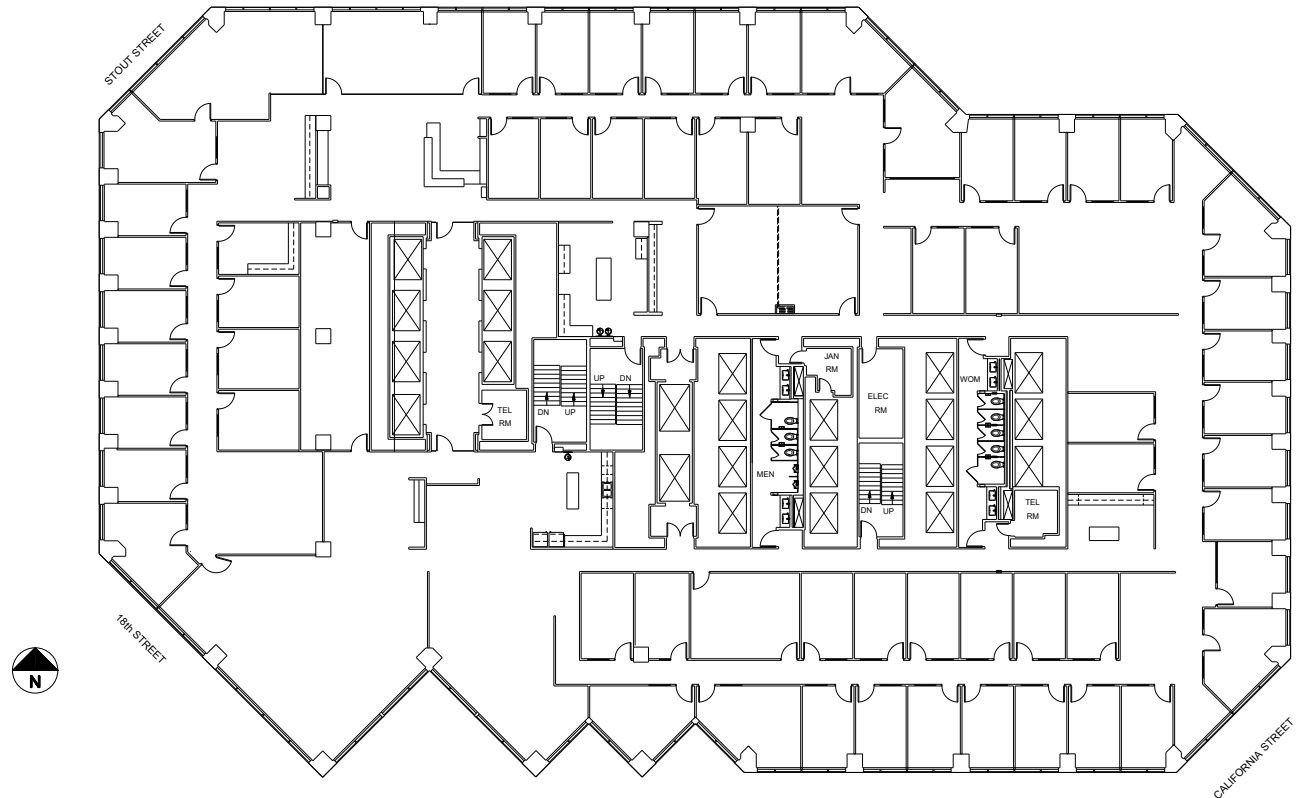
**Sarajane Goodfellow**  
sarajane.goodfellow@cbre.com  
303.628.7414

**Chris Phenicie**  
chris.phenicie@cbre.com  
303.638.1619

**Katie Rhodus**  
katie.rhodus@cbre.com  
303.264.1920

**Brookfield**  
Properties

**CBRE**



**LAYOUT:**

- Conference Rooms: 2
- Perimeter Offices: 37
- Interior Offices: 21
- Huddle Rooms: 3

© 2024 CBRE, Inc. All rights reserved. This information has been obtained from sources believed reliable, but has not been verified for accuracy or completeness. You should conduct a careful, independent investigation of the property and verify all information. Any reliance on this information is solely at your own risk. CBRE and the CBRE logo are service marks of CBRE, Inc. All other marks displayed on this document are the property of their respective owners, and the use of such logos does not imply any affiliation with or endorsement of CBRE. Photos herein are the property of their respective owners. Use of these images without the express written consent of the owner is prohibited.