

RETAIL | THE GLOVER HOUSE | NEW TO MARKET



PROPERTY HIGHLIGHTS

**RETAIL SPACE
AVAILABLE**

SUITE #200: 2,494 SF

**GLOVER PARK
2101 WISCONSIN AVE NW
WASHINGTON, DC 20007**

AVAILABLE: Immediately

DETAILS

- Steps from the National Cathedral and Observatory Circle, in close proximity to Georgetown University and Georgetown Hospital
- Surrounded by national grocers, including Whole Foods, Safeway, and Trader Joe's, along with national and local retailers
- Underserved sub market with great demographics

RETAIL LEASING

KELLY SILVERMAN
+1 240 793 6821
kelly.silverman@cbre.com

GARY TAUBIN
+1 240 447 9707
Gary.Taubin@cbre.com

CBRE

DEMOGRAPHICS

.25 | .5 | 1 | MILE RADIUS

POPULATION

1,925 | 6,300 | 33,949

EDUCATION DEGREE+

92.4% | 91.2% | 91.1%

DAYTIME POPULATION

3,908 | 9,500 | 44,800

AHH INCOME

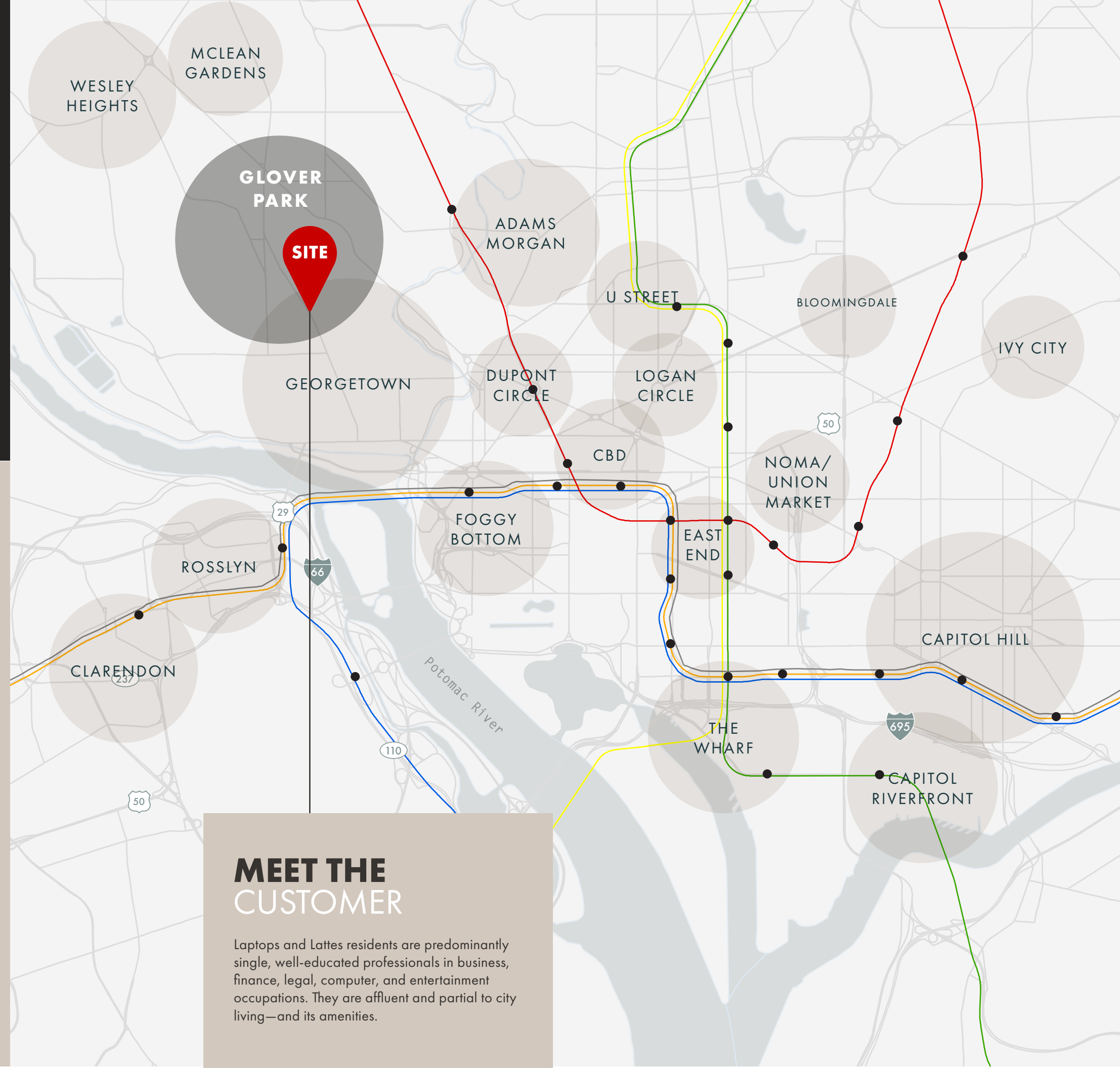
\$242,997 | \$291,181 | \$222,889

EMPLOYEES

2,952 | 5,644 | 25,582

AGE

34.8 | 33.9 | 32.9



MEET THE CUSTOMER

Laptops and Lattes residents are predominantly single, well-educated professionals in business, finance, legal, computer, and entertainment occupations. They are affluent and partial to city living—and its amenities.



SAFEWAY

TRADER JOE'S

Orangetheory FITNESS

Corepower YOGA

WHOLE FOODS MARKET

STCX

drybar

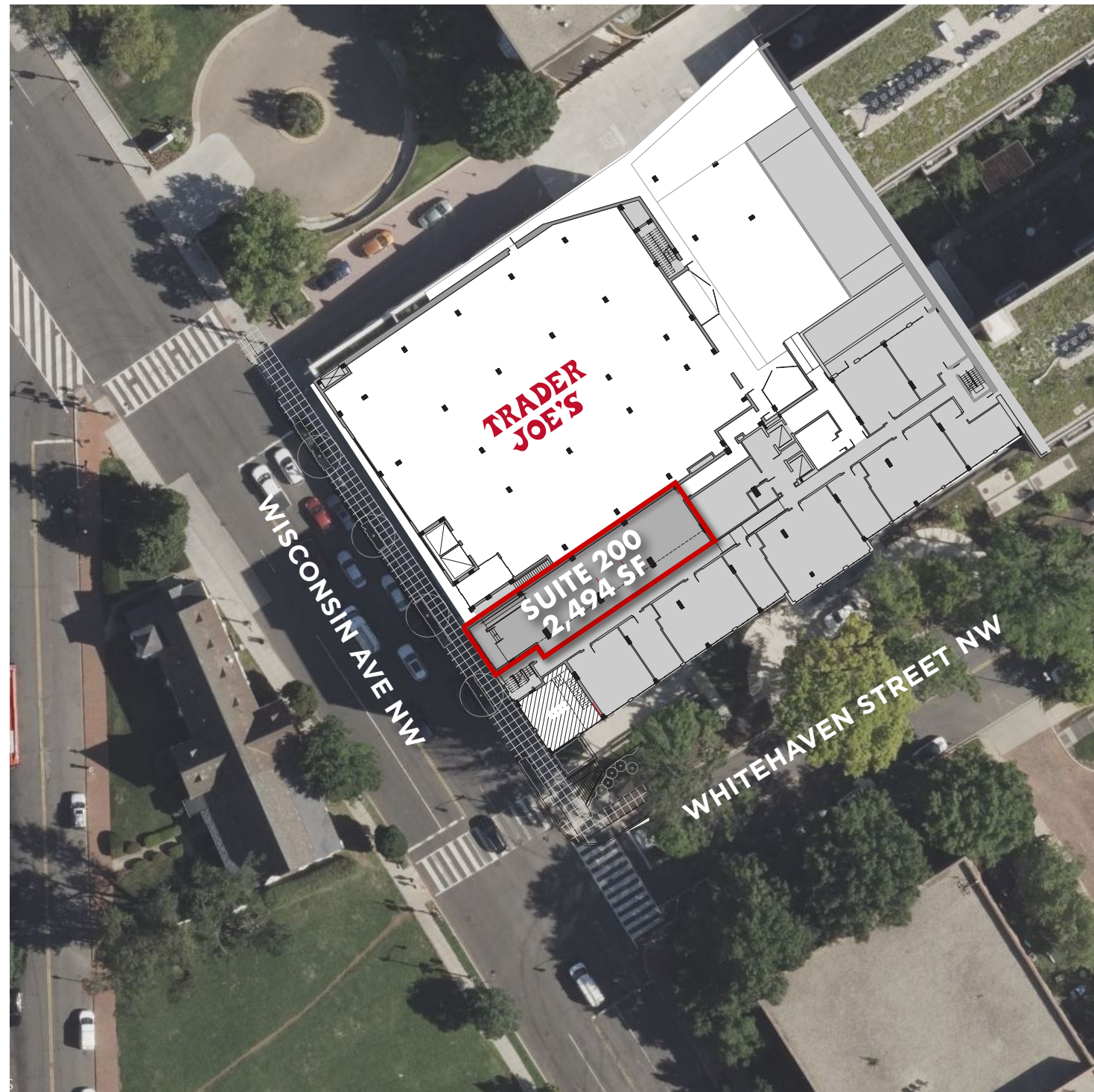
FRESH Baguette

The **Glover Park** Neighborhood

Glover Park boasts a robust, grocery-centric market featuring Whole Foods, Trader Joe's, and Safeway, all conveniently situated within a quarter-mile radius along Wisconsin Avenue. This segment of Wisconsin Avenue is home to local services, boutique and comprehensive fitness facilities, along with dining and entertainment establishments that cater to the local residential community, which has an average annual household income exceeding \$222,889. While the retail on Wisconsin primarily serves the local community, it also attracts a larger daytime population due to nearby offices, MedStar Georgetown Hospital, and Georgetown University, averaging over 600,000 daily within a three-mile radius.

SUITE #200

AVAILABLE: 2,494 SF



THE GLOVER HOUSE
2101 WISCONSIN AVE, WASHINGTON, D.C.

RETAIL LEASING

Kelly Silverman

+1 240 793 6821

kelly.silverman@cbre.com

Gary Taubin

+1 240 447 9707

gary.taubin@cbre.com

CBRE