

1,232 SF OFFICE SPACE AVAILABLE IN SIMMONS BANK BRANCH

17263 WILD HORSE CREEK RD, CHESTERFIELD, MO 63005



PROPERTY INFO

- + Suite 203: 1,232 Sq. Ft.
- + Surface Parking
- + Dedicated Entrance
- + Located on the highly trafficked Wild Horse Creek Rd with 21,763+ VPD and Kehrs Mill with 11,030 VPD just west of the site.
- + Dense surrounding demographics
- + Excellent pylon signage on Wild Horse Creek Rd



CONTACT BROKER FOR PRICING

CHARLIE FARON

Senior Associate
+1 314 655 5922
charlie.faron@cbre.com

KORI GIBBONS

Associate
+1 314 655 6034
kari.gibbons@cbre.com

NICK GARAVAGLIA

First Vice President
+1 314 655 5827
nick.garavaglia@cbre.com



DAYTIME POPULATION

8,264 - 1 mile
35,746 - 3 miles
95,347 - 5 miles



AVG. HOUSEHOLD INCOME

\$296,017 - 1 mile
\$232,896 - 3 miles
\$199,972 - 5 miles



MEDIAN HOUSEHOLD INCOME

\$200,001 - 1 mile
\$161,311 - 3 miles
\$139,596 - 5 miles



POPULATION

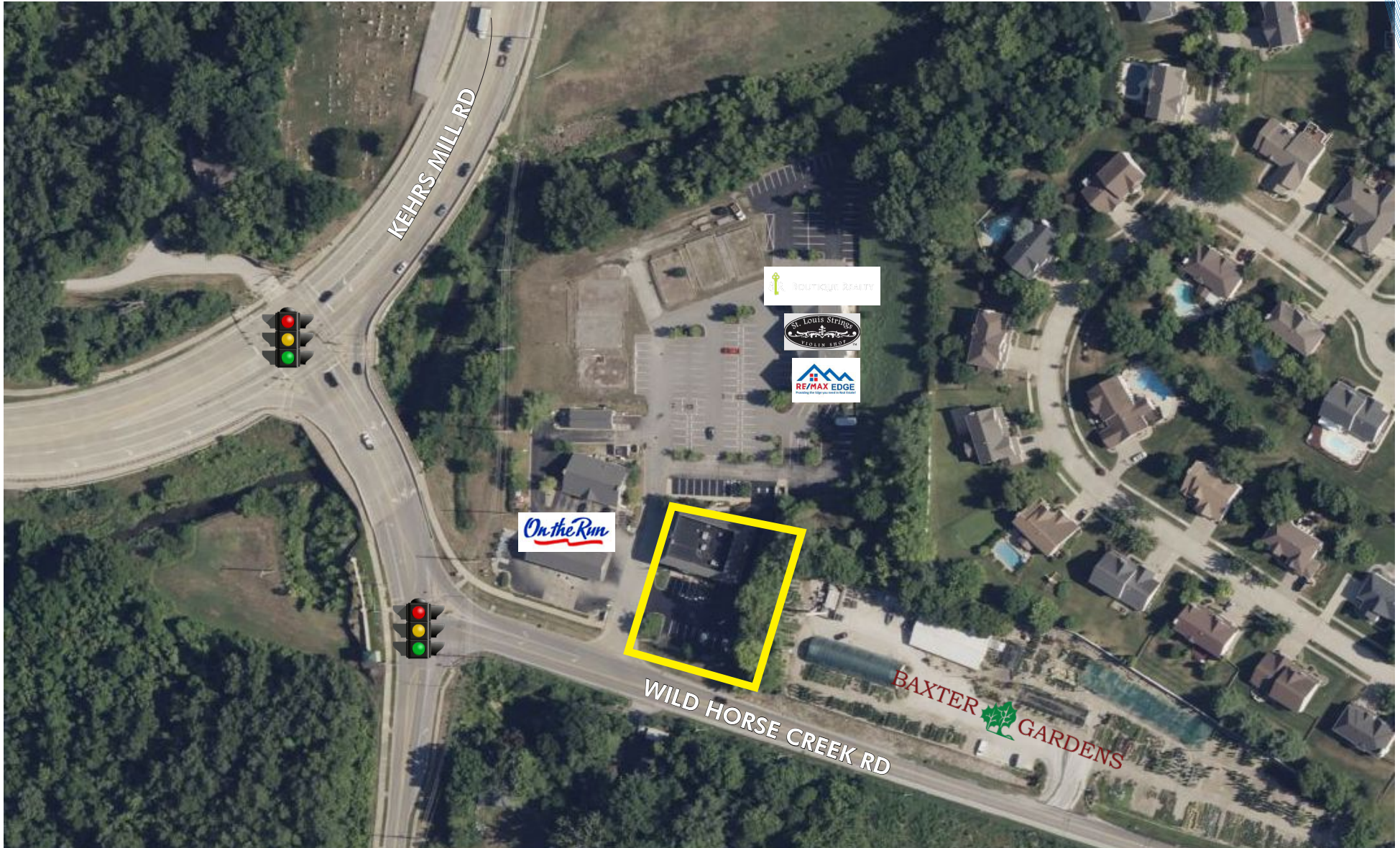
2,572 - 1 mile
19,825 - 3 miles
80,669 - 5 miles



HOUSEHOLDS

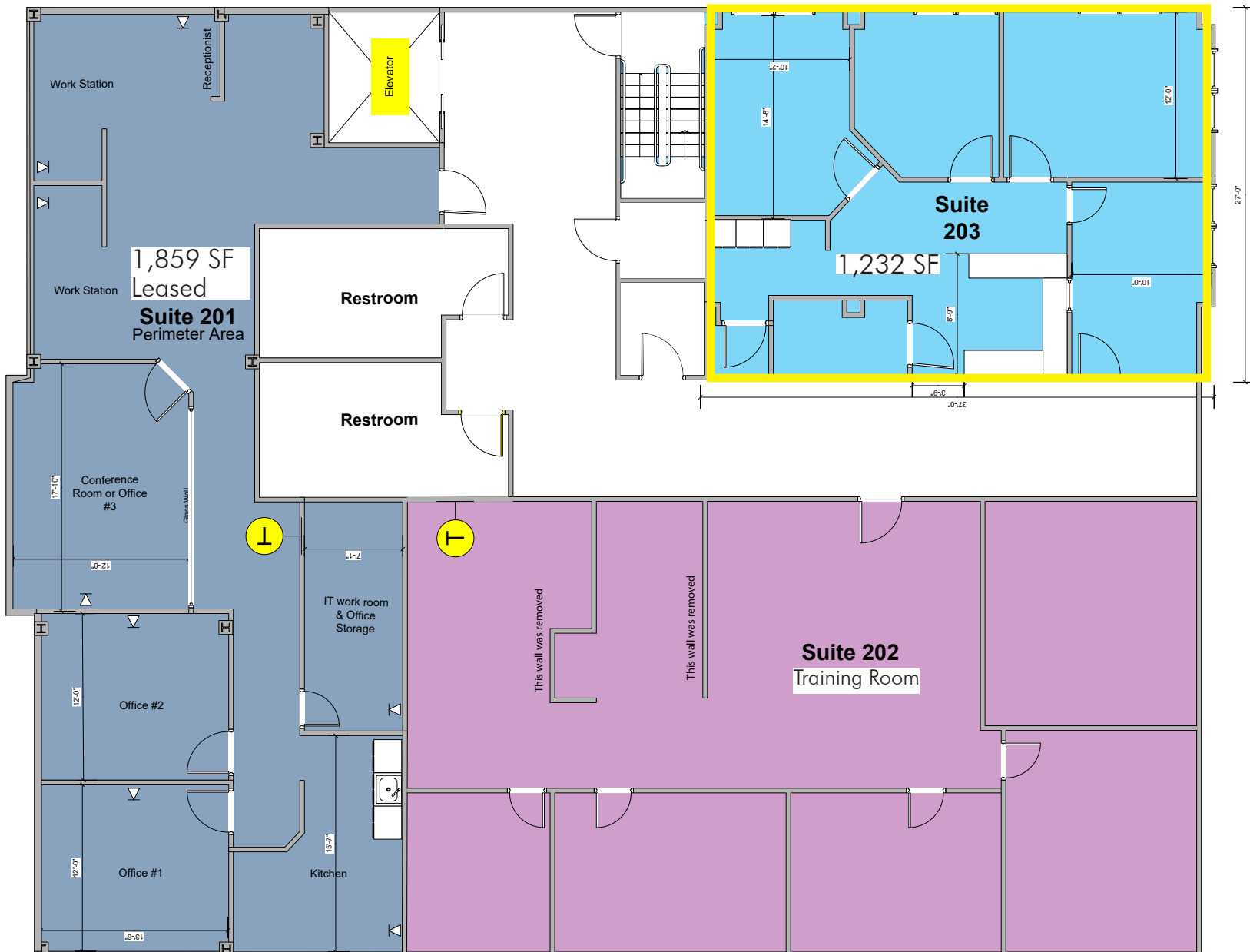
837 - 1 mile
7,517 - 3 miles
30,653 - 5 miles

SITE AERIAL



© 2024 CBRE, Inc. All rights reserved. This information has been obtained from sources believed reliable, but has not been verified for accuracy or completeness. You should conduct a careful, independent investigation of the property and verify all information. Any reliance on this information is solely at your own risk. CBRE and the CBRE logo are service marks of CBRE, Inc. All other marks displayed on this document are the property of their respective owners, and the use of such logos does not imply any affiliation with or endorsement of CBRE. Photos herein are the property of their respective owners. Use of these images without the express written consent of the owner is prohibited.

FLOORPLAN (1,232 SQ. FT. TOTAL)



TRADE AERIAL

