

# 6935 ARLINGTON ROAD

TOP TWO FLOORS AVAILABLE  
IN RECENTLY-RENOVATED BOUTIQUE OFFICE BUILDING

6935 Arlington Road  
Bethesda, Maryland 20814  
[www.cbre.com/bethesda](http://www.cbre.com/bethesda)



For Lease

Available Space

8,477 - 16,975 SF

Parking Ratio

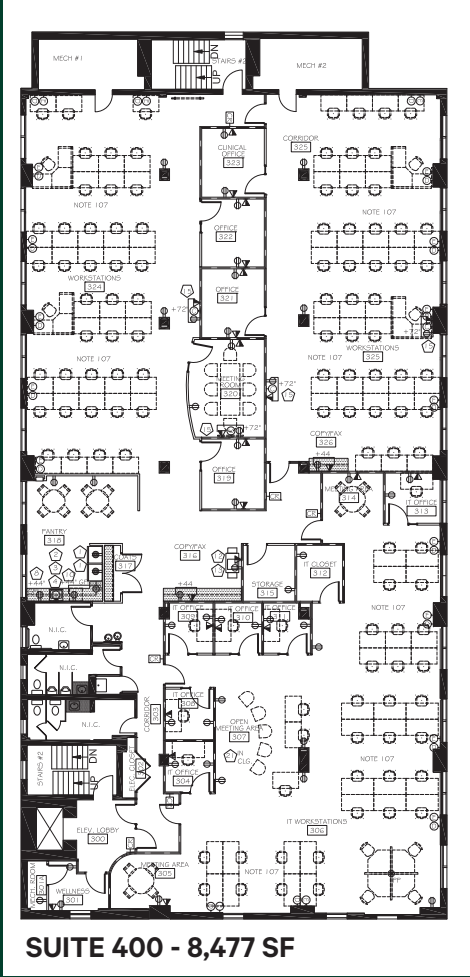
3.2/1,000

## BUILDING HIGHLIGHTS

- + Garage Parking Available
- + Owner Occupied Building
- + Direct access to Capital Crescent Trail
- + One Block from Bethesda Row Amenities



# 3RD FLOOR

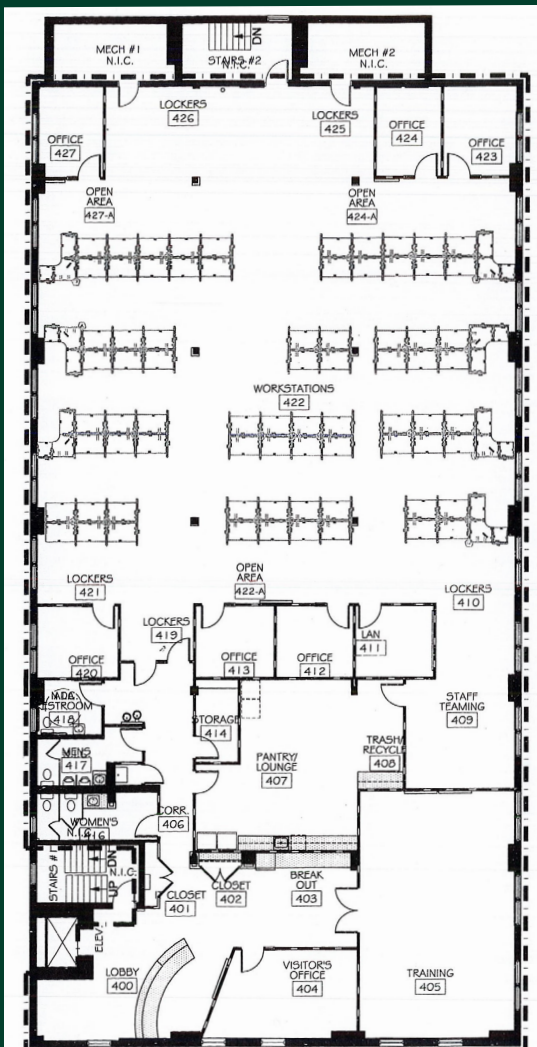


## 3RD FLOOR VIRTUAL TOUR



SUITE 400 - 8,477 SF

# 4TH FLOOR



SUITE 500 - 8,498 SF

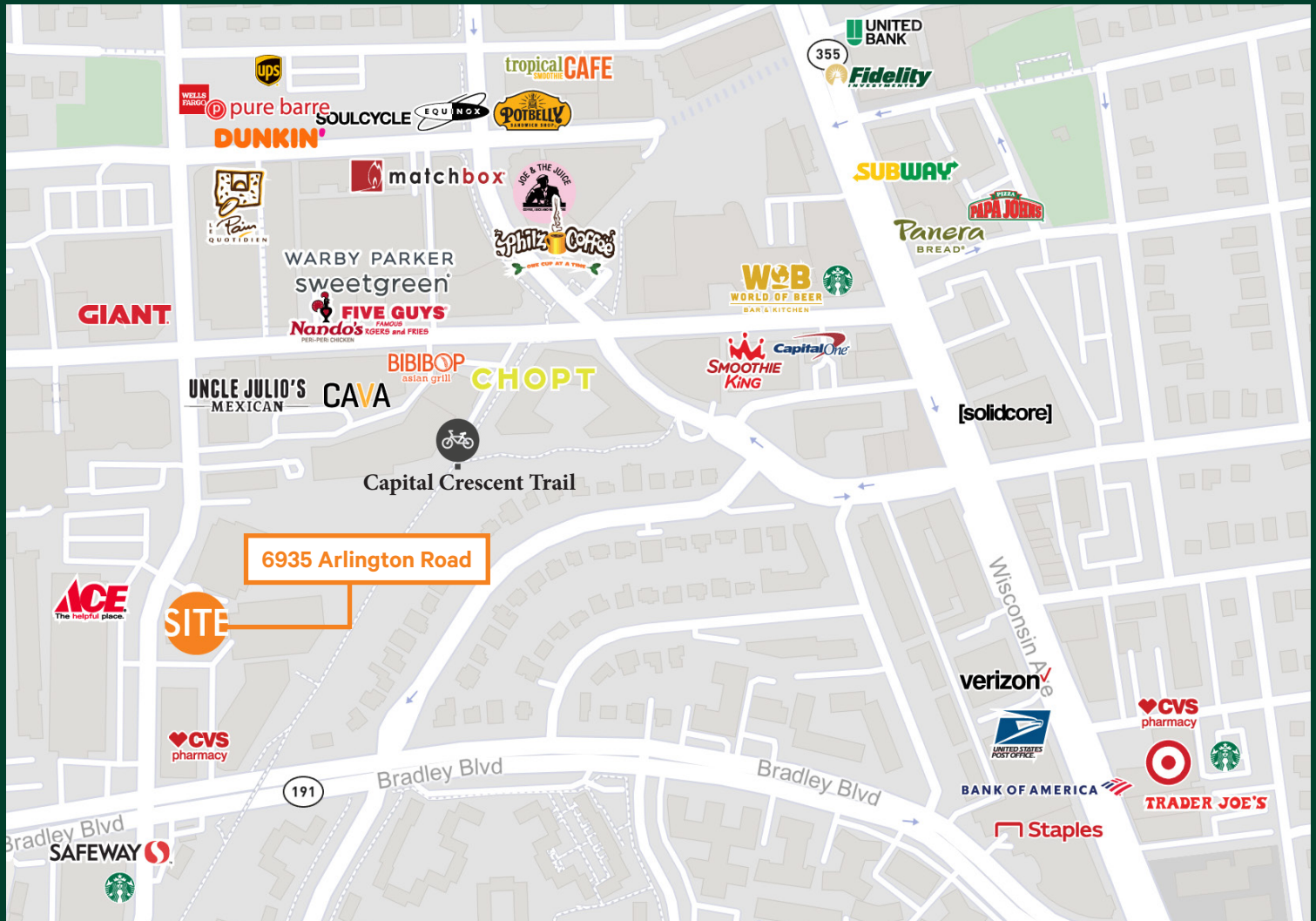


## 4TH FLOOR VIRTUAL TOUR



6935 Arlington Road | Bethesda, Maryland 20814

# Surrounding Amenities



## Contact Us

**Brad Wilner**  
Executive Vice President  
+1 301 215 4127  
brad.wilner@cbre.com

**Charlene Bogdanor**  
Vice President  
+1 301 215 4104  
charlene.bogdanor@cbre.com

**Tim Connolly**  
Vice President  
+1 301 215 4122  
tim.connolly@cbre.com

**Meghan Murray**  
Associate  
+1 301 215 4106  
meghan.murray@cbre.com

© 2021 CBRE, Inc. All rights reserved. This information has been obtained from sources believed reliable, but has not been verified for accuracy or completeness. You should conduct a careful, independent investigation of the property and verify all information. Any reliance on this information is solely at your own risk. CBRE and the CBRE logo are service marks of CBRE, Inc. All other marks displayed on this document are the property of their respective owners, and the use of such logos does not imply any affiliation with or endorsement of CBRE. Photos herein are the property of their respective owners. Use of these images without the express written consent of the owner is prohibited.