

34505 W 12 Mile Road

Farmington Hills, Michigan

Suite 170 | 3,168 RSF



Property Features

- + Campus setting with large courtyard and green spaces
- + Close proximity to M-5 providing connectivity to I-696, I-275, I-96
- + Amenities include on-site management, cafe, sundry shop, building conference room and atrium's with wi-fi
- + Suite 170 - 3,168 RSF fully furnished sublease at Arboretum II
- + Suite entry located directly off building entrance/lobby
- + Five (5) fully furnished offices with sidelights
- + Open area with eight (8) workstations
- + Large conference room with sidelight for up to 8-10 people
- + Small conference room for 4 people
- + Lease Expiration: May 31, 2026
- + Lease Rate: Contact Broker

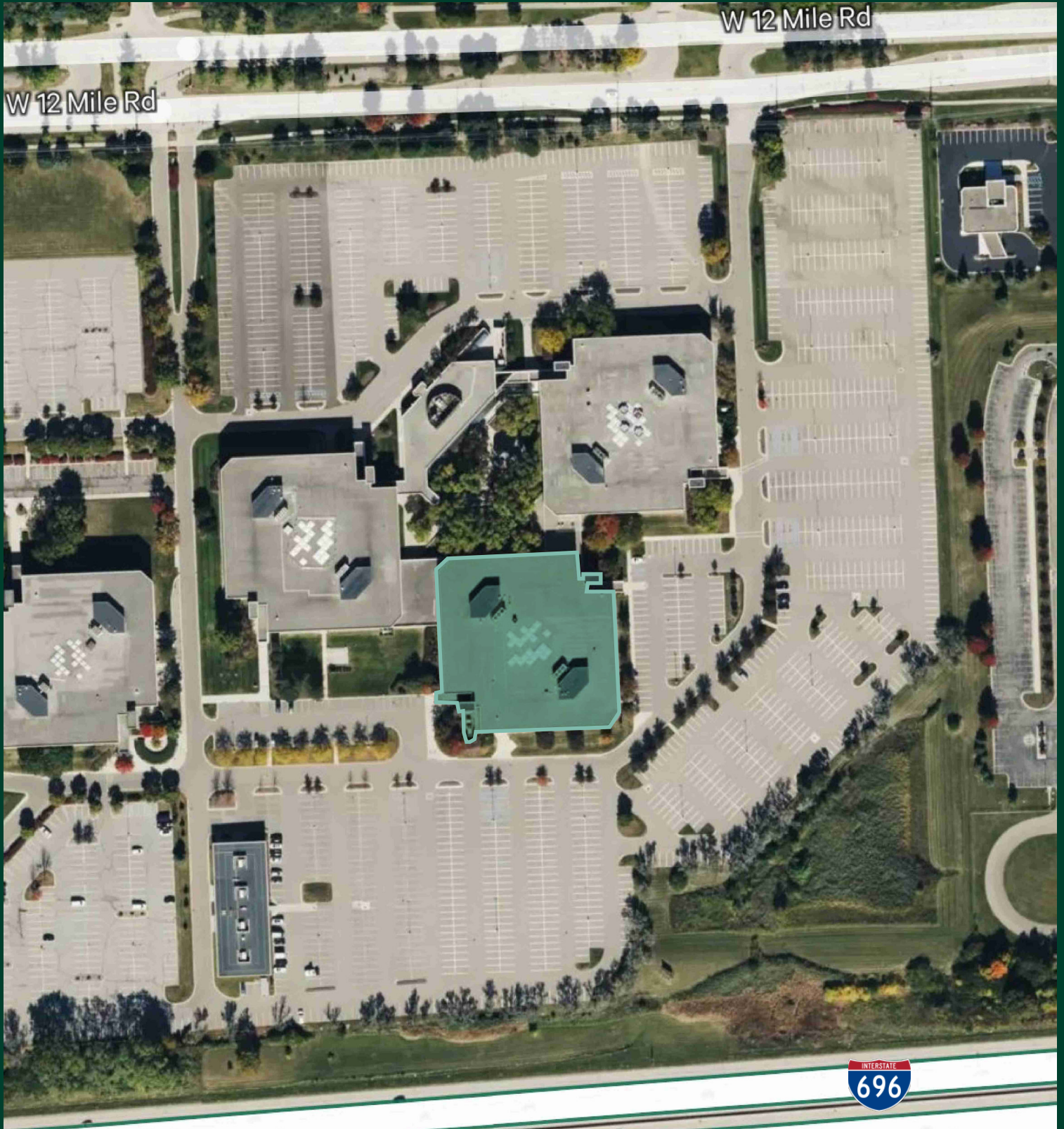
Suite Photos



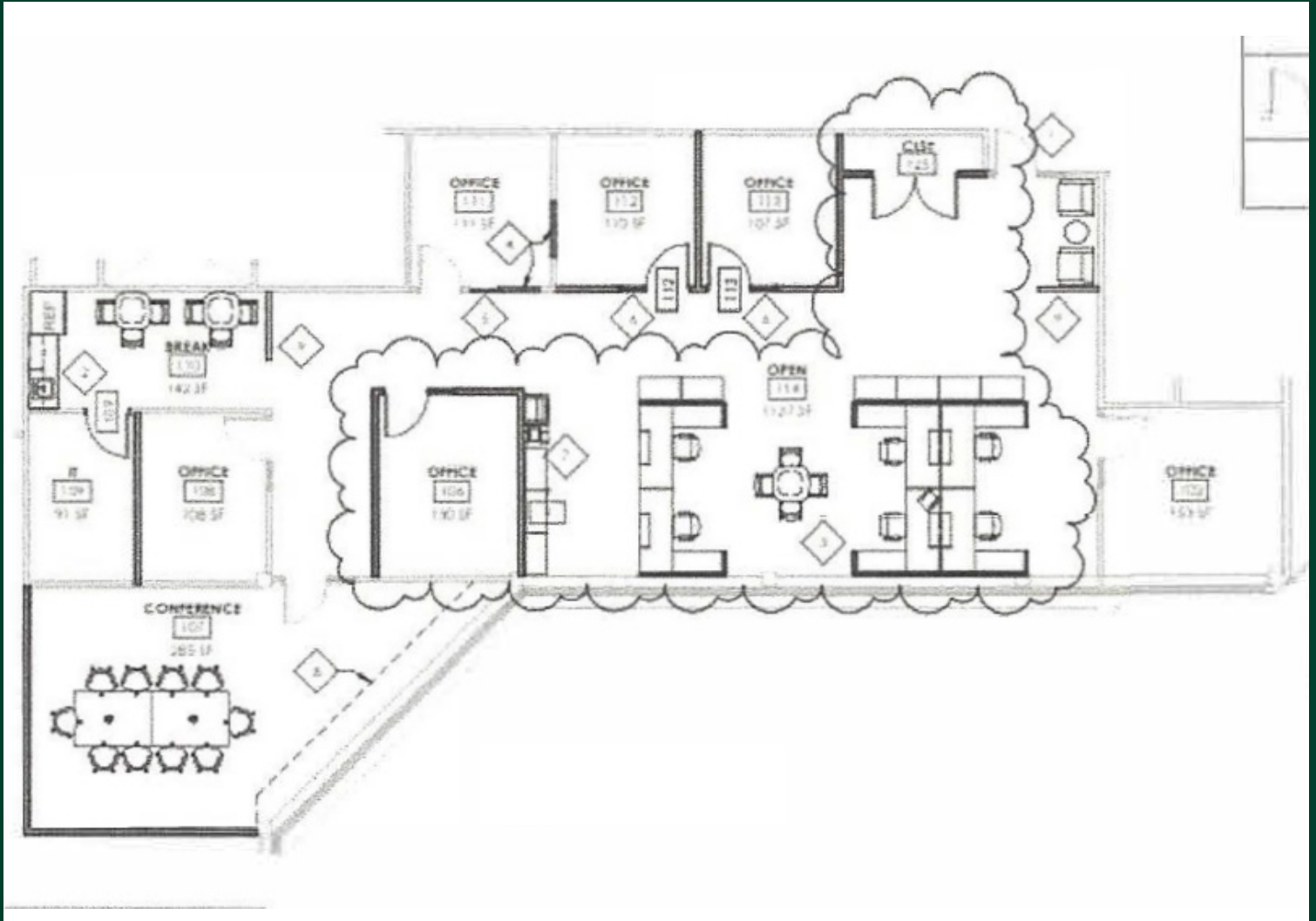
34505 W 12 Mile Road
Farmington Hills, Michigan

For Sublease

Site Aerial



Floor Plan | Suite 170 | 3,168 RSF



Contact Us

Brandon Carnegie

Vice President

+1 248 351 2054

brandon.carnegie@cbre.com

© 2024 CBRE, Inc. All rights reserved. This information has been obtained from sources believed reliable, but has not been verified for accuracy or completeness. You should conduct a careful, independent investigation of the property and verify all information. Any reliance on this information is solely at your own risk. CBRE and the CBRE logo are service marks of CBRE, Inc. All other marks displayed on this document are the property of their respective owners, and the use of such logos does not imply any affiliation with or endorsement of CBRE. Photos herein are the property of their respective owners. Use of these images without the express written consent of the owner is prohibited.