

600 Silveron Boulevard, Flower Mound, TX 75028

PROLOGIS FLOWER MOUND



CLASS A INDUSTRIAL PARK
±161,716 SF FOR LEASE

CBRE

 **PROLOGIS**[®]

Class A Industrial Space

With Triple Freeport Status

- Flexible building configuration
- Build-to-suit office
- ESFR sprinkler system
- ±161,716 SF
- 32' Clear Height
- 6" thick slab
- 37 dock doors
 - 17 with levelers
 - 2 with ramp
- 219 auto parking spaces
- 41 trailer parking spaces

The Prologis Advantage

Prologis Essentials delivers the next generation of solutions to rapidly streamline efficiencies across the most critical areas of fulfillment. The Essentials platform includes:



OPERATIONS



ENERGY + SUSTAINABILITY



MOBILITY



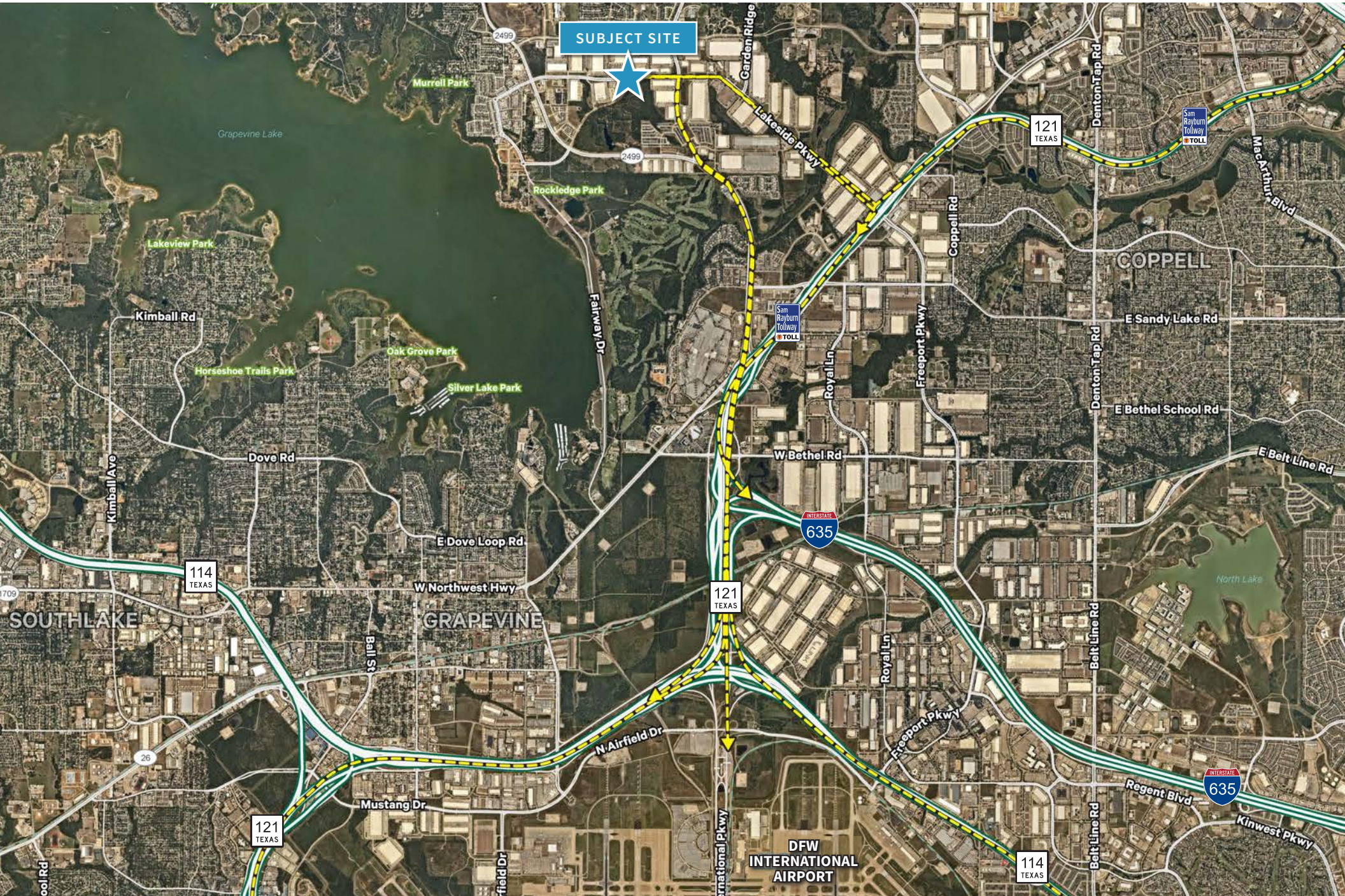
WORKFORCE

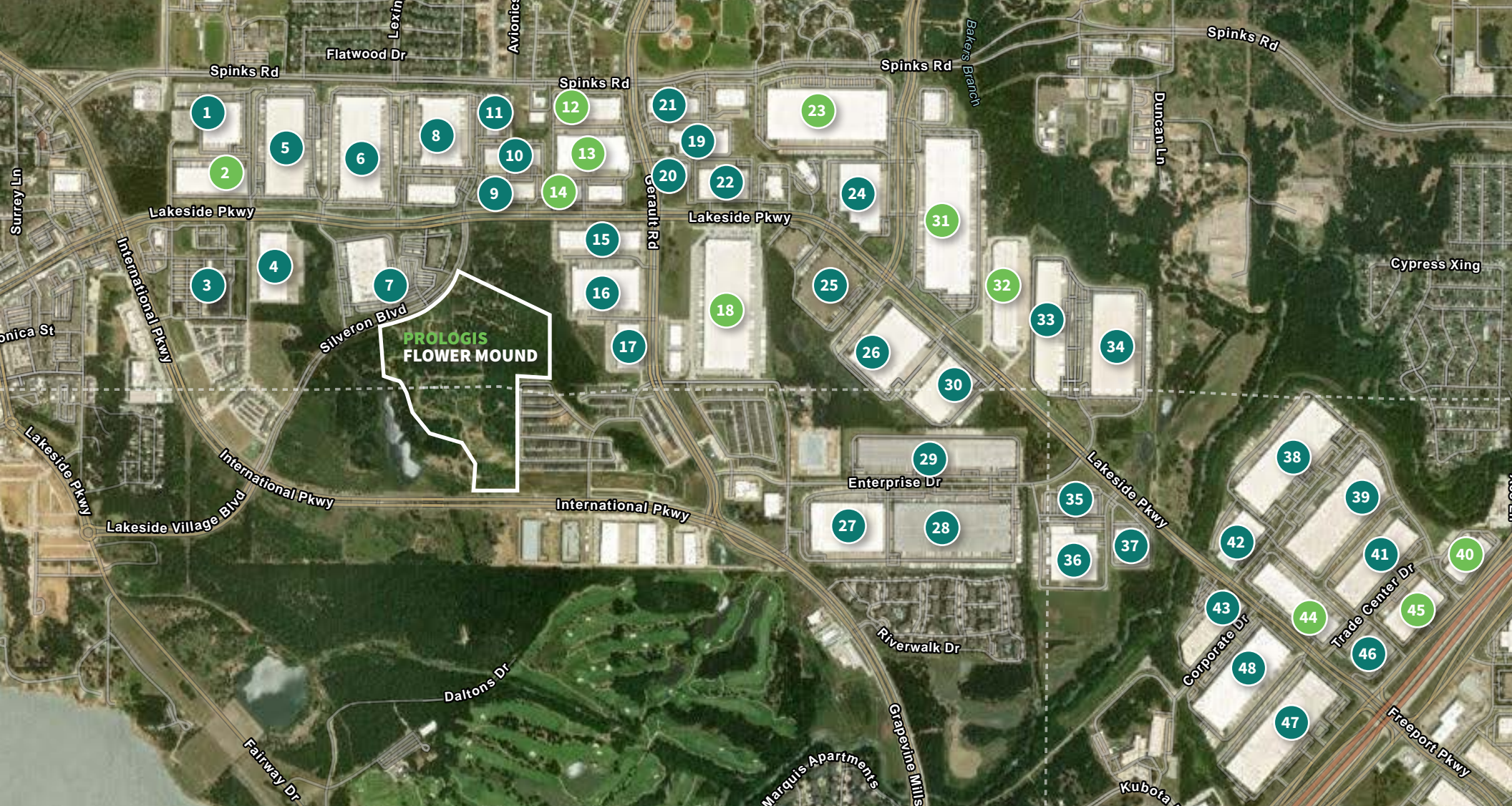


Prime Location

Near DFW Airport and Major Highways

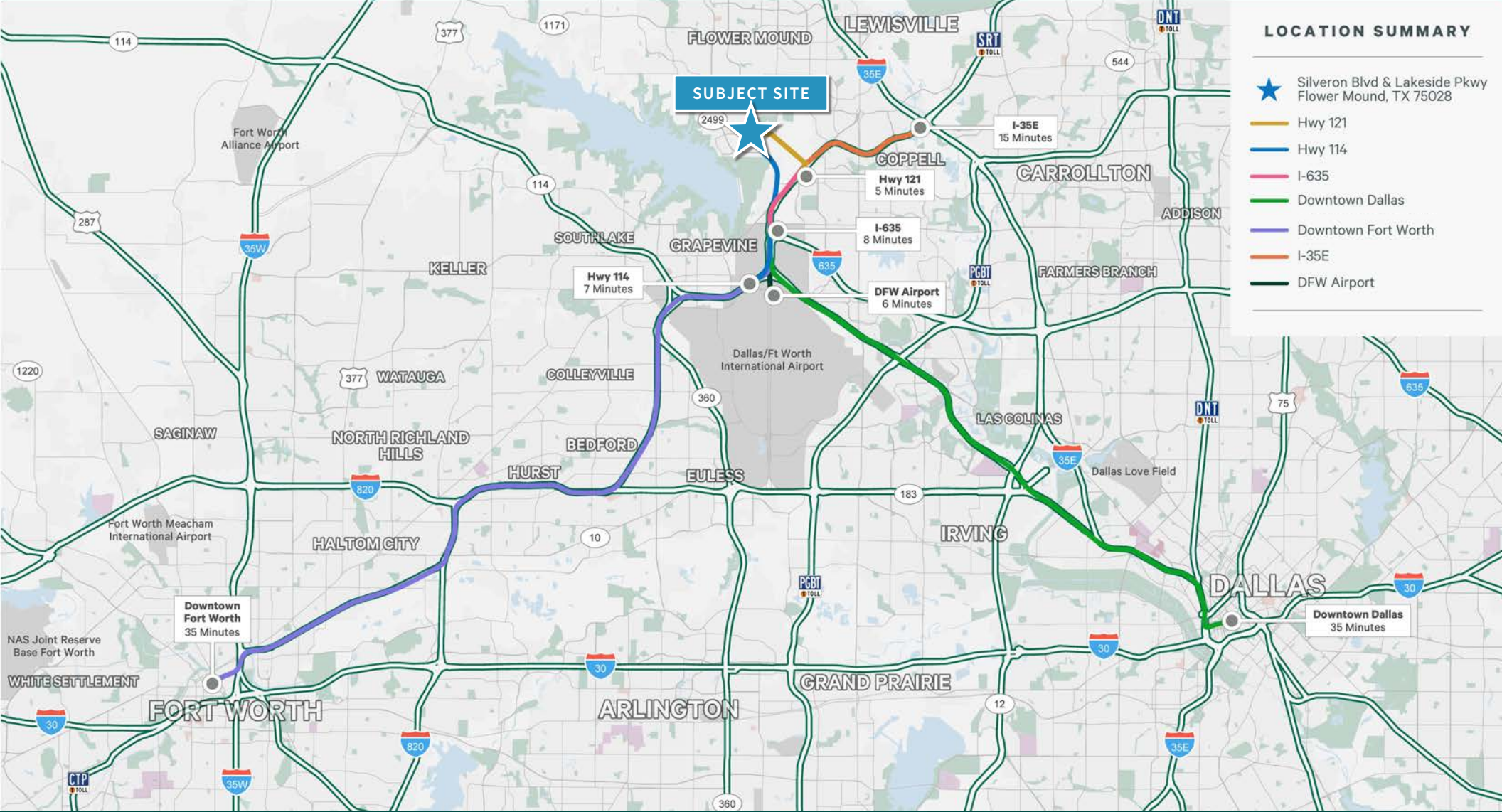
Prologis Flower Mound is conveniently located near major highways and transportation hubs, such as SH 114, SH 121, I-635, I-30, and I-20, as well as DFW International Airport and Union Pacific Intermodal facility. This proximity facilitates seamless logistics and transportation capabilities.





- | | | | | | |
|-----------------------------------|-----------------------------------------------------------------------------------------------|------------------------------------------|------------------------------------------------------|-----------------------------------|-----------------------------------|
| 1. Lisanti Food Services of Texas | 10. Taurus Technologies | 17. Bohm Technologies | 25. Modis | 33. SCP Distributors | 41. Soft Air USA |
| 2. Wayfair | 11. Ceutical Laboratories Inc | 18. PPG Architectural Finishes Inc. | 26. JC Millwork | 34. Jacobson Co | 42. KG1 Forged |
| 3. The Home Depot | 12. Polaris , LUX ICE, LLC | 19. National Powersport Auctions | 27. Dallas DC | 35. Mercedes Benz Training Center | 43. Cynergy |
| 4. TelTec Group | 13. Veho Tech, Inc., Firstech LLC, Arbor International LLC, Renaissance Repair and Supply Inc | 20. Advantage Storage | 28. Best Buy Warehouse | 36. Mercedes-Benz USA LLC | 44. Rockwell Medical Technologies |
| 5. MI Windows and Doors | 14. ThermoTek | 21. Global Net Logistics | 29. LX Hausys America | 37. TST IMPRESO | 45. Cheng Shin Rubber USA, Inc. |
| 6. WORLDPAC Inc. | 15. Dallas Mainfreight Transport | 22. Spears Manufacturing | 30. Keystone Automotive Operations | 38. RR Donnelly | 46. Landsberg Orora |
| 7. Stryker (Communications) | 16. Hardware Resources | 23. Thirty-One Gifts Distribution Center | 31. Owens & Minor Distribution, HD Supply Facilities | 39. McKesson Medical-Surgical | 47. Guntner Us LLC |
| 8. FFF Enterprises | | 24. Zenith Global Logistics | 32. Likewize Corp | 40. AIT Worldwide Logistics | 48. Ecolab |
| 9. Haag Engineering Co | | | | | |

● Owned by Prologis



LOCATION SUMMARY

- ★ Silveron Blvd & Lakeside Pkwy
Flower Mound, TX 75028
- Hwy 121
- Hwy 114
- I-635
- Downtown Dallas
- Downtown Fort Worth
- I-35E
- DFW Airport

PROLOGIS FLOWER MOUND

For additional information, please contact:

STEVE TRESE
Executive Vice President
+1 214 979 6534
steve.trese@cbre.com

WILSON BROWN
Senior Vice President
+1 214 979 6582
wilson.brown@cbre.com

AHNEE SHEEHY
Director, Leasing
+1 972 884 9254
asheehy@prologis.com

SAL GIUNTA
Leasing Manager
+1 972 884 9247
sgiunta@prologis.com

© 2023 CBRE, Inc. All rights reserved. This information has been obtained from sources believed reliable, but has not been verified for accuracy or completeness. You should conduct a careful, independent investigation of the property and verify all information. Any reliance on this information is solely at your own risk. CBRE and the CBRE logo are service marks of CBRE, Inc. All other marks displayed on this document are the property of their respective owners. Photos herein are the property of their respective owners. Use of these images without the express written consent of the owner is prohibited.

