

Furnished Subleases in Iconic Dallas Tower

CITYPLACE | 2711 NORTH HASKELL AVE, SUITE 1450 | DALLAS, TX

APPROX. 14,032 RSF
14TH FLOOR
AVAILABLE NOW



CBRE



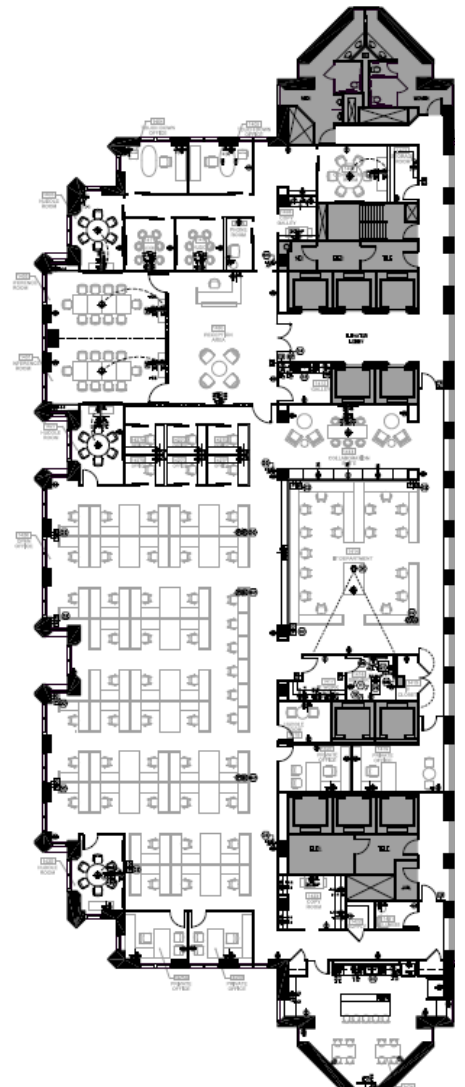
FEATURES

- Approximately 14,032 RSF
- Quoted Rental Rate: \$29.50 + E
- Lease Expiration: 10/31/2027
- Parking Ratio: 3.0/1000 RSF
- Elevator Lobby Exposure
- Terrific Views and Natural Light
- Conferencing and Event Facilities
- Direct Access to DART Light-Rail
- Card Key Access System and 24/7 Security
- On-Site Property Management by NexVest
- Uptown / North Central Expressway Location
- Excellent Connectivity and Popular Nearby Amenities — Concourse Access to West Village

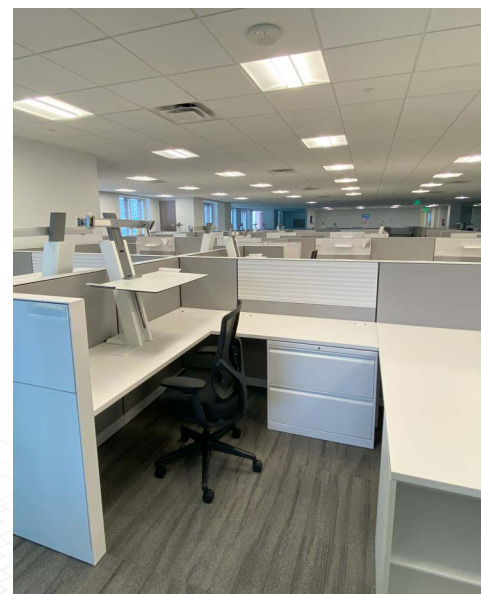
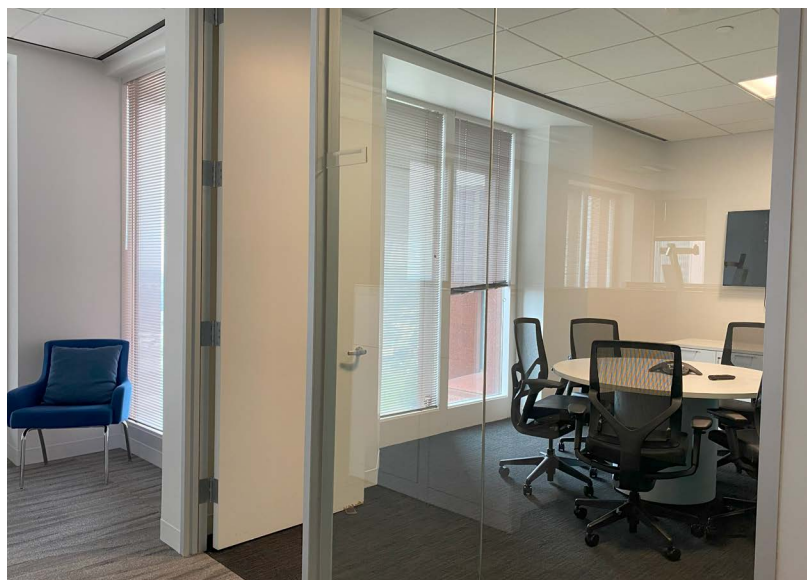
SPACE PROGRAMMING

- 6 Offices and 76 Workstations
- 8 Conference Rooms
- Large Breakroom, Coffee Bar, and 3 Storage Rooms

FLOOR PLAN: SUITE 1450

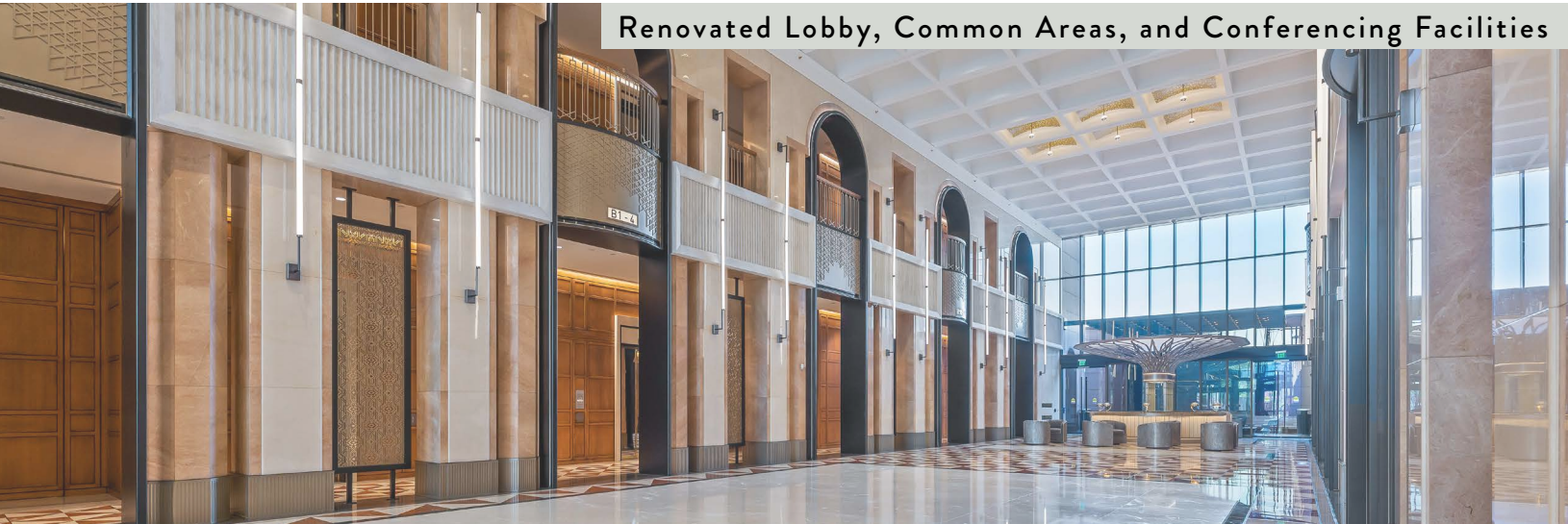


14TH FLOOR: +/-14,032 RSF



CITYPLACE TOWER

Renovated Lobby, Common Areas, and Conferencing Facilities



Local Food Concepts & Coffee Bar



Dining & Lounge Area



Updated Concourse with Access to West Village & DART Light-Rail



Fitness Center with Locker Rooms



FOR MORE INFORMATION:

NOREEN MEHDI

Vice President
+1 214 728 8434
noreen.mehdi@cbre.com

JAD CHARIF

Associate
+1 214 600 5172
jad.charif@cbre.com

CBRE