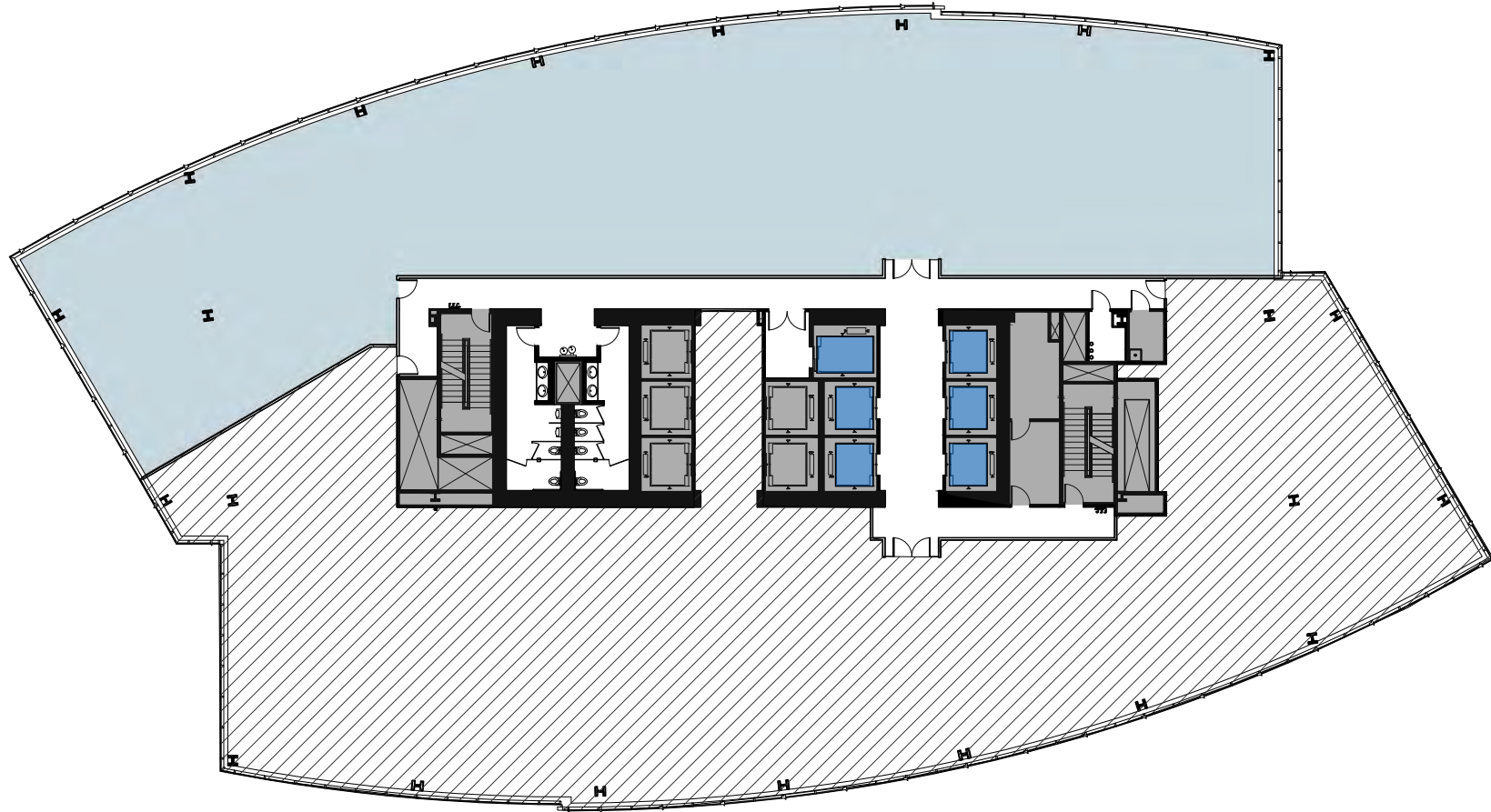


# Floor 6

10,787 RSF



Greg Inglin  
Laura Ford  
Scott Davis

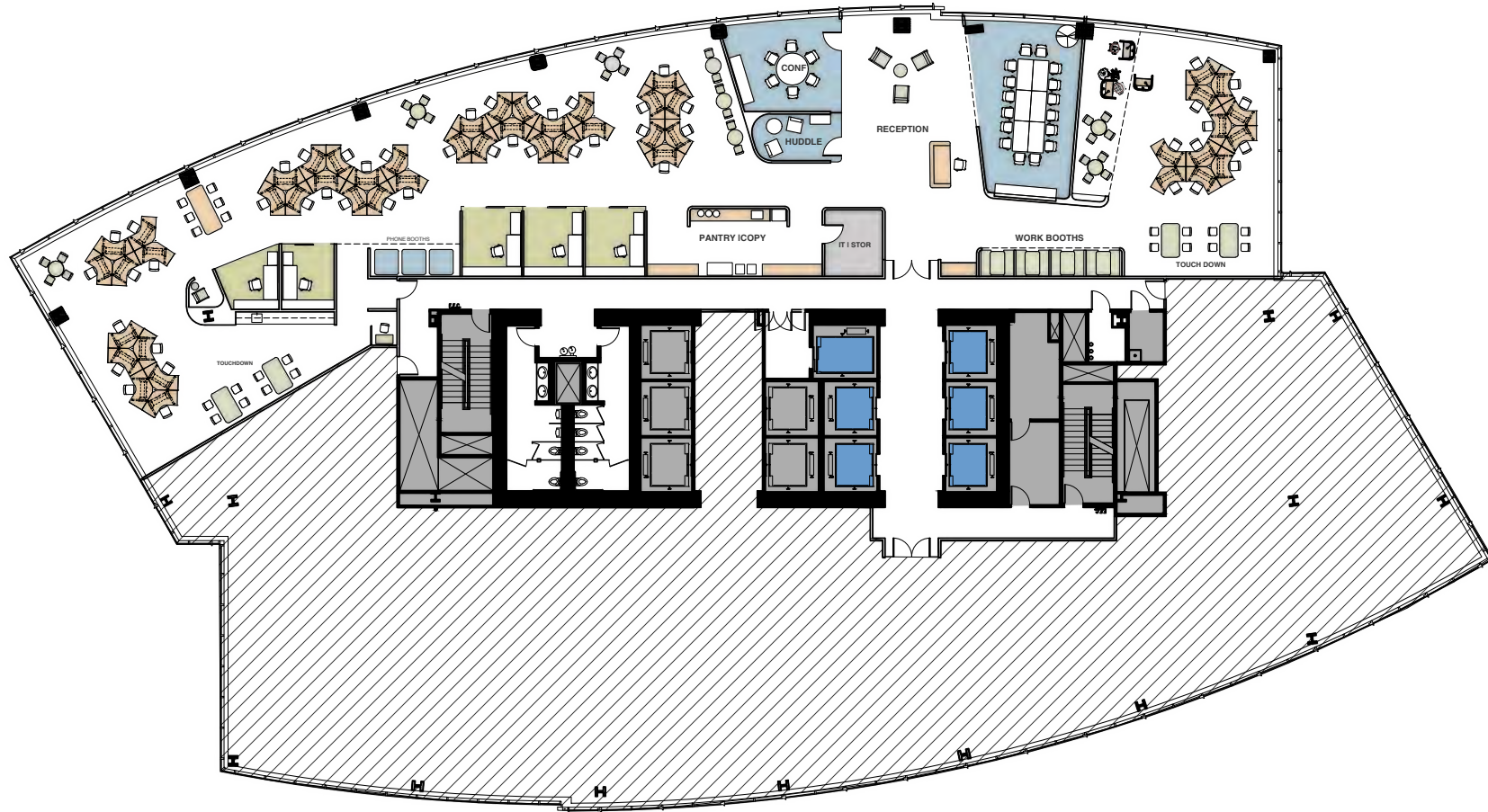
206.292.6128 / [greg.inglin@cbre.com](mailto:greg.inglin@cbre.com)  
206.292.6120 / [laura.ford@cbre.com](mailto:laura.ford@cbre.com)  
425.462.6912 / [scott.davis@cbre.com](mailto:scott.davis@cbre.com)

CommonWealth  
*partners*

**CBRE**

# Floor 6

HYBRID OFFICE  
10,787 RSF



Greg Inglin  
Laura Ford  
Scott Davis

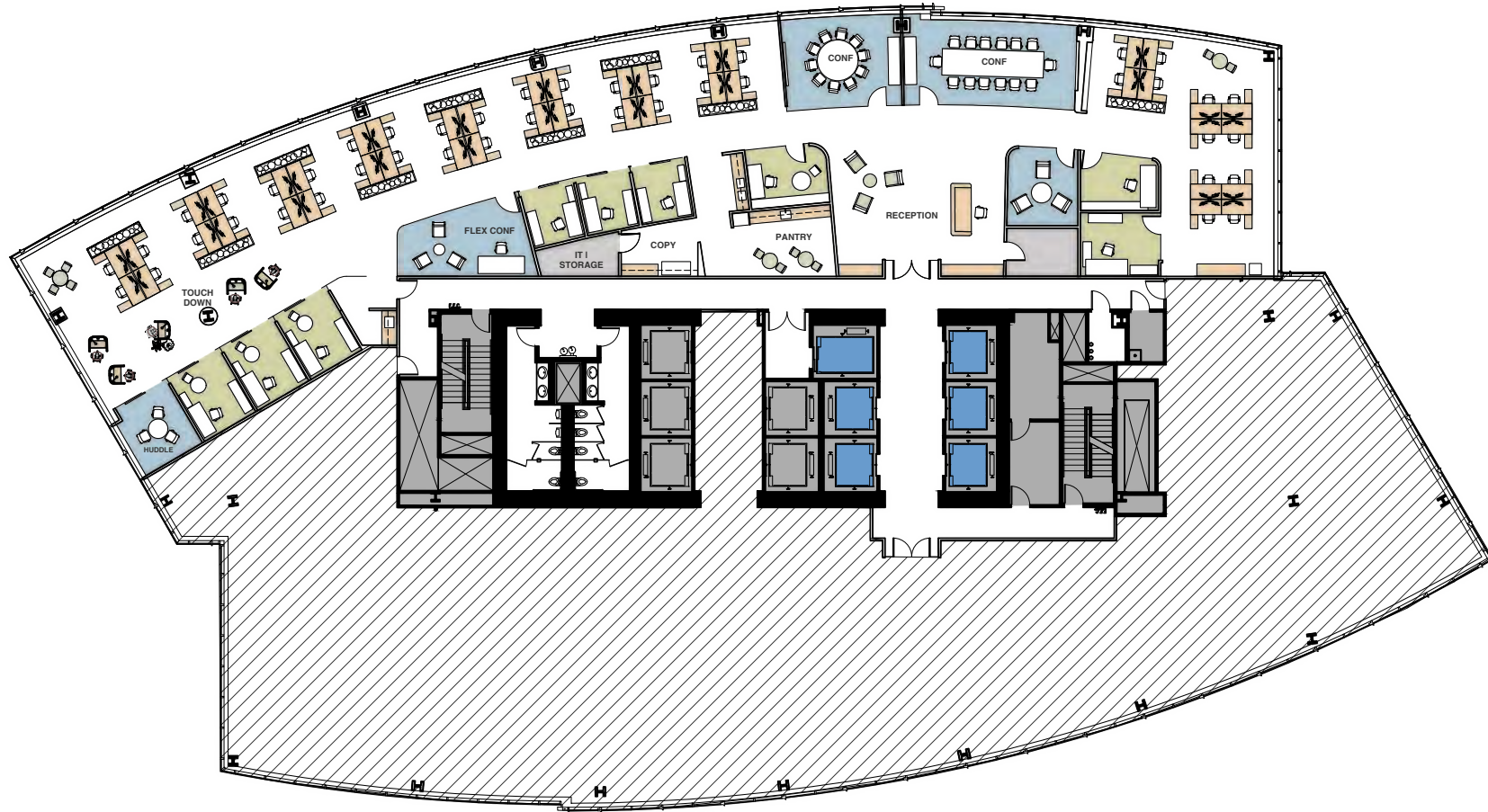
206.292.6128 / [greg.inglin@cbre.com](mailto:greg.inglin@cbre.com)  
206.292.6120 / [laura.ford@cbre.com](mailto:laura.ford@cbre.com)  
425.462.6912 / [scott.davis@cbre.com](mailto:scott.davis@cbre.com)

CommonWealth  
*partners*

**CBRE**

# Floor 6

TECH OFFICE  
10,787 RSF



Greg Inglin  
Laura Ford  
Scott Davis

206.292.6128 / [greg.inglin@cbre.com](mailto:greg.inglin@cbre.com)  
206.292.6120 / [laura.ford@cbre.com](mailto:laura.ford@cbre.com)  
425.462.6912 / [scott.davis@cbre.com](mailto:scott.davis@cbre.com)

CommonWealth  
*partners*

**CBRE**