



1300 South MoPac

Austin Texas
78746
www.cbre.com



Information:



5th Floor – 36,033 RSF

- + **Rate:** Call Broker
- + **Sublease Term:** Flexible
- + **Structured Parking:** 3.5/1,000 SF
- + **Furniture included**

- + **Credit Sublessor**
- + **5-mile walking trail**
- + Incredible Downtown views
- + Easy access at Barton Skyway



Site Plan:

5th Floor – 36,033 RSF

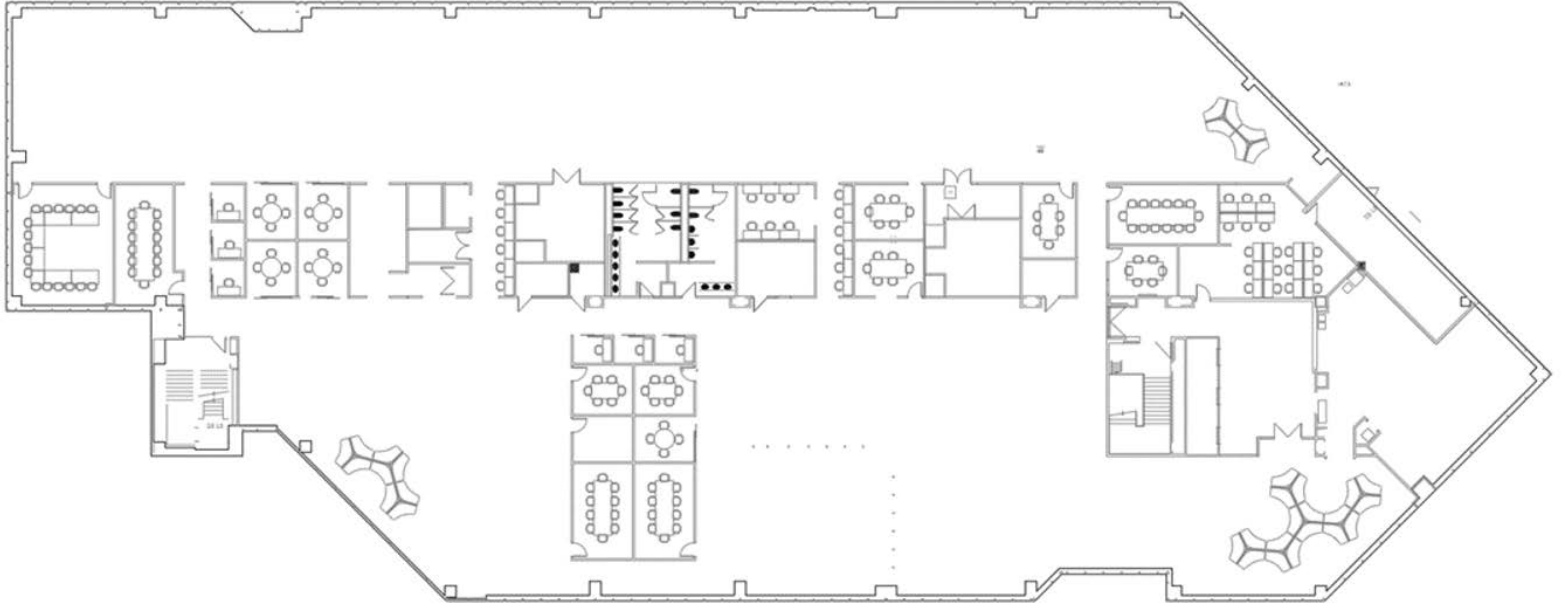


Subject Suite is the top floor of Wing C with views of downtown



Floorplan:

5th Floor – 36,033 RSF



Contact Us



Trey Low
Senior Associate
512-499-4952
Trey.Low@cbre.com



Tim Donohue
Senior Vice President
914-844-4183
Timothy.Donohue@cbre.com

© 2024 CBRE, Inc. All rights reserved. This information has been obtained from sources believed reliable, but has not been verified for accuracy or completeness. You should conduct a careful, independent investigation of the property and verify all information. Any reliance on this information is solely at your own risk. CBRE and the CBRE logo are service marks of CBRE, Inc. All other marks displayed on this document are the property of their respective owners, and the use of such logos does not imply any affiliation with or endorsement of CBRE. Photos herein are the property of their respective owners. Use of these images without the express written consent of the owner is prohibited.