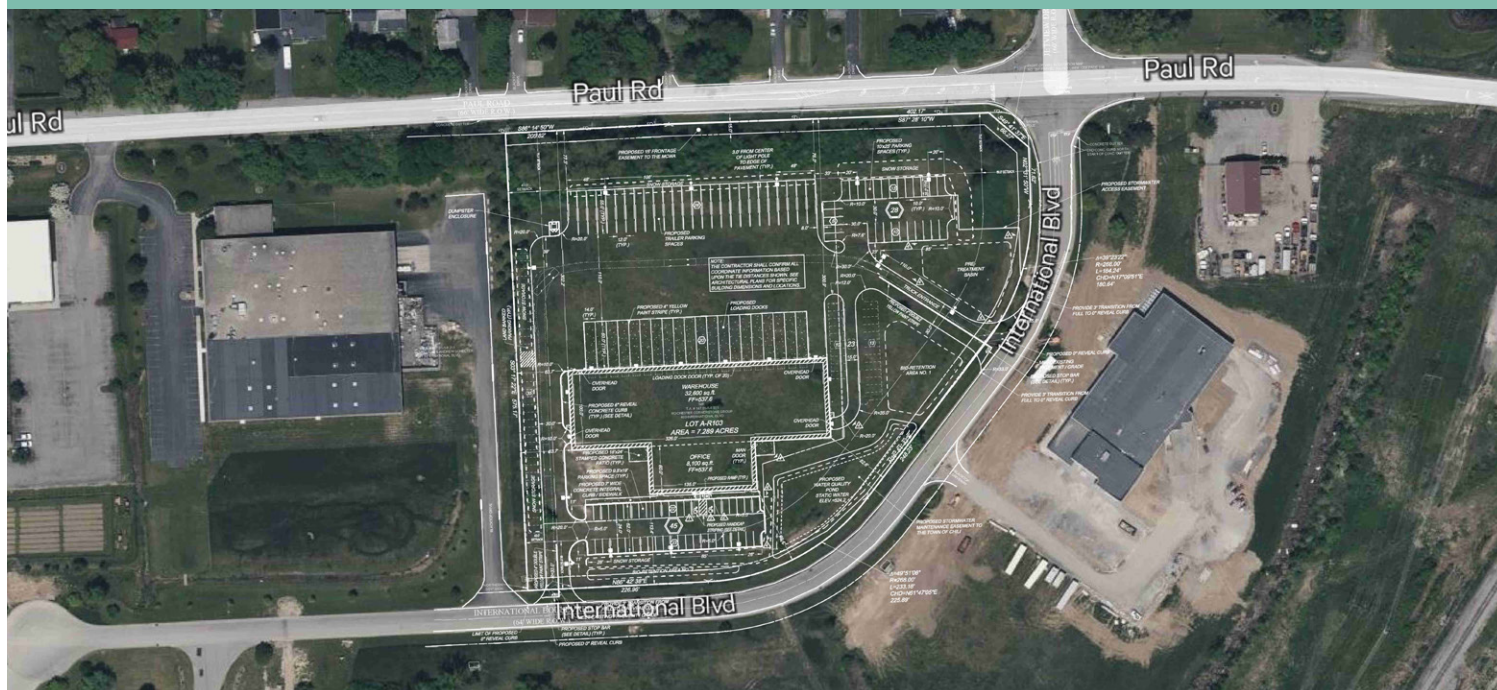


New Industrial Construction

20,640 Square Feet Available

400 International Blvd
Chili, NY 14624

Space Features 9 Loading Docks & 2 Grade Level Doors

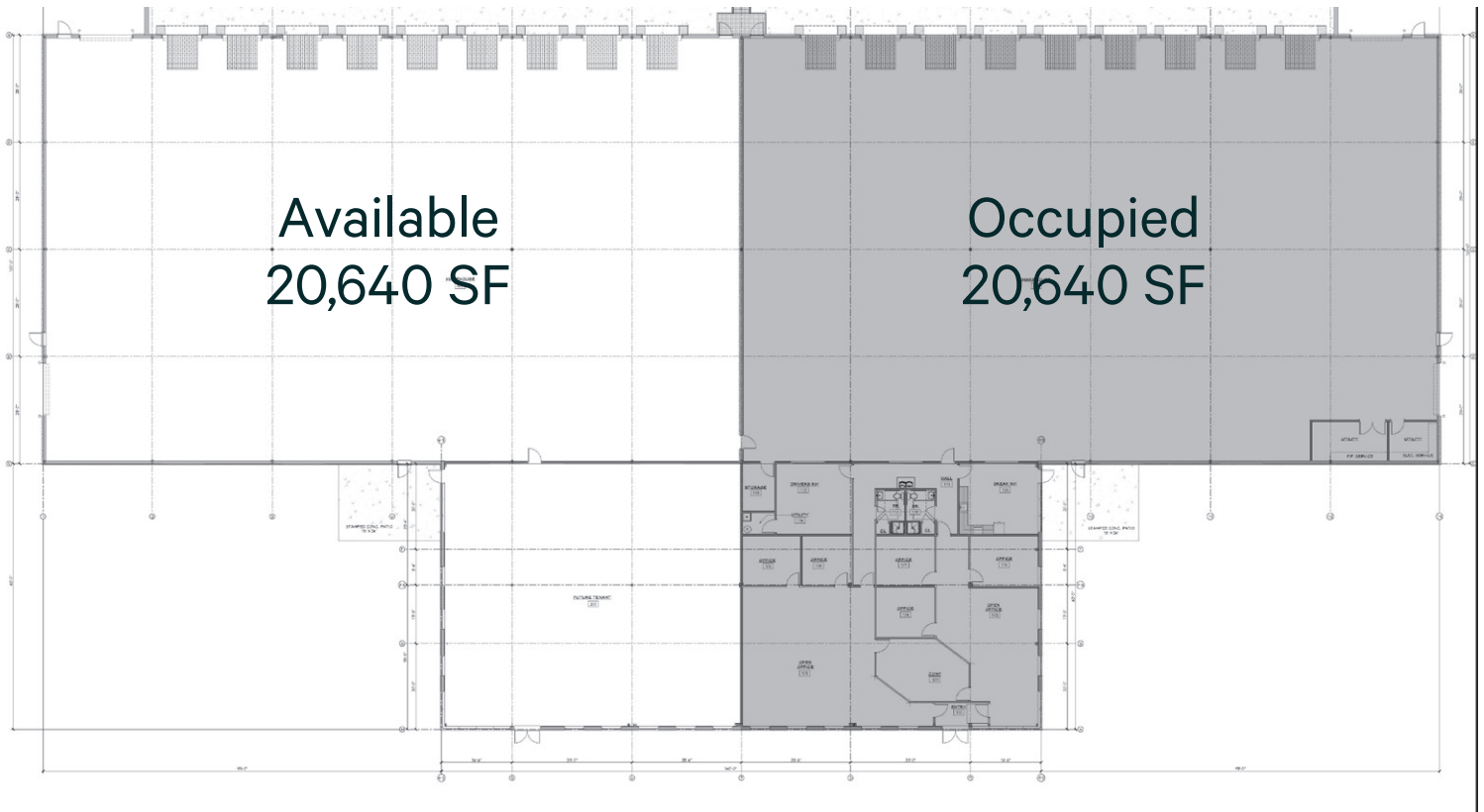


Property Overview

This 41,280 square foot industrial building is currently under construction at the corner of Paul Road and International Boulevard in the Town of Chili. With half of the building (20,640 square feet) remaining available for lease, this property offers a tenant the opportunity to occupy high-quality, first generation space with exceptional loading and a location with convenient expressway access.

Offering Details

- + 20,640 SF Available
- + 16,300 SF Warehouse with 9 Docks and 2 Grade Level Doors
- + 4,340 SF Office
- + Pricing: Negotiable



Property Details

- + 20,640 Square Feet Total
 - 16,300 SF Warehouse (100' x 163')
 - 4,340 SF office
- + 30' Minimum Clear Height
- + 6" Concrete Floor
- + 9 Loading Docks (9'w x 10'h) with Levelers and Shelter
- + 2 Grade Level Doors (12'w x 14'h)
- + 50' x 54' Column Spacing
- + Stamped Concrete Patio off Break Room
- + Located minutes from I-390 & I-490

Contact Us

Patrick Wahl
+1 585 784 3633
patrick.wahl@cbre-rochester.com
Licensed Real Estate Salesperson

Harry Gleason, SIOR
+1 585 784 3639
harry.gleason@cbre-rochester.com
Licensed Associate Real Estate Broker

© 2025 CBRE Upstate NY, part of the CBRE Affiliate Network. All rights reserved. This information has been obtained from sources believed reliable, but has not been verified for accuracy or completeness. You should conduct a careful, independent investigation of the property and verify all information. Any reliance on this information is solely at your own risk. CBRE Upstate NY and the CBRE Upstate NY logo are service marks of CBRE Upstate NY. All other marks displayed on this document are the property of their respective owners, and the use of such logos does not imply any affiliation with or endorsement of CBRE Upstate NY. Photos herein are the property of their respective owners. Use of these images without the express written consent of the owner is prohibited.

