

For Sale Willow Chase Blvd & Centerfield Blvd

±2.69 acres

SWC Willow Chase Blvd & Centerfield Blvd Houston, TX 77070

EXECUTE CONFIDENTIALITY AGREEMENT



HIGHLAND TIMBERS
home values \$287k-\$378k

CHAMPIONS FOREST
home values \$350k-\$800k

VERSANTE CHAMPIONS
townhome values \$260k-\$315k

HOUSTON
Methodist
LEADING MEDICINE

HOME 2
SUITES BY HILTON

LIFETIME

HomeGoods
Marshalls

Total Wine & More
ROSS
DRESS FOR LESS
DSW
DESIGNER SHOE WAREHOUSE

Academy

The Tile Shop

five BELOW

Willow Chase Blvd
8,010 VPD

Centerfield Blvd
4,590 VPD

± 2.69 AC

Hilton Garden Inn

sam's club

DAISO

ULTA BEAUTY

FRIDAYS

WEN'S MARKET

249
TEXAS

126,858 VPD

ExxonMobil

FM-1960 Frontage

Fiesta

MATTRESS FIRM

ROOMS TO GO

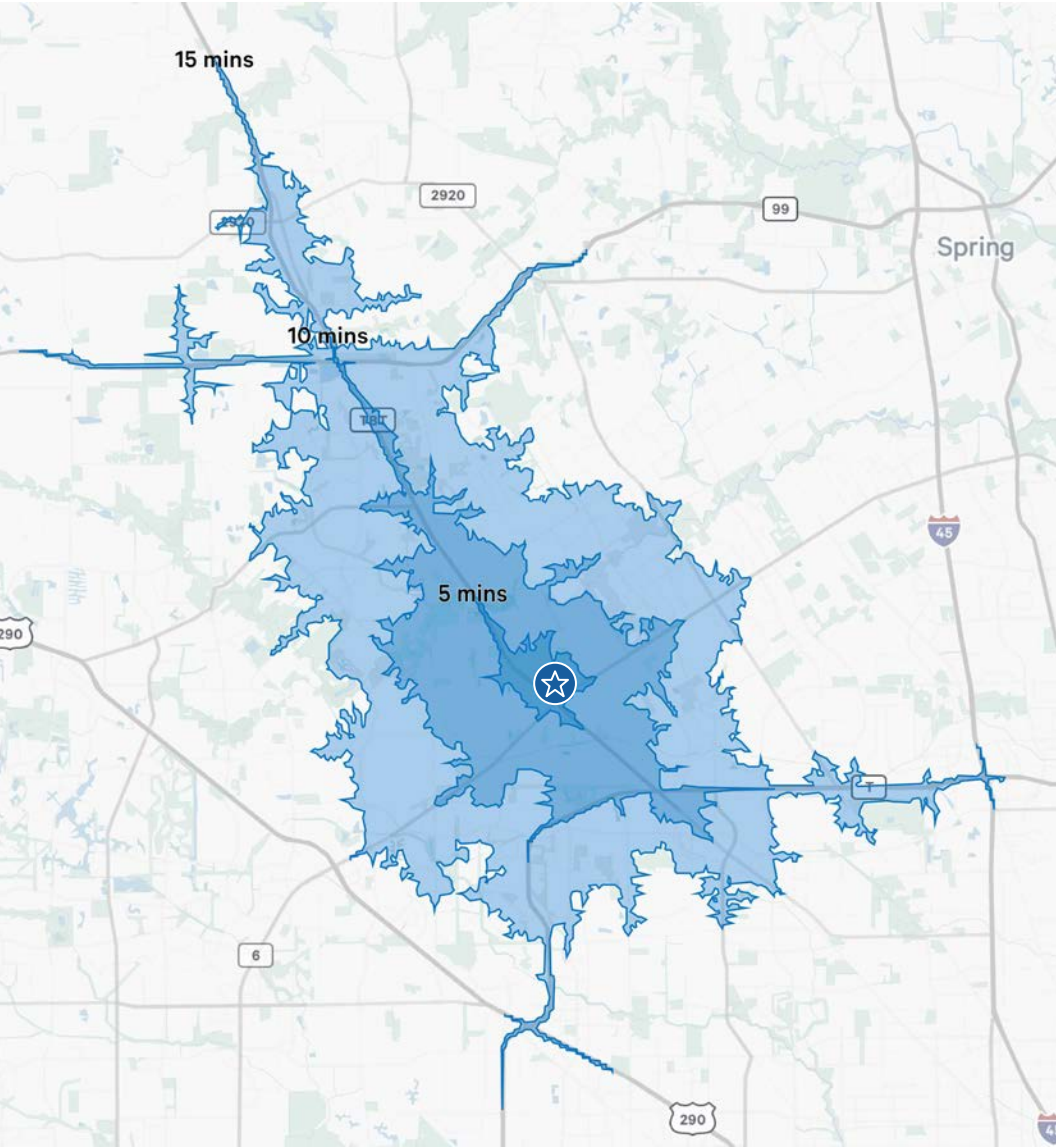
Julian Chargois
Senior Associate
T +1 713 577 3825
julian.chargois@cbre.com

Jackson Gill
Analyst
T +1 713 577 3820
jackson.gill@cbre.com

CBRE

CAPITAL MARKETS | LAND SERVICES

Commute & Demographics



Drive Times	Minutes
Downtown Houston	31
TMC	38
Galleria/Uptown	31

Property Information

Location

- SWC Willow Chase Blvd & Centerfield Blvd Houston, TX 77070

Property Information

- ± 2.69 acres
- Outside of floodplain
- No pipelines through tract
- Utilities available via City of Houston
- Total tax rate: \$2.322379 (2024)
- Cypress Fairbanks ISD (Hancock Elementary School, Bleyl Middle School, Cypress Creek High School)

Surrounding Area

- Established commercial corridor

Price

Call Broker for Pricing



Commute

Traffic Counts	Vehicles Per Day
Hwy 249	126,858
Beltway 8	162,232
Willow Chase Blvd	8,010
Centerfield Blvd	4,590



2024 Demographics

Population Summary	1-Miles	3-Miles	5-Miles
Population	24,640	167,576	443,143
Median Age	37.0	36.1	35.8
Average Household Income	\$218,460	\$169,011	\$141,232
Average Home Value	\$592,617	\$556,071	\$549,269
College Degree or Higher	79.0%	64.6%	52.8%

Property Aerial



Property Aerial



For Sale

Willow Chase Blvd & Centerfield Blvd

EXECUTE CONFIDENTIALITY AGREEMENT

www.cbre.com

Contact Us

Julian Chargois

Senior Associate

T +1 713 577 3825

julian.chargois@cbre.com

Jackson Gill

Analyst

T +1 713 577 3820

jackson.gill@cbre.com

CAPITAL MARKETS | LAND SERVICES

CBRE

© 2023 CBRE, Inc. All rights reserved. This information has been obtained from sources believed reliable, but has not been verified for accuracy or completeness. You should conduct a careful, independent investigation of the property and verify all information. Any reliance on this information is solely at your own risk. CBRE and the CBRE logo are service marks of CBRE, Inc. All other marks displayed on this document are the property of their respective owners, and the use of such logos does not imply any affiliation with or endorsement of CBRE. Photos herein are the property of their respective owners. Use of these images without the express written consent of the owner is prohibited.