



**Retail
Space
Available!**

245 North Highland Avenue

Atlanta, GA 30307

**Rare
Opportunity
In The Heart
Of Inman
Park!**



CBRE

Property Overview

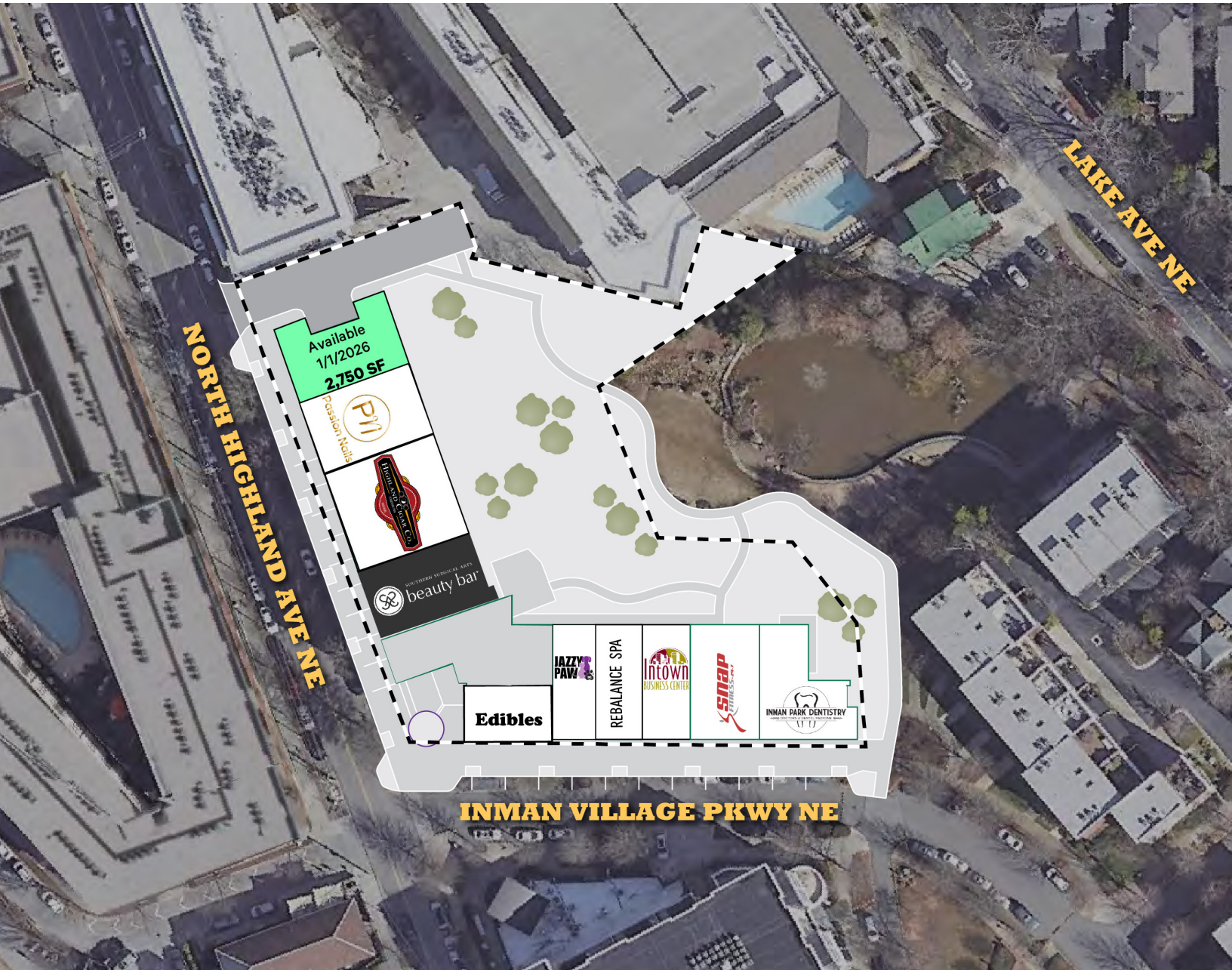
- Unparalleled location in one of the best neighborhoods in Atlanta
- Directly across the street from the popular Delbar Restaurant
- Perfect for retail, service, or design showroom
- Vacancy in this area does not come often!



Retail Map



Site Plan

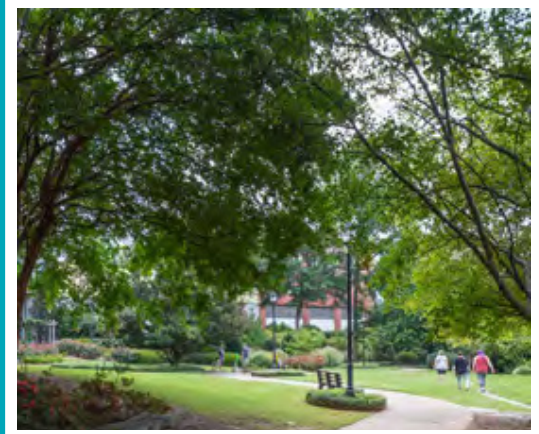


Suite 170

2,750 SF

- Corner Location On North Highland Avenue
- 2-Sided Glass Storefront
- Immediate Access To The Beltline's Eastside Trail
- Strong Foot Traffic & Daytime Population With A Walking Score Of 92

INMAN PARK VILLAGE SHOPS





POPULATION

31,110

2025 POPULATION WITHIN
1 MILE OF 245 N HIGHLAND AVE



RESIDENTIAL DEVELOPMENT

18,748

HOUSEHOLDS
WITHIN 1 MILE

97,432

HOUSEHOLDS
WITHIN 3 MILES



46%

ARE
MILLENNIALS



21%

ARE
GENERATION Z



58%

ARE
SINGLE



79%

HAVE A BACHELOR'S
DEGREE OR HIGHER



\$162K

IS THE AVERAGE
HOUSEHOLD INCOME



Contacts

Amy Fingerhut

Senior Vice President

+1 404 812 5156

amy.fingerhut@cbre.com

CBRE, Inc.

+1 404 504 7900

cbre.com/atlanta



CBRE

© 2025 CBRE, Inc. All rights reserved. This information has been obtained from sources believed reliable but has not been verified for accuracy or completeness. CBRE, Inc. makes no guarantee, representation or warranty and accepts no responsibility or liability as to the accuracy, completeness, or reliability of the information contained herein. You should conduct a careful, independent investigation of the property and verify all information. Any reliance on this information is solely at your own risk. CBRE and the CBRE logo are service marks of CBRE, Inc. All other marks displayed on this document are the property of their respective owners, and the use of such marks does not imply any affiliation with or endorsement of CBRE. Photos herein are the property of their respective owners. Use of these images without the express written consent of the owner is prohibited.