

Lackman Business Park Building A

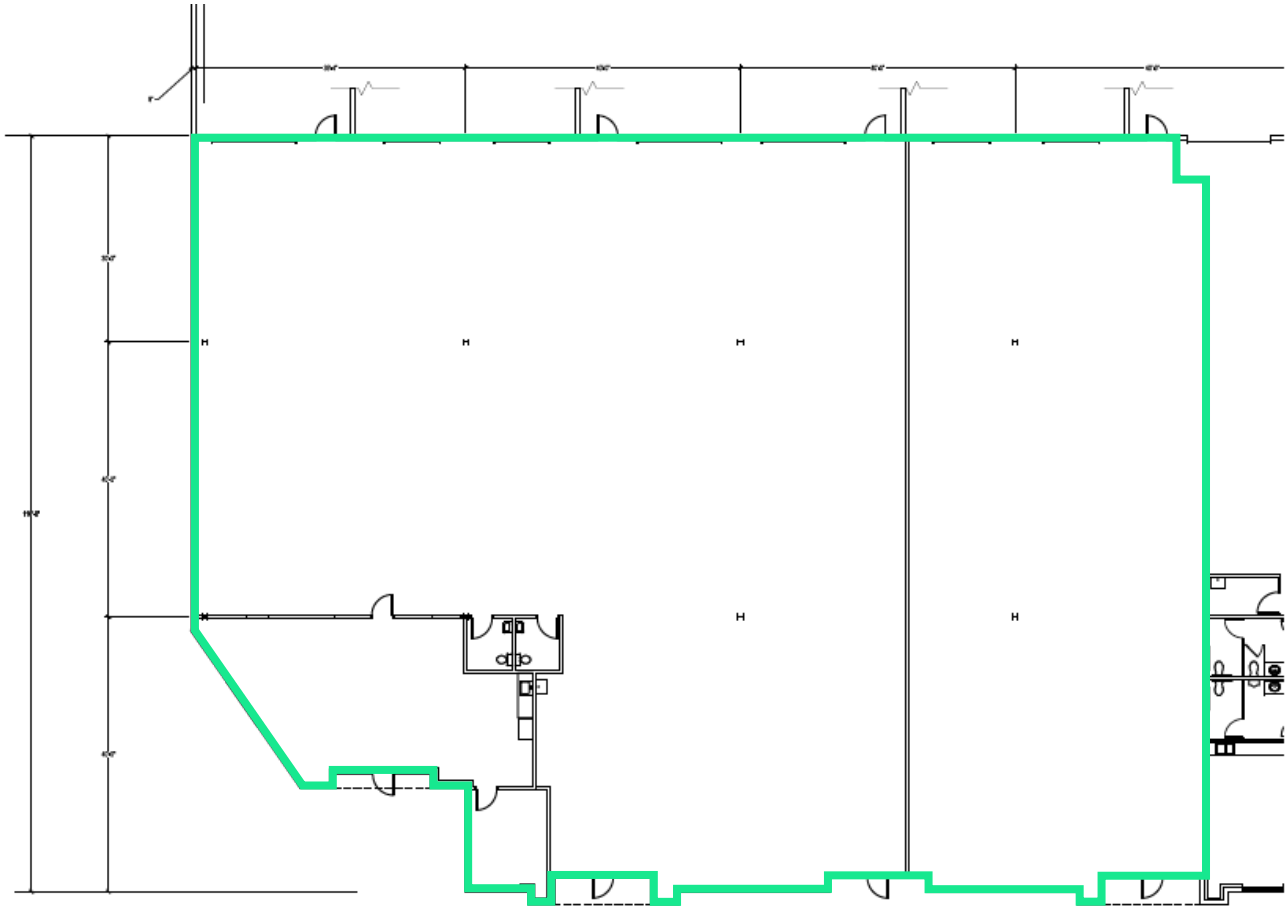
10098 Lackman Rd | Lenexa, KS

Great Lackman Visibility and I-435 Accessibility

Divisible to 4K, 8K, 12K or 15,678 SF



Floor Plan



Building Specs

Available Space: 15,678+/- SF (Divisible to 4K, 8K, 12K SF)

Office Space: Minimal

Loading Docks: 4

Drive-Ins: 3

Clear Height: 22'

Asking Rate: \$8.50 - \$10.50 PSF NNN

Nets: CAM (inclusive of reserves and 4% management fee): \$1.87 PSF
Insurance: \$0.28 PSF
Taxes: \$3.45 PSF
Total: \$5.60 PSF

Property Location



Contact Us

Mike Mitchelson, SIOR, CCIM

Executive Vice President

+1 816 968 5807

Mike.mitchelson@cbre.com

Ben Whetstone

Senior Associate

+1 816 968 5809

Ben.Whetstone@cbre.com

© 2025 CBRE, Inc. All rights reserved. This information has been obtained from sources believed reliable, but has not been verified for accuracy or completeness. You should conduct a careful, independent investigation of the property and verify all information. Any reliance on this information is solely at your own risk. CBRE and the CBRE logo are service marks of CBRE, Inc. All other marks displayed on this document are the property of their respective owners, and the use of such logos does not imply any affiliation with or endorsement of CBRE. Photos herein are the property of their respective owners. Use of these images without the express written consent of the owner is prohibited.