



# ROYAL PARKWAY I

2501 PERIMETER PLACE DRIVE

## SUITE 100

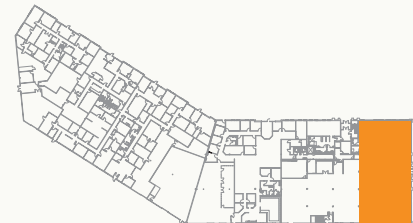
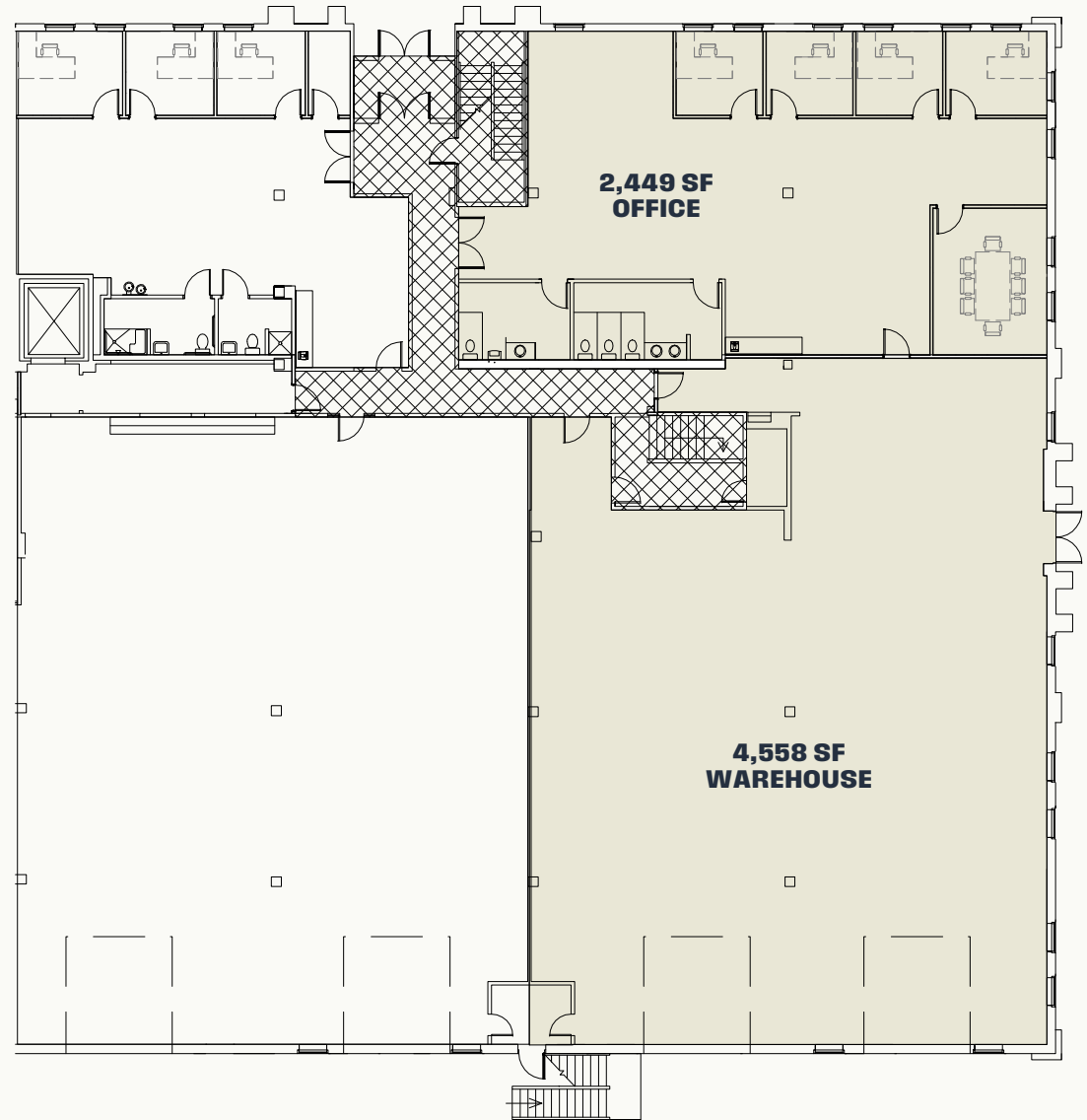
Floor 1

**OFFICE + WAREHOUSE**

**7,009 SF**  
Premises

**December 2025**  
Possession

- Move-in-ready spec suite
- Highly efficient layout
- 14' clear height in warehouse
- Full HVAC in warehouse
- Oversized 12'x12' roll-up doors
- Interior elevator/stairwells
- Exterior building signage available





# ROYAL PARKWAY I

2501 PERIMETER PLACE DRIVE

## SUITE 150

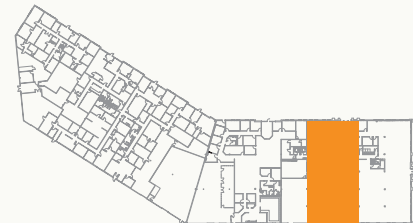
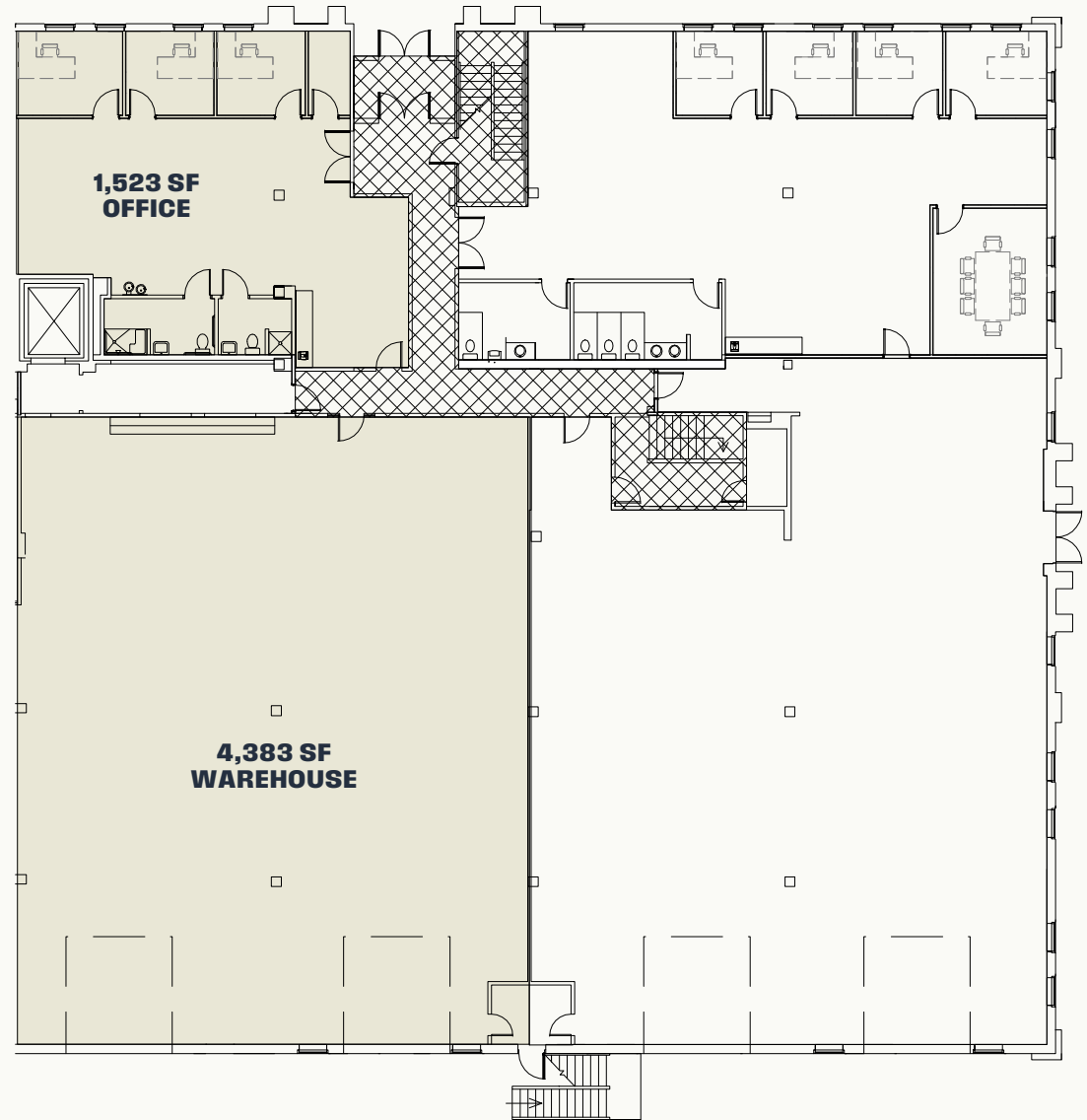
Floor 1

OFFICE + WAREHOUSE

**5,906 SF**  
Premises

**December 1, 2025**  
Possession

- Move-in-ready spec suite
- Highly efficient layout
- 14' clear height in warehouse
- Full HVAC in warehouse
- Oversized 12'x12' roll-up doors
- Interior elevator/stairwells
- Exterior building signage available





# ROYAL PARKWAY I

2501 PERIMETER PLACE DRIVE

# SUITE 200

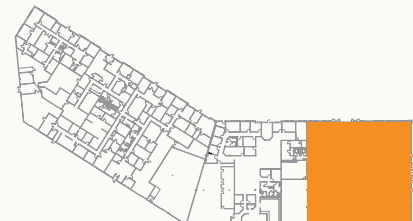
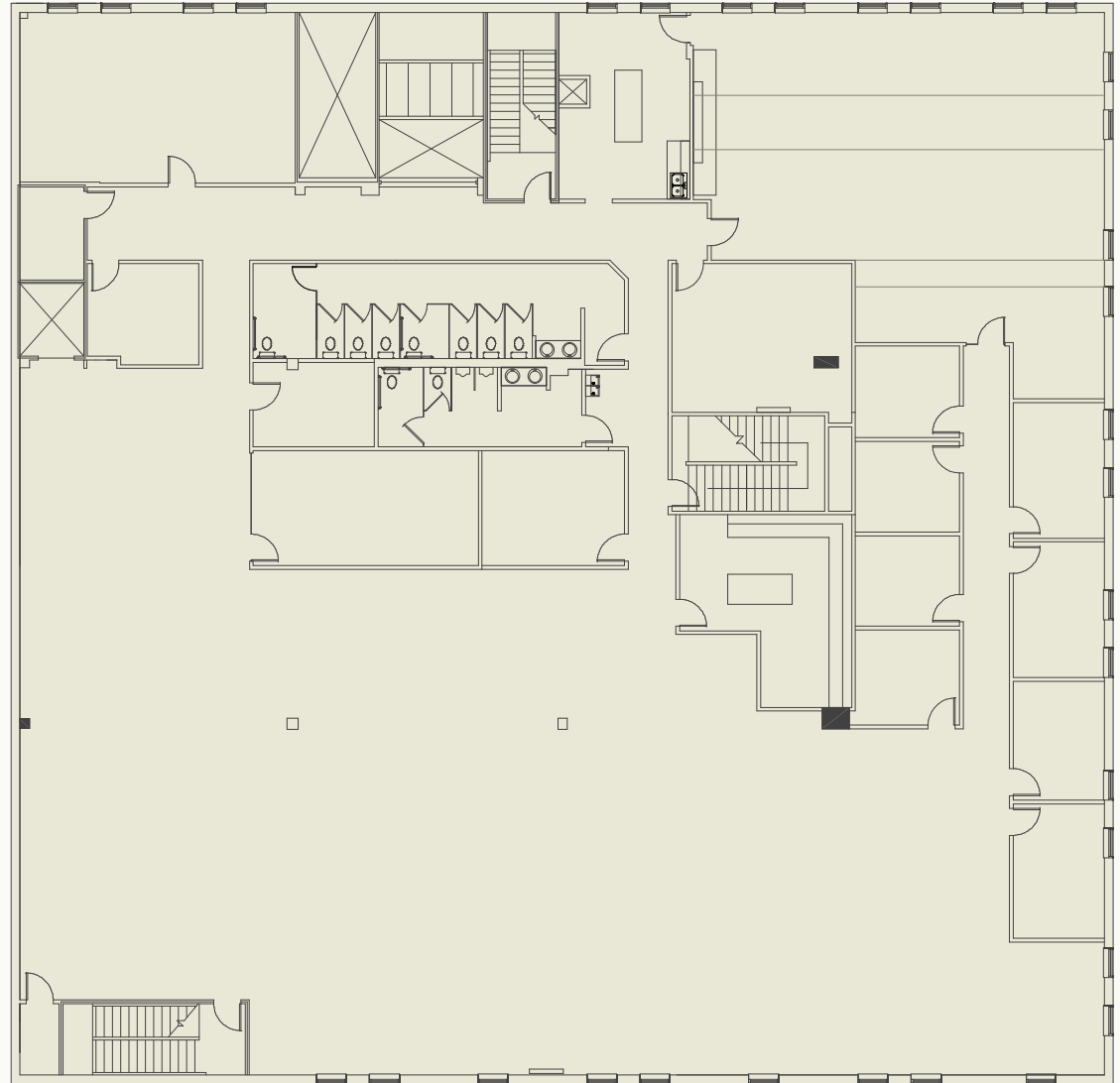
Floor 2

OFFICE

**14,915 SF**  
Premises

**Immediate**  
Possession

- High-quality, second-generation office space
- Large conference rooms, high-end breakroom with furniture
- Highly efficient layout
- Interior elevator/stairwells
- Exterior building signage available
- 518 total auto parking spaces





# ROYAL PARKWAY II

500-520 ROYAL PARKWAY

## SUITE 100

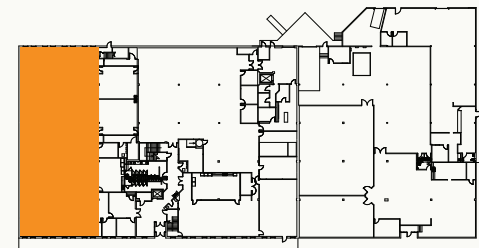
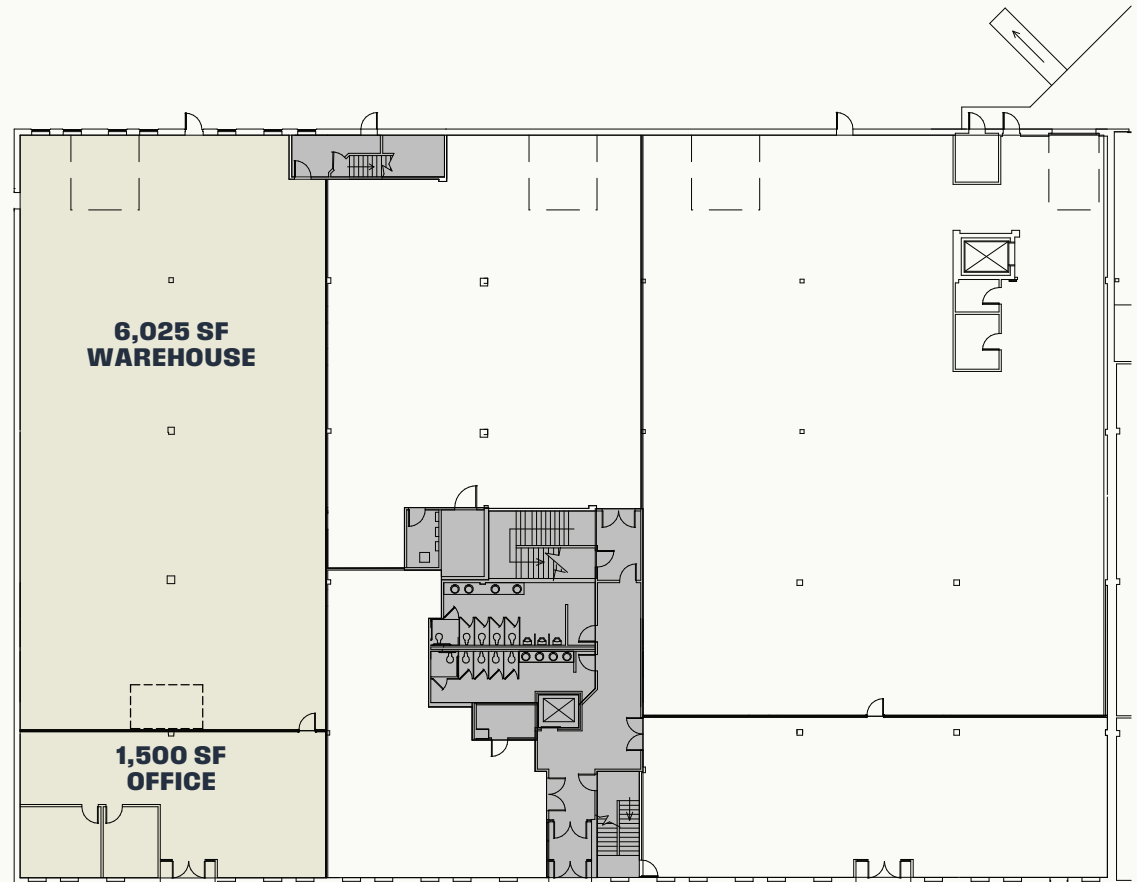
Floor 1

OFFICE + WAREHOUSE

**7,525 SF**  
Premises

**June 2026**  
Possession

- Move-in-ready spec suite
- Highly efficient layout
- 14' clear height in warehouse
- Full HVAC in warehouse
- Oversized 12'x12' roll-up doors
- Interior elevator/stairwells
- Exterior building signage available





# ROYAL PARKWAY II

500-520 ROYAL PARKWAY

## SUITE 105

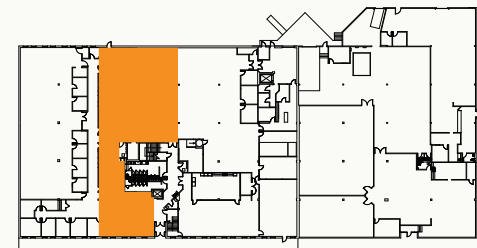
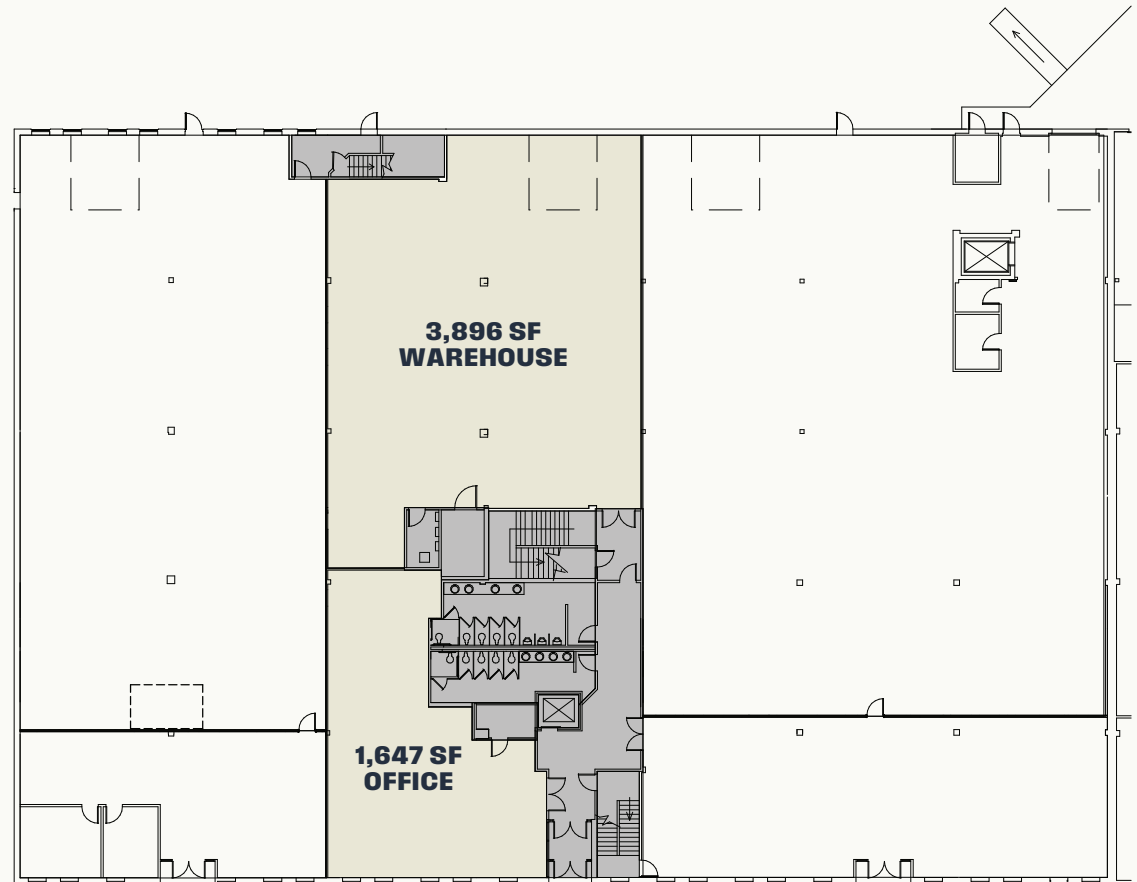
Floor 1

**OFFICE + WAREHOUSE**

**5,543 SF**  
Premises

**June 2026**  
Possession

- Move-in-ready spec suite
- Highly efficient layout
- 14' clear height in warehouse
- Full HVAC in warehouse
- Oversized 12'x12' roll-up doors
- Interior elevator/stairwells
- Exterior building signage available





# ROYAL PARKWAY II

500-520 ROYAL PARKWAY

## SUITE 110

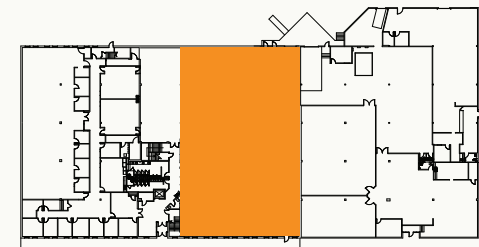
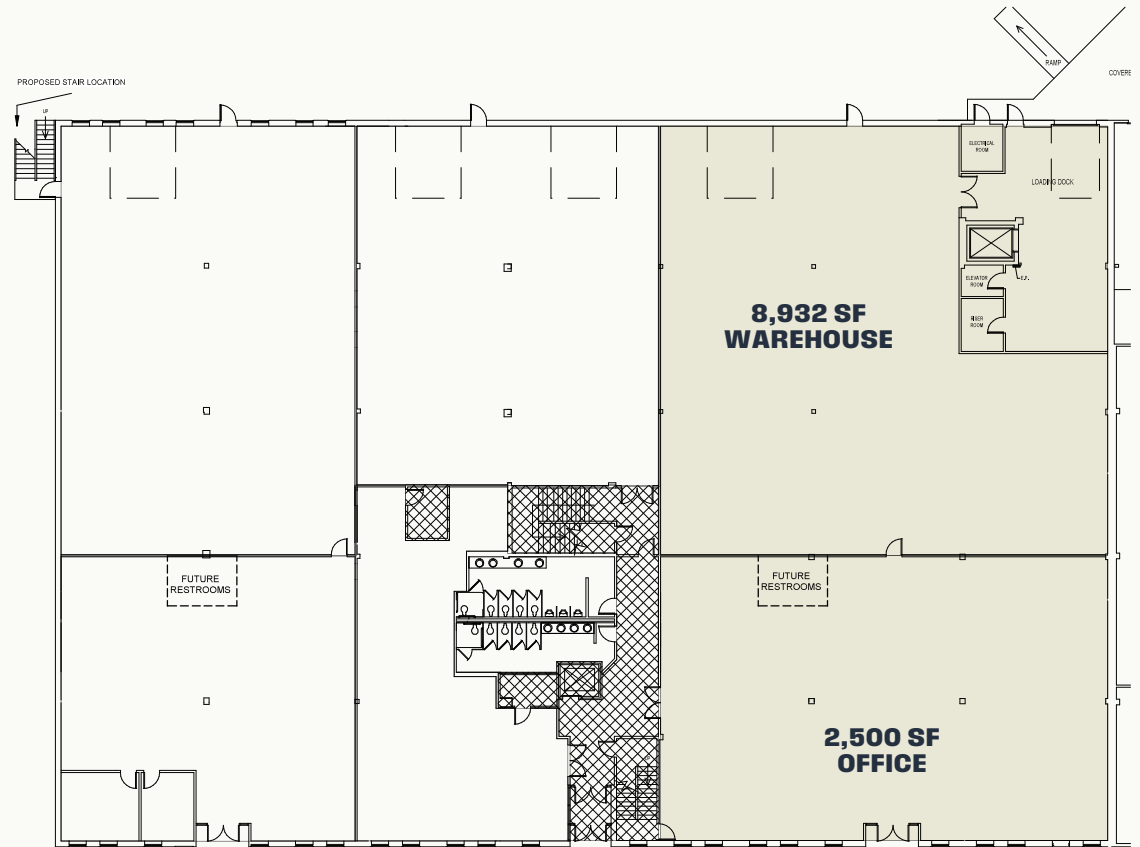
Floor 1

OFFICE + WAREHOUSE

**11,432 SF**  
Premises

**June 2026**  
Possession

- Move-in-ready spec suite
- Highly efficient layout
- 14' clear height in warehouse
- Full HVAC in warehouse
- Oversized 12'x12' roll-up doors
- One (1) dock-high door
- Exterior building signage available





# ROYAL PARKWAY II

500-520 ROYAL PARKWAY

# SUITE 200

Floor 2

OFFICE

**12,552 SF**  
Premises

**Immediate**  
Possession

- High-quality, second-generation office space
- Highly efficient layout
- Interior elevator/stairwells
- Exterior building signage available
- 518 total auto parking spaces

