

# 13390 Capital Street

Oak Park, MI

9,000 SF Available on 1.13 Acres



## Contact Us

**Jake Ginster**  
Senior Associate  
+1 248 633 6119  
[jake.ginster@cbre.com](mailto:jake.ginster@cbre.com)

**Charles M. Ginster**  
Senior Vice President  
+1 248 760 2439  
[chuck.ginster@cbre.com](mailto:chuck.ginster@cbre.com)

**Joe Kemp**  
Vice President  
+1 248 404 7257  
[joe.kemp@cbre.com](mailto:joe.kemp@cbre.com)

9,000 SF AVAILABLE

13390 Capital Street, Oak Park, MI

For Lease

# Aerial



## Comments

- Close Proximity to I-696, M-10, and Southfield Freeway
- Rare Freestanding Industrial Building Located off Coolidge Hwy & Capital St
- Heavy Power, Clear Span Warehouse, and Five (5) Ton Crane Available
- Fenced, Gated, and Secured Lot

9,000 SF AVAILABLE

13390 Capital Street, Oak Park, MI

For Lease

# Photos



9,000 SF AVAILABLE

13390 Capital Street, Oak Park, MI

For Lease

# Property Features

# 9,000

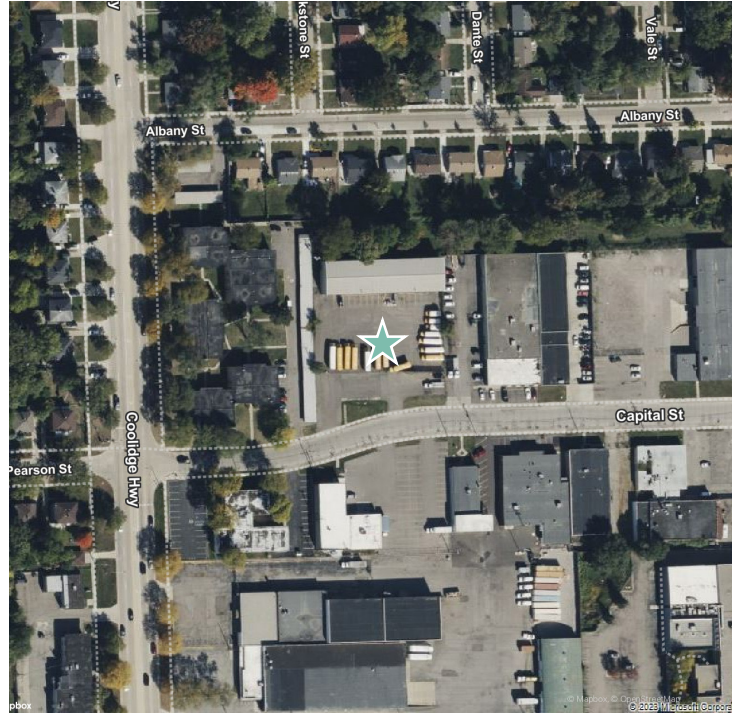
Square Footage

# 1.13

Acreage

# \$8.00/NNN

Lease Rate



<b>Year Built</b>	1959/ Renovated 1986	<b>Electrical Power</b>	Heavy
<b>Total Available</b>	9,000 SF	<b>Parking</b>	50 Free Surface
<b>Zoning</b>	(IF) Industrial Flex	<b>HVAC</b>	Office
<b>Acres</b>	1.13 Acres	<b>Truckwells</b>	None
<b>Construction</b>	Masonry	<b>Grade Level Doors</b>	Two (2)
<b>Crane</b>	5-Ton Overhead Crane	<b>Frontage</b>	200' off Capital St
<b>Ceiling Height</b>	21'10" Side Truss 23'3" Center Truss	<b>Lease Rate</b>	\$8.00/NNN

## Contact Us

**Jake Ginster**  
Senior Associate  
+1 248 633 6119  
jake.ginster@cbre.com

**Charles M. Ginster**  
Senior Vice President  
+1 248 760 2439  
chuck.ginster@cbre.com

**Joe Kemp**  
Vice President  
+1 248 404 7257  
joe.kemp@cbre.com

© 2024 CBRE, Inc. All rights reserved. This information has been obtained from sources believed reliable but has not been verified for accuracy or completeness. CBRE, Inc. makes no guarantee, representation or warranty and accepts no responsibility or liability as to the accuracy, completeness, or reliability of the information contained herein. You should conduct a careful, independent investigation of the property and verify all information. Any reliance on this information is solely at your own risk.