

For Sublease

CBRE

# One Galleria Tower

13355 Noel Rd  
Dallas, TX 75240

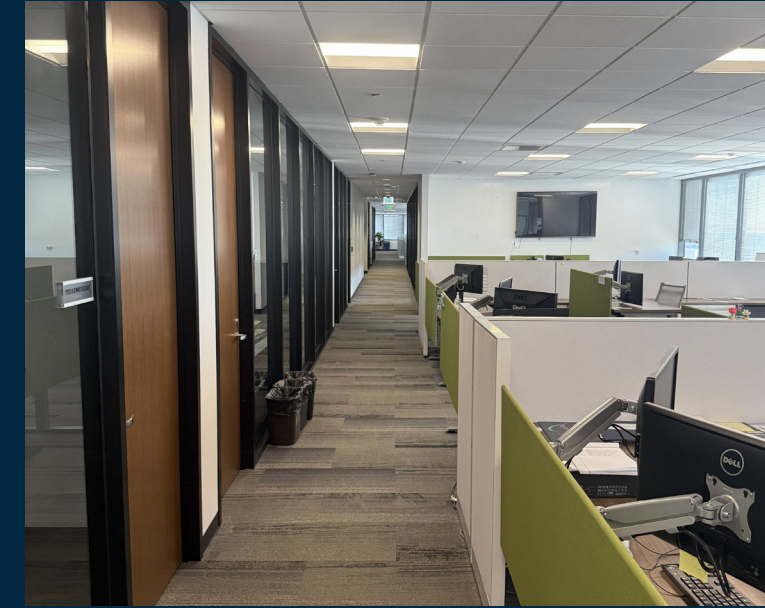
14,988 SF FULLY FURNISHED OFFICE SUBLEASE



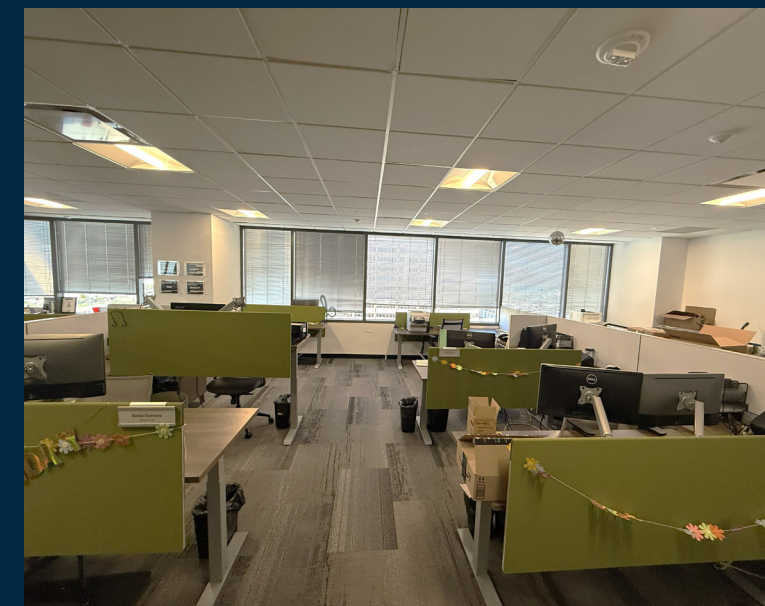
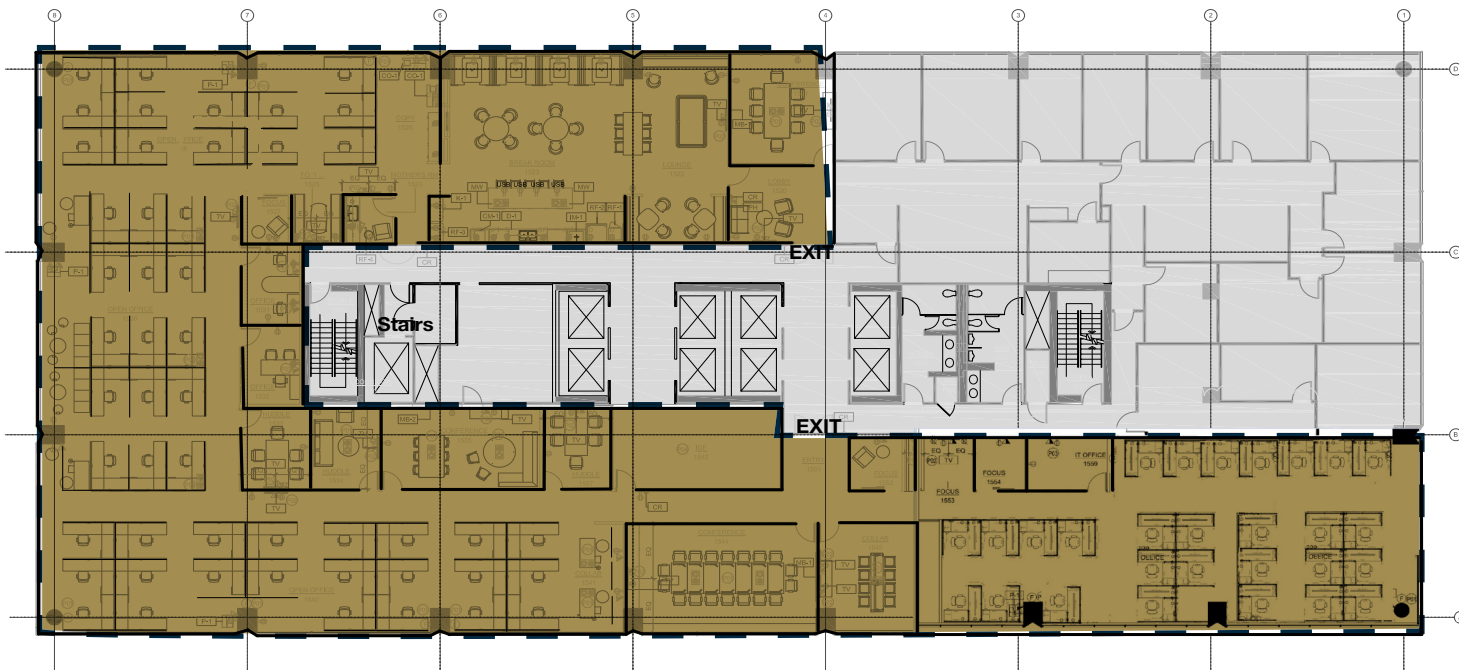
# Sublease Features

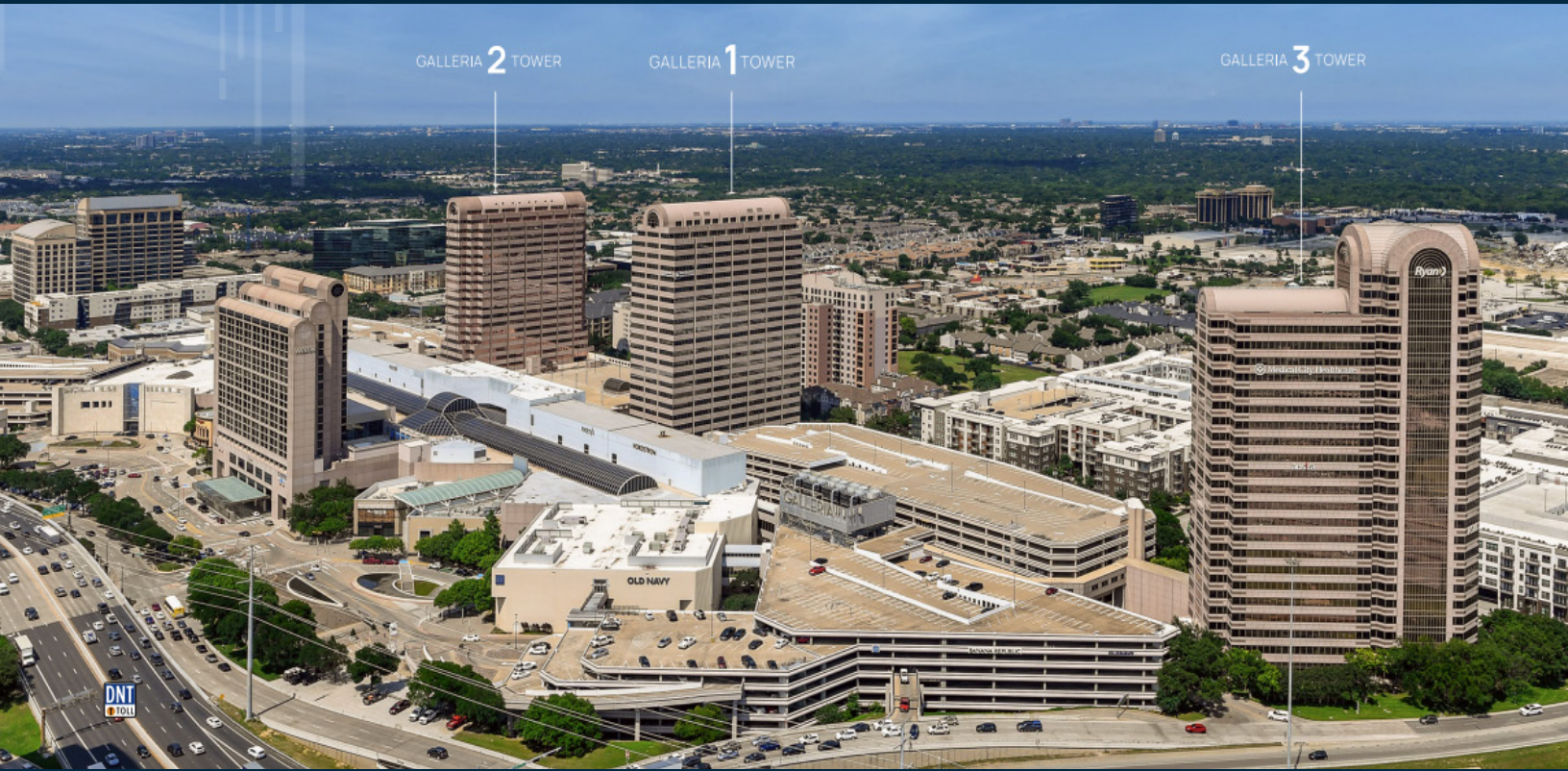
For Sublease

- + Suite 1500 | 14,988 SF
- + **Below Market Rate: \$29.50/SF NNN**
- + **NNN \$15.58/SF**
- + Term thru March 30, 2029
- + Fully Furnished
- + Elevator Exposure
- + Multiple Conference Rooms
- + Large Kitchen & Break Area
- + Private Offices
- + Workstations



## FLOORPLAN 15th Floor | Ste 1500





**ONE GALLERIA TOWER** is the centerpiece of the Dallas Galleria Office Towers linking the trio together and is integral part of the Dallas Galleria Office Towers, The Office Towers are connected to the Galleria Mall and are in close proximity to several prominent hotels and share many amenities including on-site security, concierge, deck parking, on-site management, conference center, fitness center, banking, day care center, and much more.

In 2025, One Galleria has been completely transformed with new conference centers, lounges, and event spaces. In addition to the exciting new amenities and common areas, the exterior drive courts and facades have been enhanced plus new outdoor spaces with landscaping, walking paths and meeting areas have been added.

## CONTACT US

**DANIEL PRESCOTT III**

Senior Associate  
+1 214 707 3746  
daniel.prescott@cbre.com

**DOUG CARIGNAN**

Executive Vice President  
+1 214 707 5398  
doug.carignan@cbre.com

© 2025 CBRE, Inc. All rights reserved. This information has been obtained from sources believed reliable, but has not been verified for accuracy or completeness. You should conduct a careful, independent investigation of the property and verify all information. Any reliance on this information is solely at your own risk. CBRE and the CBRE logo are service marks of CBRE, Inc. All other marks displayed on this document are the property of their respective owners, and the use of such logos does not imply any affiliation with or endorsement of CBRE. Photos herein are the property of their respective owners. Use of these images without the express written consent of the owner is prohibited.