

11217 Lakeview Ave

11217 Lakeview Ave
Lenexa, KS

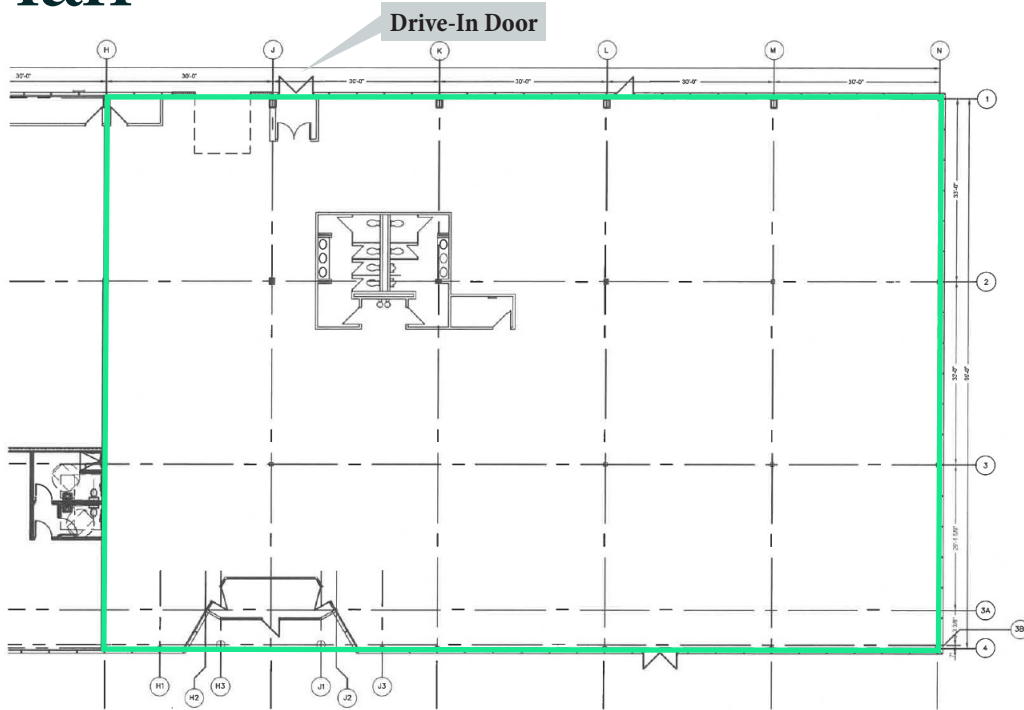


YOUR SIGN HERE

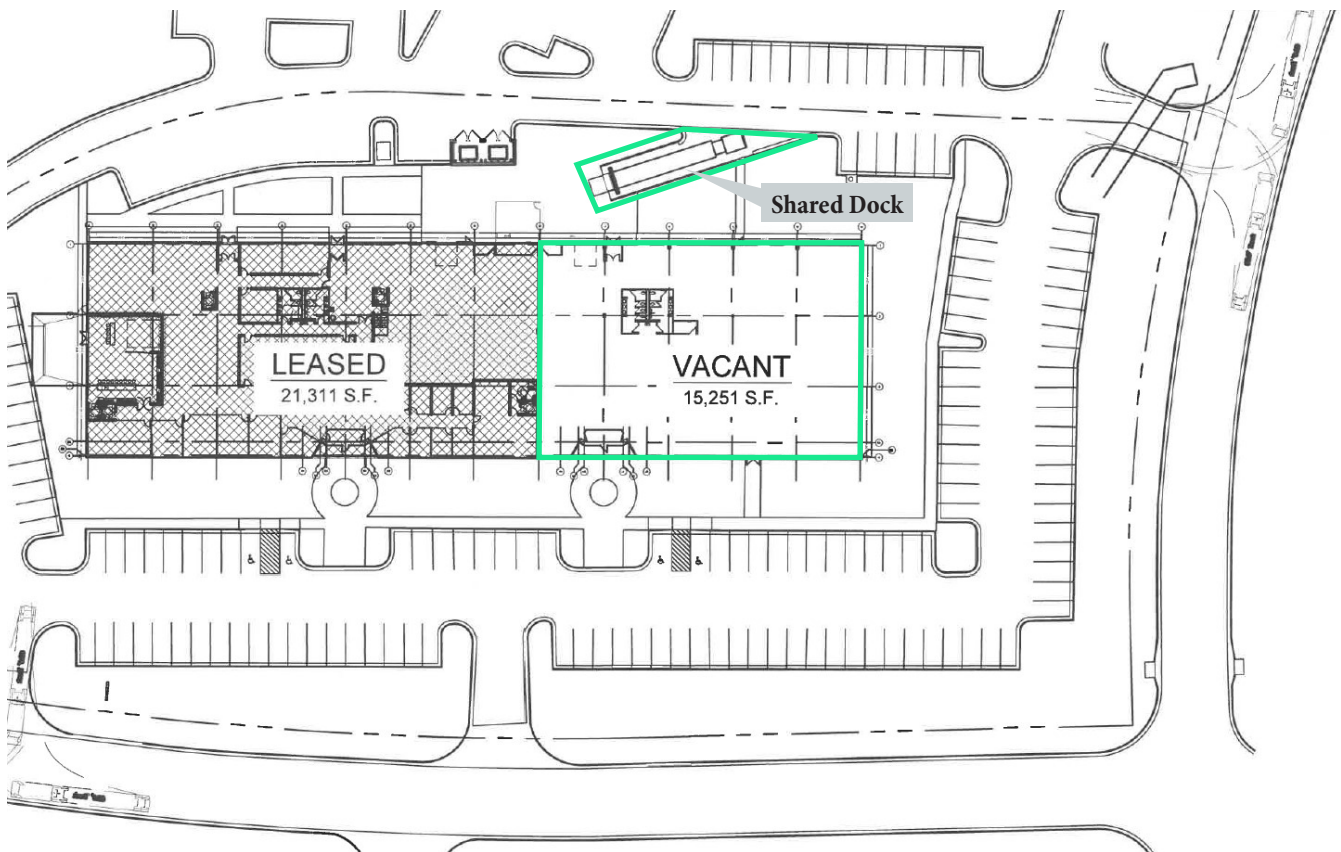
Property Highlights

- + 15,251+/- SF Total Available
- + Flex/Industrial space in shell condition
- + Build to Suit Office finish
- + Shared dock platform
- + 1 drive-in door
- + Full HVAC building
- + Wet sprinklers
- + Completely Renovated building
- + New roof, new HVAC, and new parking lot
- + Monument and building signage available
- + Premium Johnson County location
- + LL offering TI allowance for tenant finish
- + New LED lights in parking lot
- + Lease Rate: \$13.65 PSF NNN
 - Taxes: \$3.60 PSF
 - Insurance: \$0.56 PSF
 - CAM: TBD
 - Total Nets: \$4.16 PSF

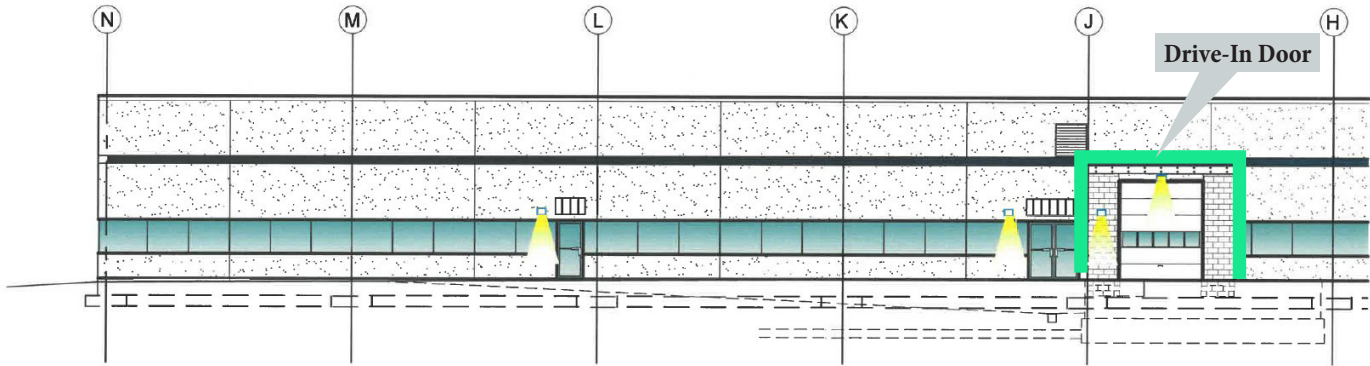
Floor Plan



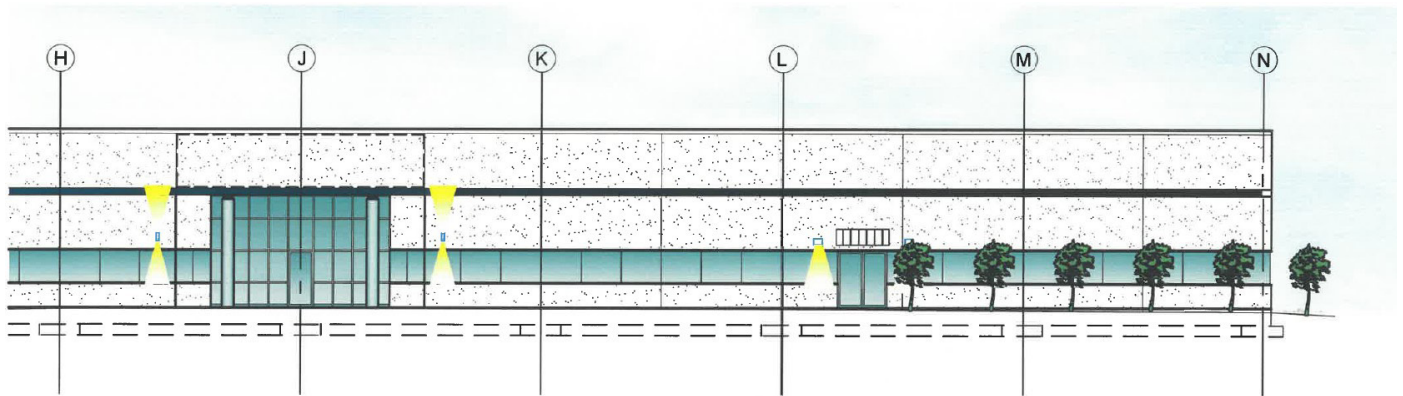
Site Plan



East Elevation



West Elevation



Contact Us

Ben Whetstone
Senior Associate
+1 816 968 5809
ben.whetstone@cbre.com

Mike Mitchelson, CCIM, SIOR
Executive Vice President
+1 816 968 5807
mike.mitchelson@cbre.com

© 2025 CBRE, Inc. All rights reserved. This information has been obtained from sources believed reliable, but has not been verified for accuracy or completeness. You should conduct a careful, independent investigation of the property and verify all information. Any reliance on this information is solely at your own risk. CBRE and the CBRE logo are service marks of CBRE, Inc. All other marks displayed on this document are the property of their respective owners, and the use of such logos does not imply any affiliation with or endorsement of CBRE. Photos herein are the property of their respective owners. Use of these images without the express written consent of the owner is prohibited.