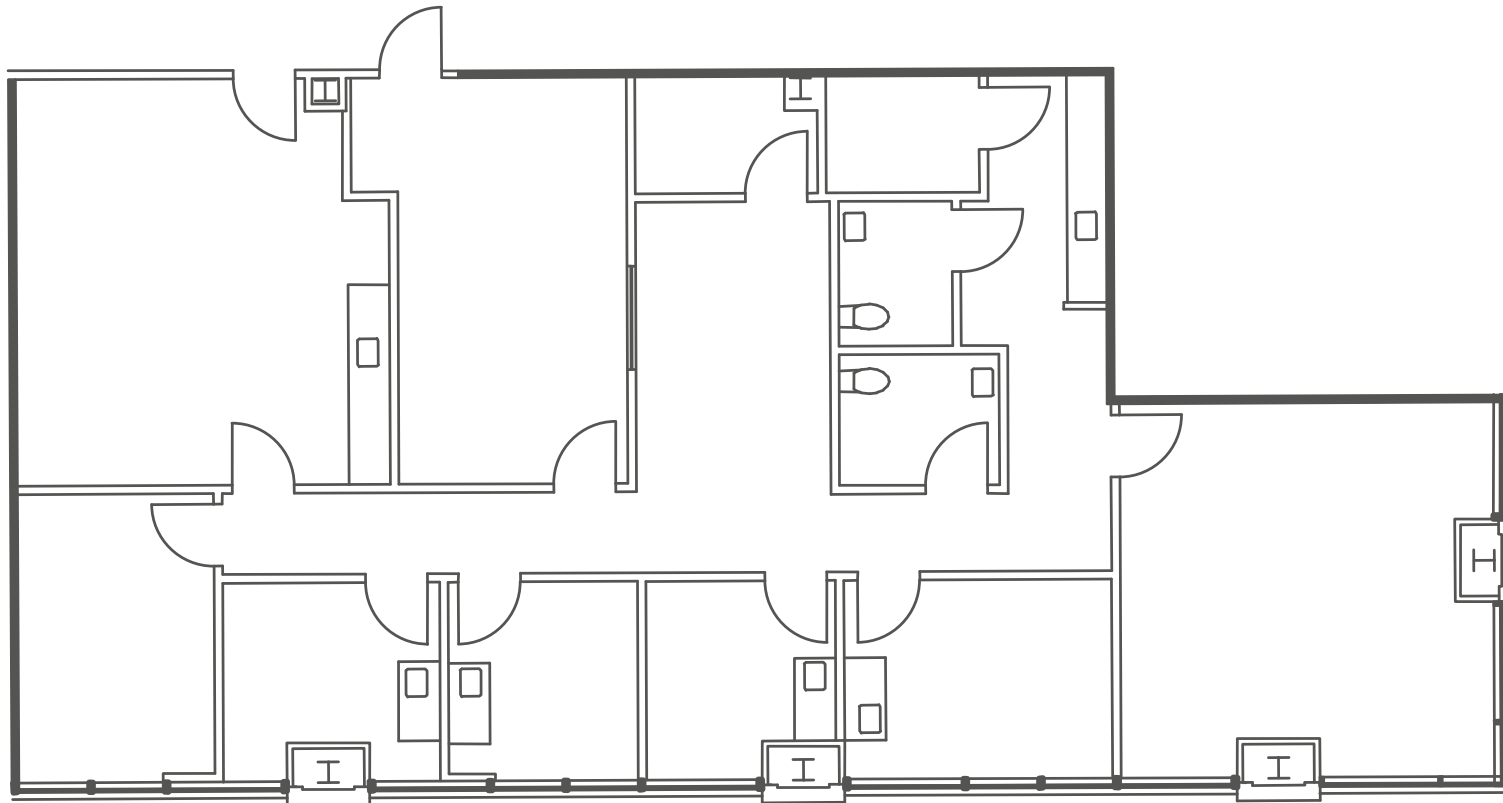


# Imperial Medical Center

1111-1211 Highway 6  
Sugar Land, TX 77478  
[www.cbre.com/properties](http://www.cbre.com/properties)

Suite 135 - 2,840 RSF

Available 8/1/2027



## Contact Us

**Lane Kane**  
Vice President  
+1 904 305 7633  
[lane.kane@cbre.com](mailto:lane.kane@cbre.com)

**Pamela Sprouse**  
Vice President  
+1 832 335 0277  
[pamela.sprouse@cbre.com](mailto:pamela.sprouse@cbre.com)

**Danielle Parsons**  
Associate  
+1 713 907 8905  
[danielle.parsons@cbre.com](mailto:danielle.parsons@cbre.com)

**Brandy Bellow Spinks**  
Executive Vice President  
+1 713 726 6100  
[brandy.bellow@cbre.com](mailto:brandy.bellow@cbre.com)

