

13159 Middletown Industrial Blvd.

Suite C, Louisville, KY 40223

www.cbre.com/louisville

3,600± SF Available | \$11.50/SF/YR, NNN



Property Highlights

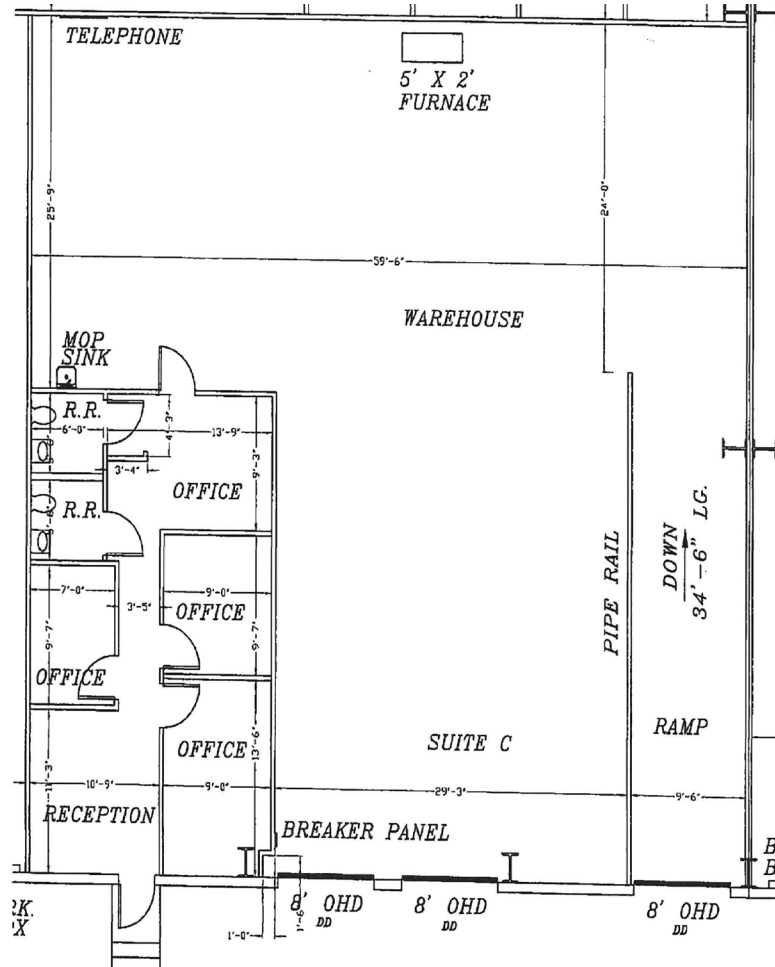
- 3,600± SF
- 635± SF office area
- (1) 4' dock door
- (2) box truck doors
- 22' clear height
- Zoned M2
- 2 restrooms
- Florescent lighting
- 2.0 miles from I-265
- Interstate visibility

Contact Us

Alex P. Grove
Vice President
+1 502 412 7655
alex.grove@cbre.com

Blake A. Scinta, CCIM
First Vice President
+1 502 412 7646
blake.scinta@cbre.com

Floor Plan



© 2026 CBRE, Inc. All rights reserved. This information has been obtained from sources believed reliable, but has not been verified for accuracy or completeness. You should conduct a careful, independent investigation of the property and verify all information. Any reliance on this information is solely at your own risk. CBRE and the CBRE logo are service marks of CBRE, Inc. All other marks displayed on this document are the property of their respective owners, and the use of such logos does not imply any affiliation with or endorsement of CBRE. Photos herein are the property of their respective owners. Use of these images without the express written consent of the owner is prohibited.