

1019 S. Quincy Avenue

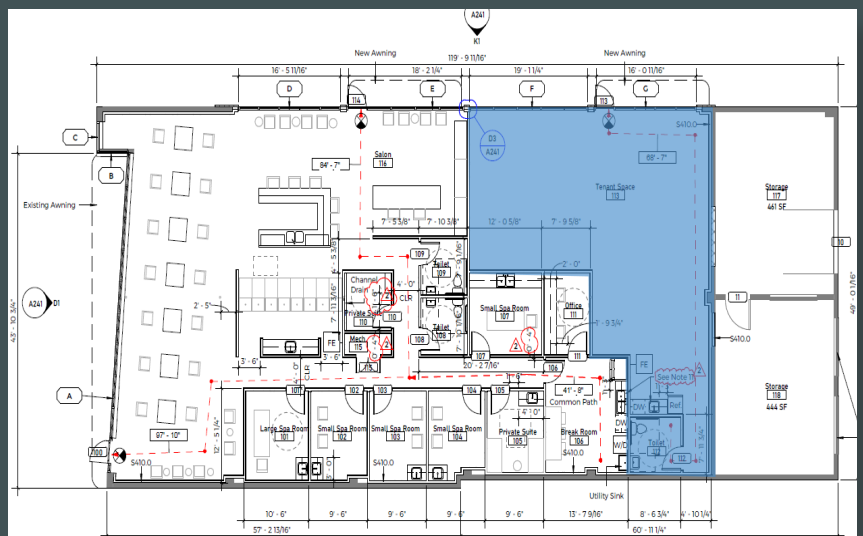
1019 S. Quincy Avenue
Tulsa, OK 74120



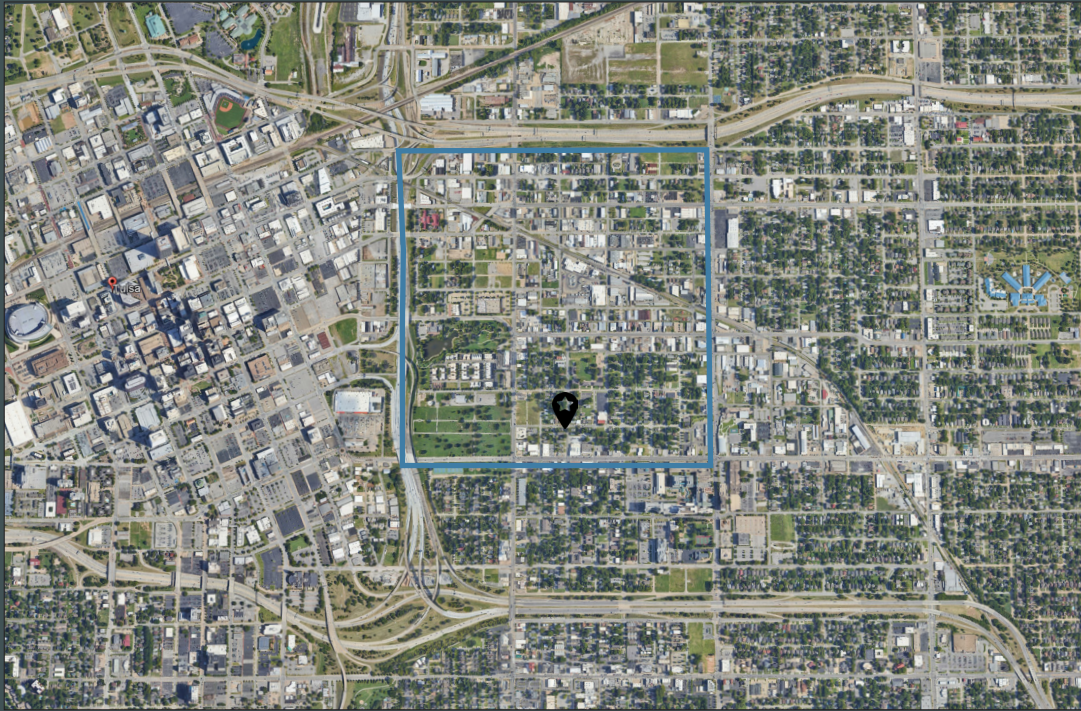
Property Highlights

- + Excellent Pearl District Location
- + ±1,241 Square Feet Available *
- + Signage Available
- + Parking Included
- + Zoned CH
- + Immediate Proximity to Restaurants & Retail
- + Close Highway Access

*Source: Architect



** A Licensee of CBRE, Inc. is a participant in the ownership of this property.**



Contact Us

Leslie Kirkpatrick Cornell, MBA

Senior Associate

+1 918 557 2231

leslie.kirkpatrick@cbre.com

© 2026 CBRE, Inc. All rights reserved. This information has been obtained from sources believed reliable, but has not been verified for accuracy or completeness. You should conduct a careful, independent investigation of the property and verify all information. Any reliance on this information is solely at your own risk. CBRE and the CBRE logo are service marks of CBRE, Inc. All other marks displayed on this document are the property of their respective owners, and the use of such logos does not imply any affiliation with or endorsement of CBRE. Photos herein are the property of their respective owners. Use of these images without the express written consent of the owner is prohibited.