

FOR LEASE

- ▶ BOUTIQUE BUILDING:
5,000 - 28,000 SF available
- ▶ FREE ON-SITE PARKING:
2.4 free spaces per 1,000 SF leased
- ▶ PRIME VISIBILITY:
Exterior signage available
- ▶ GROUND FLOOR ACCESS:
Private street level building entrance
- ▶ Terrific access to Oakland and CBD via
Birmingham Bridge
- ▶ Walkable to South Side eating, drinking,
attractions, and riverfront trail
- ▶ Creative space with an outdoor balcony
- ▶ Professional ownership and property
management

CBRE

CONTACT:

Jeremy Z. Kronman, CCIM, SIOR
Vice Chairman
+1 412 394 9848
jeremy.kronman@cbre.com

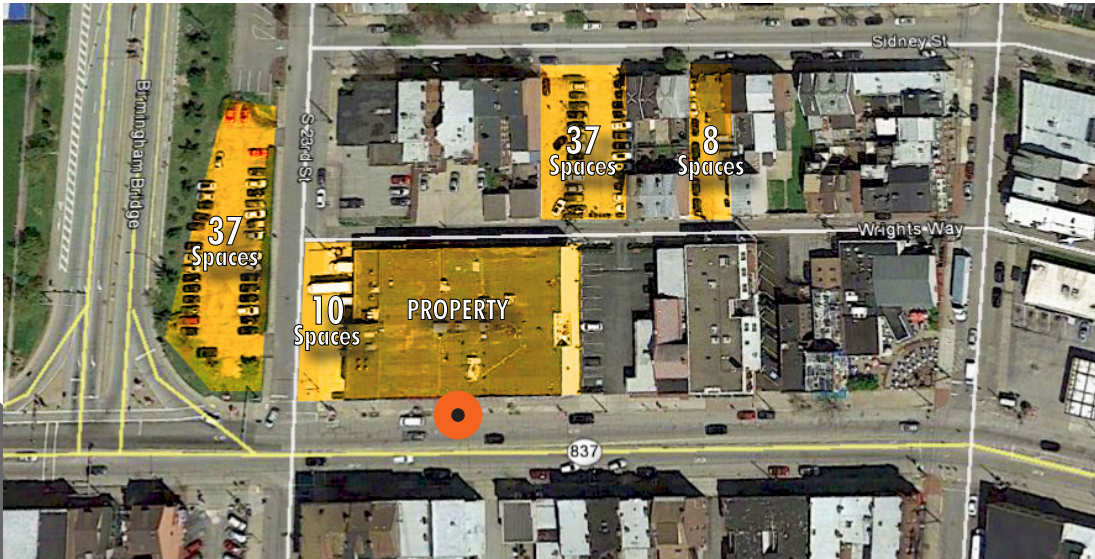
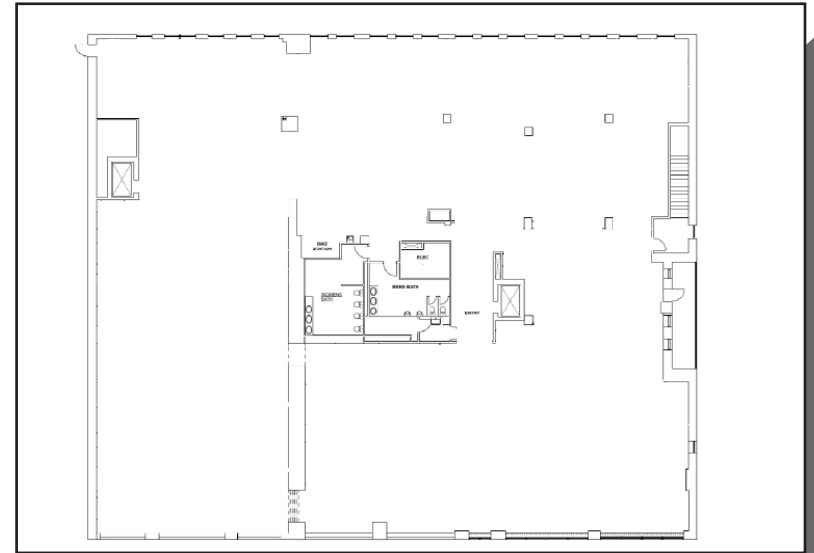
Andrew B. Miller, CCIM
Senior Vice President
+1 412 394 9807
andrew.miller@cbre.com

2305 E CARSON STREET
PITTSBURGH, PA 15203





LARGE FLOORPLATE, OPEN LAYOUT 5,000 - 28,000 SF Available



© 2025 CBRE, Inc. All rights reserved. This information has been obtained from sources believed reliable but has not been verified for accuracy or completeness. CBRE, Inc. makes no guarantee, representation or warranty and accepts no responsibility or liability as to the accuracy, completeness, or reliability of the information contained herein. You should conduct a careful, independent investigation of the property and verify all information. Any reliance on this information is solely at your own risk. CBRE and the CBRE logo are service marks of CBRE, Inc. All other marks displayed on this document are the property of their respective owners, and the use of such marks does not imply any affiliation with or endorsement of CBRE. Photos herein are the property of their respective owners. Use of these images without the express written consent of the owner is prohibited.