

# EVOLVE

## OFFICE PARK

15210 & 15220 South 50th St  
Phoenix, Arizona

Suite 120  
16,512 SF

15210  
Bldg.

For more information, contact:

**Mark Gustin, SIOR, CCIM**

+1 602 430 0605

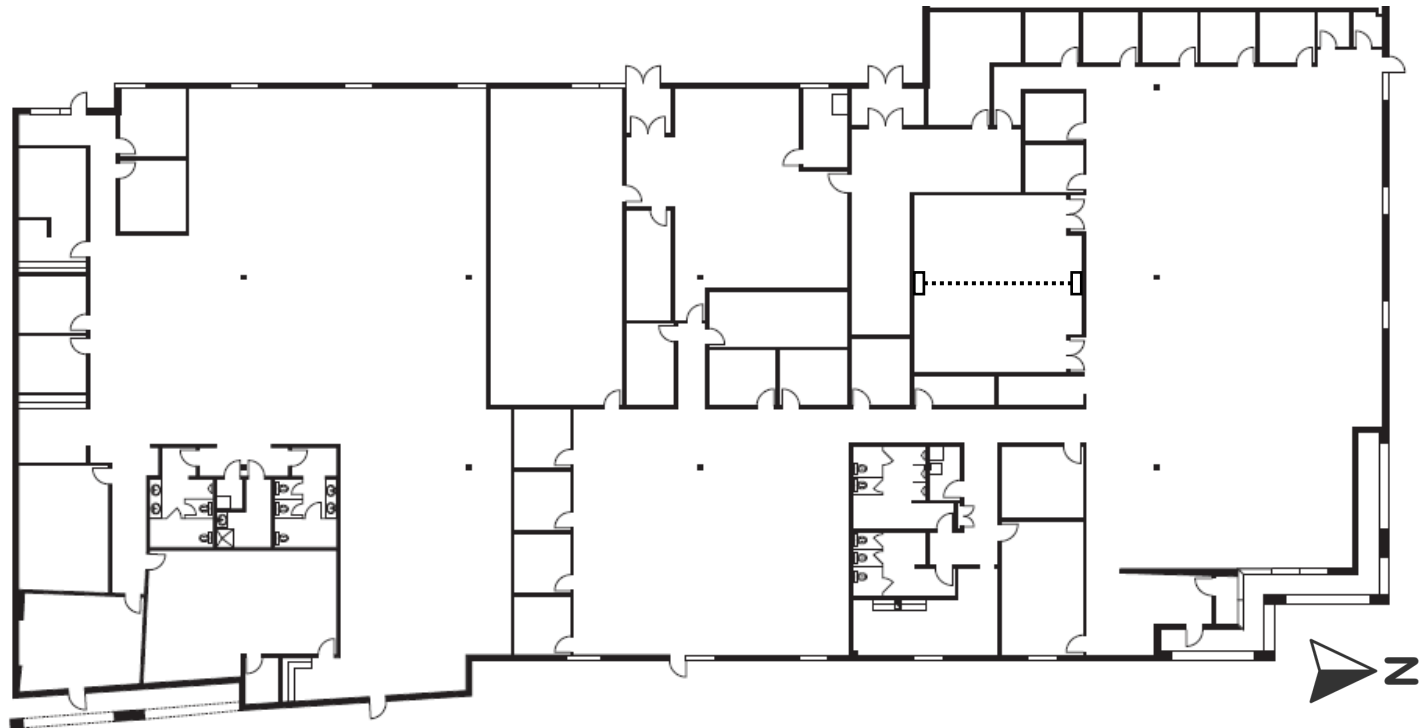
[mark.gustin@cbre.com](mailto:mark.gustin@cbre.com)

**Jimmy Cornish**

+1 602 980 8844

[jimmy.cornish@cbre.com](mailto:jimmy.cornish@cbre.com)

**CBRE**



© 2025 CBRE, Inc. All rights reserved. This information has been obtained from sources believed reliable but has not been verified for accuracy or completeness. CBRE, Inc. makes no guarantee, representation or warranty and accepts no responsibility or liability as to the accuracy, completeness, or reliability of the information contained herein. You should conduct a careful, independent investigation of the property and verify all information. Any reliance on this information is solely at your own risk.