

FOR LEASE

MIDLAND BUILDING

250

EAST BROAD STREET

Columbus, OH 43215



PROPERTY HIGHLIGHTS

- + 2,000 SF to 12,000 SF available
- + \$19.50 PSF, Full Service
- + Immediate availability
- + High quality turnkey allowances provided
- + 4/1,000 parking ratio
- + Covered parking attached with additional abundant surface parking
- + Prestigious downtown address
- + Building conference center
- + Easy access to major roadways
- + Less than 15 minutes to Port Columbus International Airport
- + Workout facility with women's and men's showers
- + On-site management



PROPERTY DESCRIPTION

Ideally situated on the corner of 5th St and E Broad St, the Midland Building offers multiple turnkey suites and a variety of on-site and nearby amenities. This prime downtown office space is only a 5 minute walk from the iconic Capitol Square, Columbus Museum of Art, The Athletic Club of Columbus, and more.

www.cbre.us/columbus

CBRE

FOR LEASE MIDLAND BUILDING



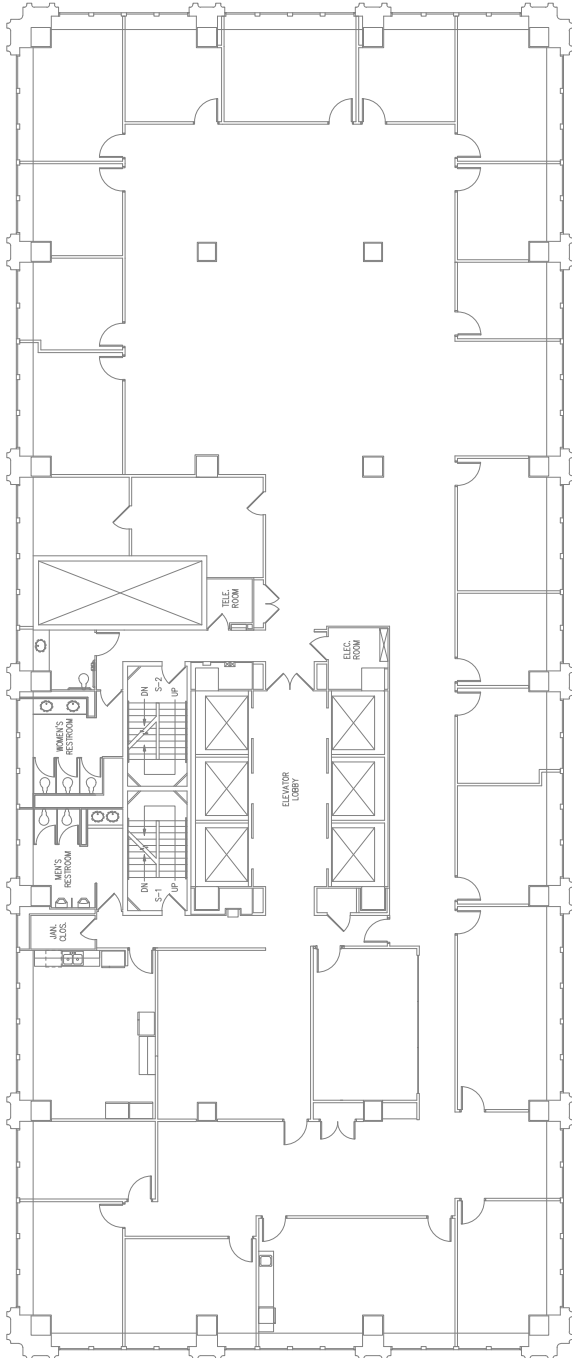
PROPERTY PHOTOS



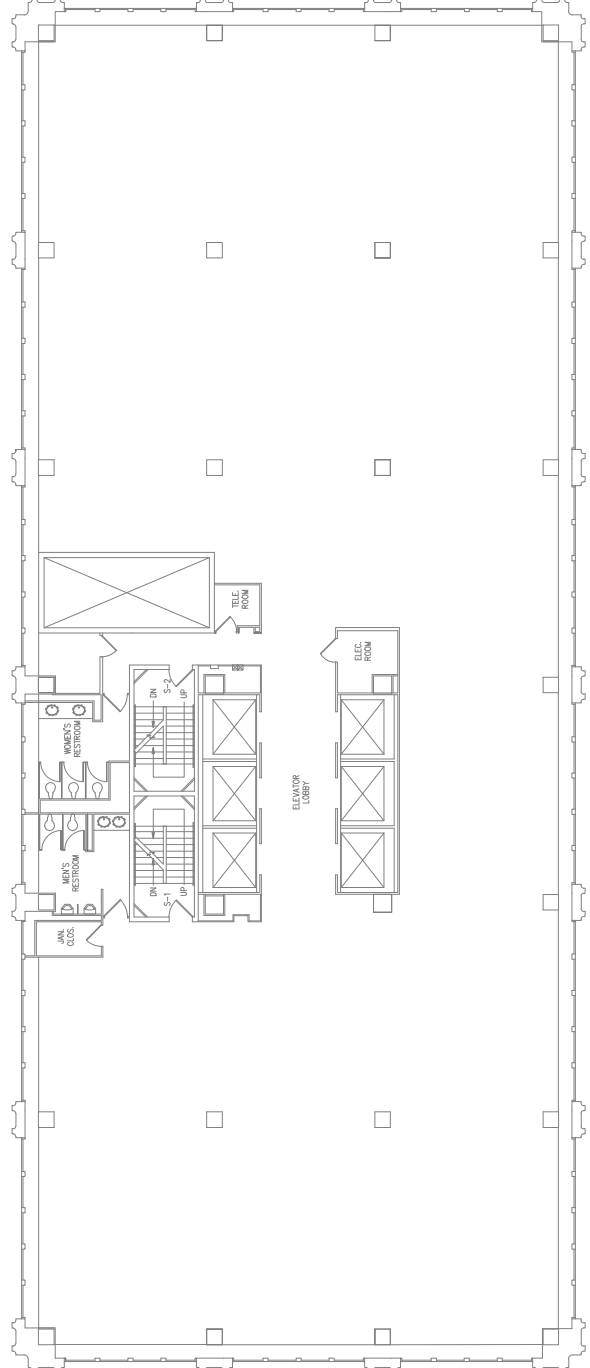


FLOOR PLANS

10TH FLOOR



15TH FLOOR



FOR LEASE MIDLAND BUILDING

250
EAST BROAD STREET
Columbus, OH 43215



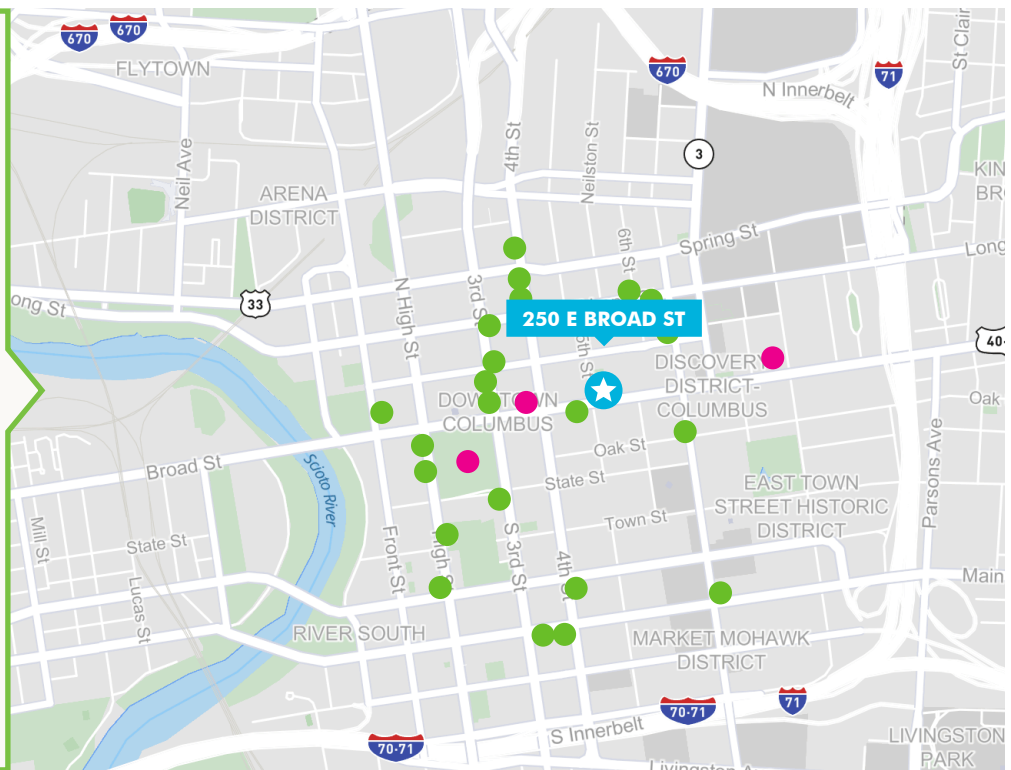
AMENITY MAP

NEARBY DINING

Jeff Ruby's • Elevator Brewing
Wolf's Ridge Brewing • The Keep
Potbelly Sandwich Shop • Zoup!
The Goat • Pins Mechanical
Jimmy Johns • Rishi Sushi
Subway • Domino's Pizza
Mitchell's Steakhouse • Poke Bros
SuperChef's • OH Pizza & Brew
Condado Tacos • Market 65
Dirty Frank's • Donatos Pizza
Pecan Penny's • The Walrus

NEARBY POINTS OF INTEREST

Capitol Square
The Athletic Club of Columbus
Columbus Museum of Art



CONTACT US

GREG THOMAS

Senior Vice President
+1 614 430 5057
greg.thomas@cbre.com

© 2020 CBRE, Inc. All rights reserved. This information has been obtained from sources believed reliable, but has not been verified for accuracy or completeness. You should conduct a careful, independent investigation of the property and verify all information. Any reliance on this information is solely at your own risk. CBRE and the CBRE logo are service marks of CBRE, Inc. All other marks displayed on this document are the property of their respective owners, and the use of such logos does not imply any affiliation with or endorsement of CBRE. Photos herein are the property of their respective owners. Use of these images without the express written consent of the owner is prohibited.

www.cbre.us/columbus

CBRE