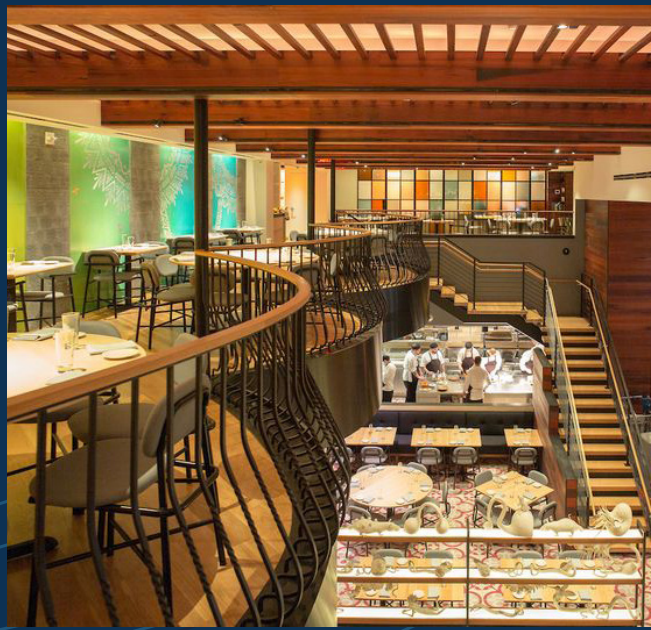
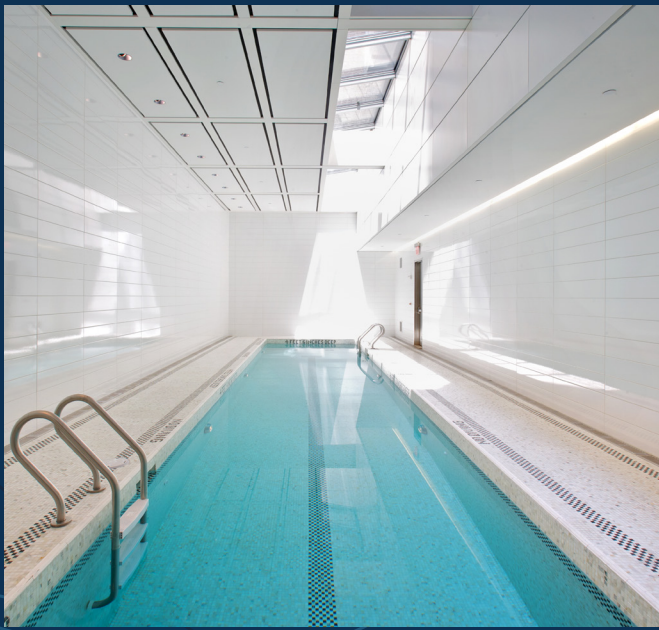




CBRE

510
MADISON
avenue

bxp Boston Properties



BUILDING FEATURES

- Elite financial services tenant roster
- 6,500 square-foot garden and furnished terrace shared amenity
- Tenant-exclusive health club with a lap pool powered by **THE WRIGHT FIT**
- World-class retail including the brand new *Empellón* restaurant by Chef Alex Stupak

PARTIAL 10TH FLOOR

PREMISES

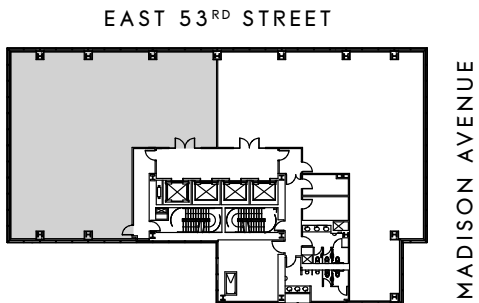
Partial 10TH Floor - 5,737 RSF

POSSESSION

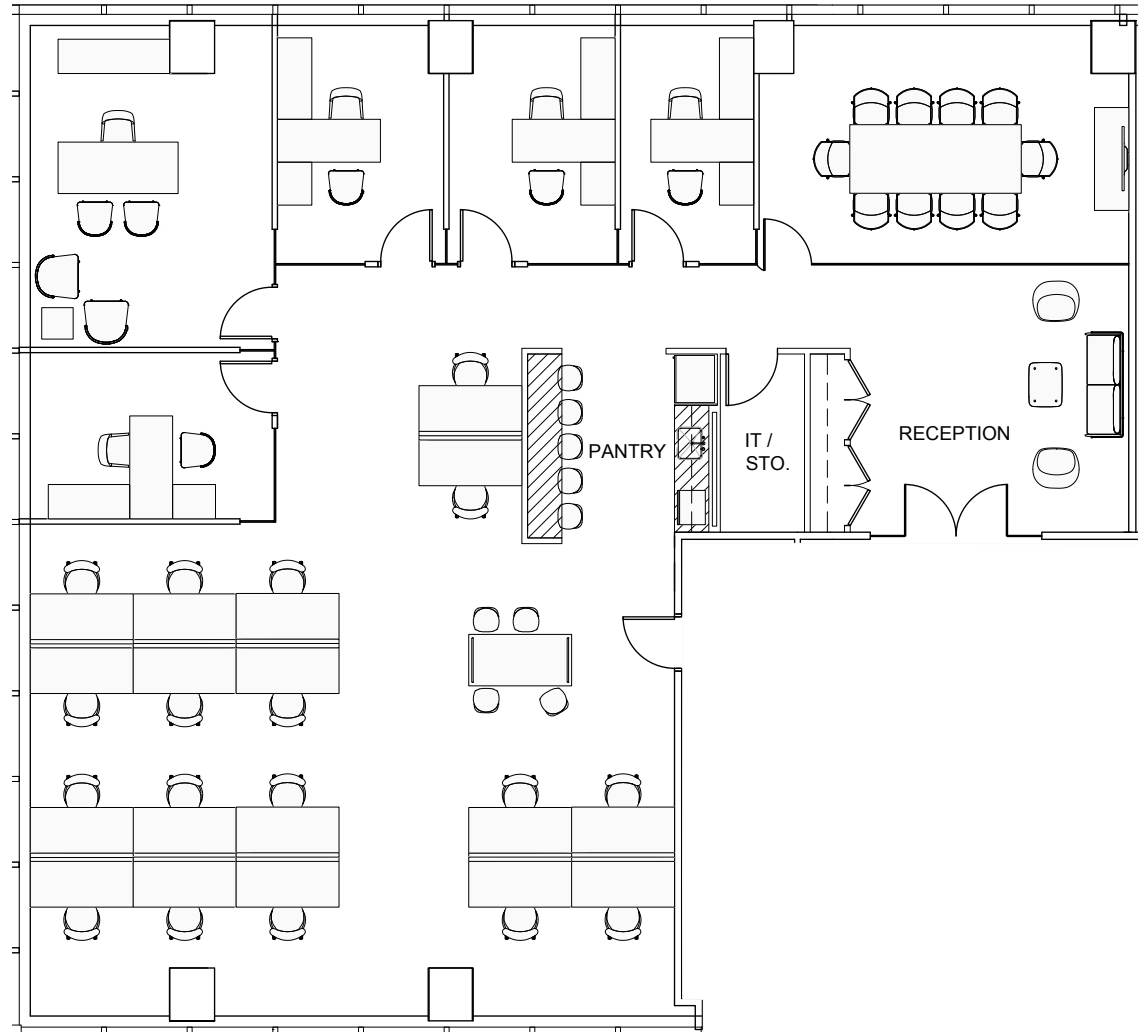
April 2020

SPACE FEATURES

- 10-foot finished ceilings with floor-to-ceiling windows
- Tremendous light and air
- Column-free floor plate
- Unit currently being renovated per the floor plan with brand new, high-end finishes. Work estimated to be complete April 2020.



FLOOR PLAN





510
MA
DIS
ON
avenue

PETER TURCHIN
+1 212 984 8364
peter.turchin@cbre.com

CHRISTIE HARLE
+1 212 984 8389
christie.harle@cbre.com

CAROLINE MERCK
+1 212 984 8336
caroline.merck@cbre.com

ARKADY SMOLYANSKY
+1 212 984 8355
arkady.smolyansky@cbre.com

CBRE
bxp Boston
Properties

© 2019 CBRE, Inc. All rights reserved. This information has been obtained from sources believed reliable, but has not been verified for accuracy or completeness. You should conduct a careful, independent investigation of the property and verify all information. Any reliance on this information is solely at your own risk. CBRE and the CBRE logo are service marks of CBRE, Inc. All other marks displayed on this document are the property of their respective owners, and the use of such logos does not imply any affiliation with or endorsement of CBRE.