

SAN FRANCISCO'S PREMIER CLASS A OFFICE BUILDING

ONE CALIFORNIA

BUILDING FEATURES

- 32-story, ±485,000 SF premier Class A office building
- Renovated lobby and plaza
- LEED Gold certified building
- On-site parking
- 24-hour on-site security
- Locker room & showers
- Efficient destination dispatch elevator system
- Direct access to BART, Muni and Cable Car
- Secured bike facility with repair station

AVAILABLE SPACES

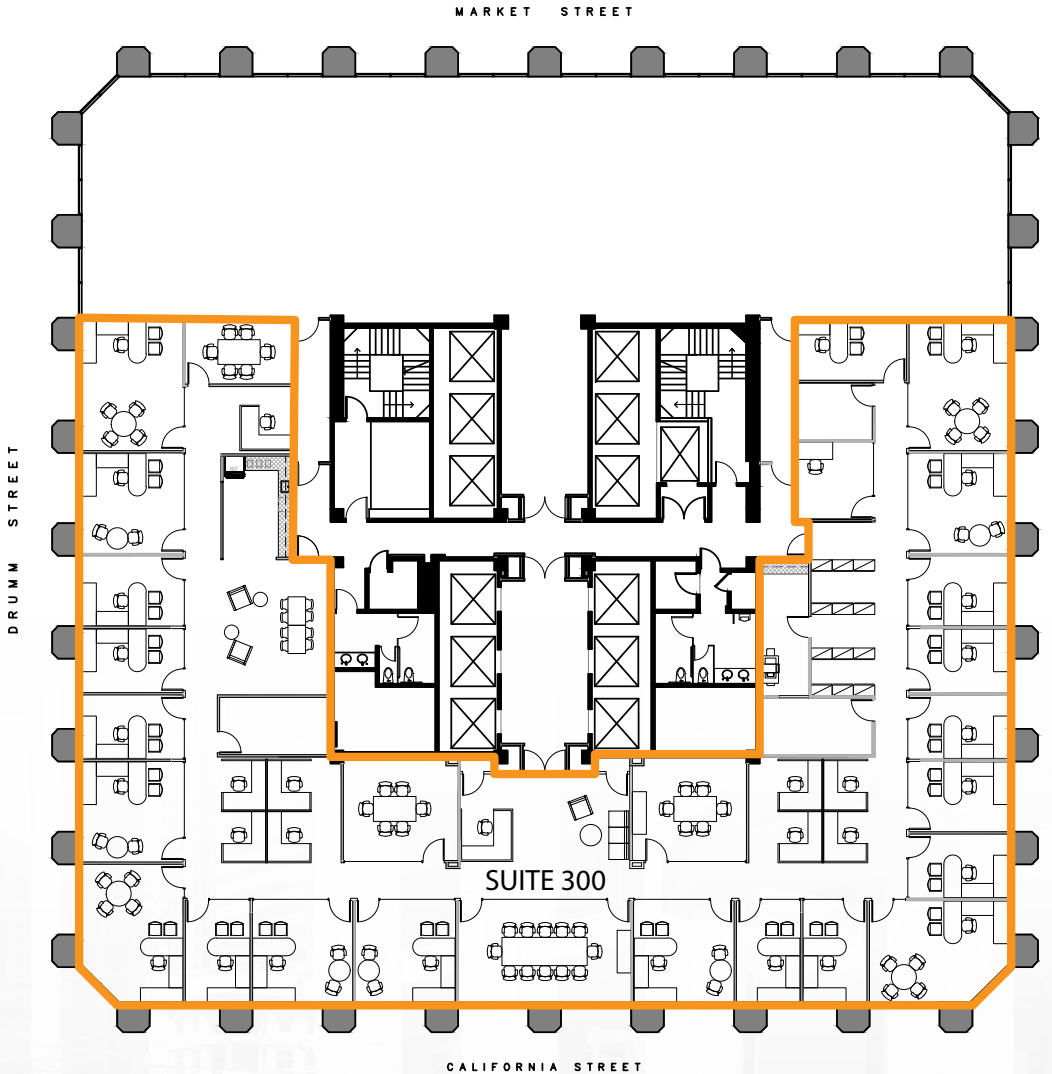
SUITE	~RSF	AVAILABLE	COMMENTS	TOUR
300	10,373	Now	Double door entry, 23 private offices, 4 conference rooms, open area for 9 workstations, break area, lounge, reception	
1800	15,958	8/1/22	Stunning bay and city views. Private office intensive with 25 offices, 4 conference rooms, boardroom, spacious lunchroom, 2 workrooms, 2 storage rooms, open area, double door entry	
1920	8,185	8/1/22	Private office intensive with 17 perimeter offices, 3 meeting rooms, kitchen, stunning bay and city views.	
2300	16,802	11/1/22	Full floor opportunity with spectacular views of the bay and city. Open area for ~120 workstations, 8 conference rooms, boardroom, 2 huddle rooms, 5 phone rooms, large breakroom, 3 lounge areas	

ONE CALIFORNIA



VIEW VIRTUAL TOUR

SUITE 300

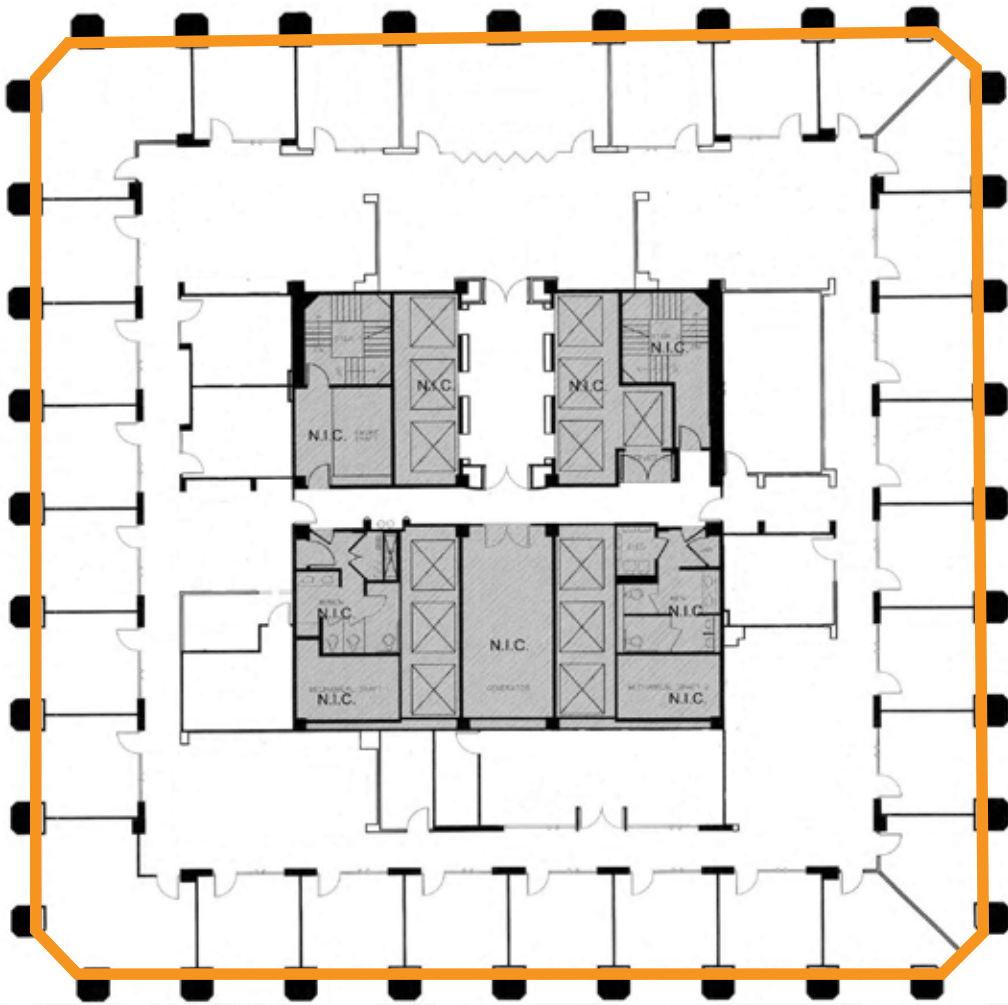


HIGHLIGHTS

- Double door entry
- 23 private offices
- 4 conference rooms
- Open area for 9 workstations
- Break area
- Lounge
- Reception area
- Available now

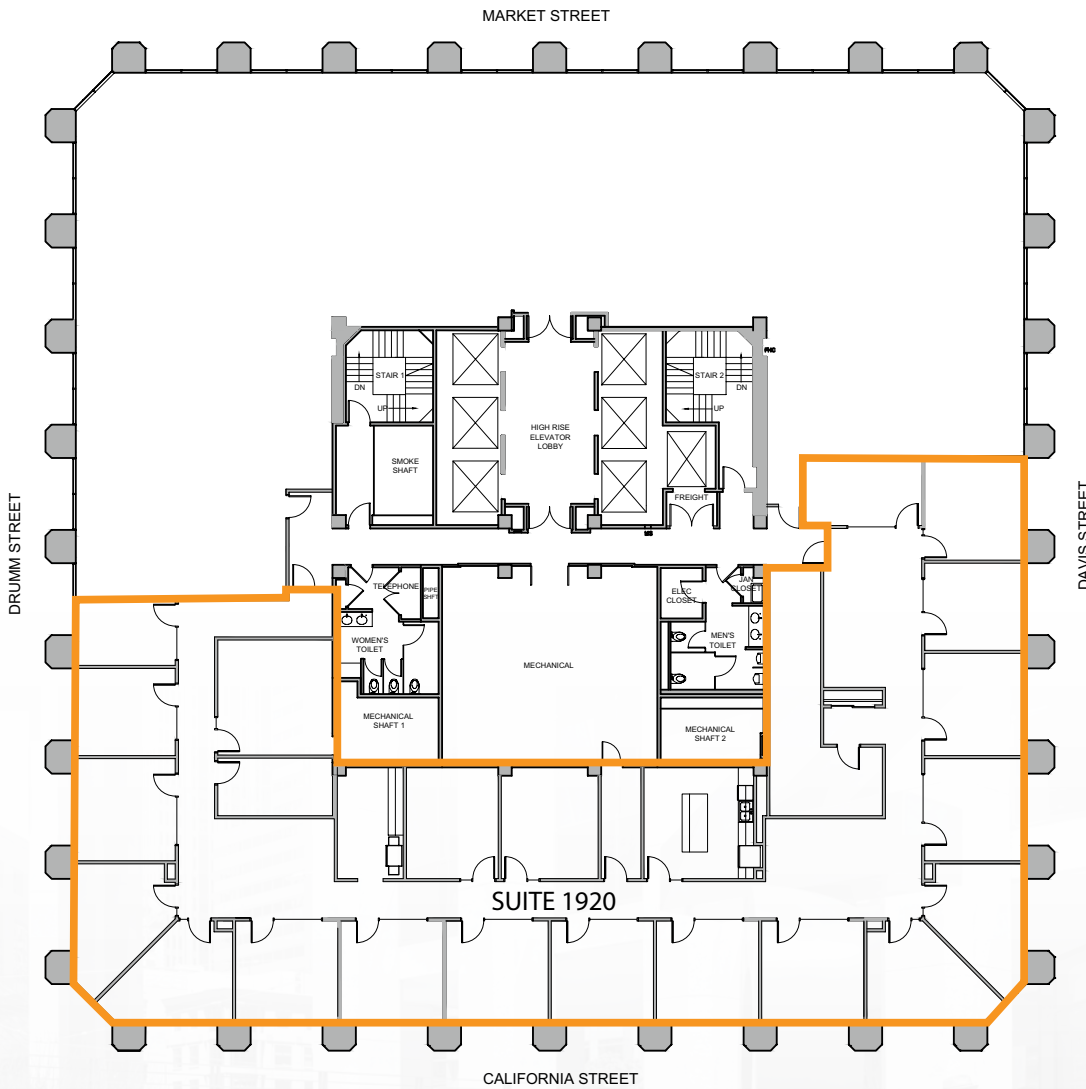
HIGHLIGHTS

- Private office intensive with 25 offices
- 4 conference rooms
- Boardroom
- Spacious lunchroom
- 2 workrooms
- Open area
- Double door entry
- Stunning water and city views
- Available 8/1/22



VIEW VIRTUAL TOUR

SUITE



HIGHLIGHTS

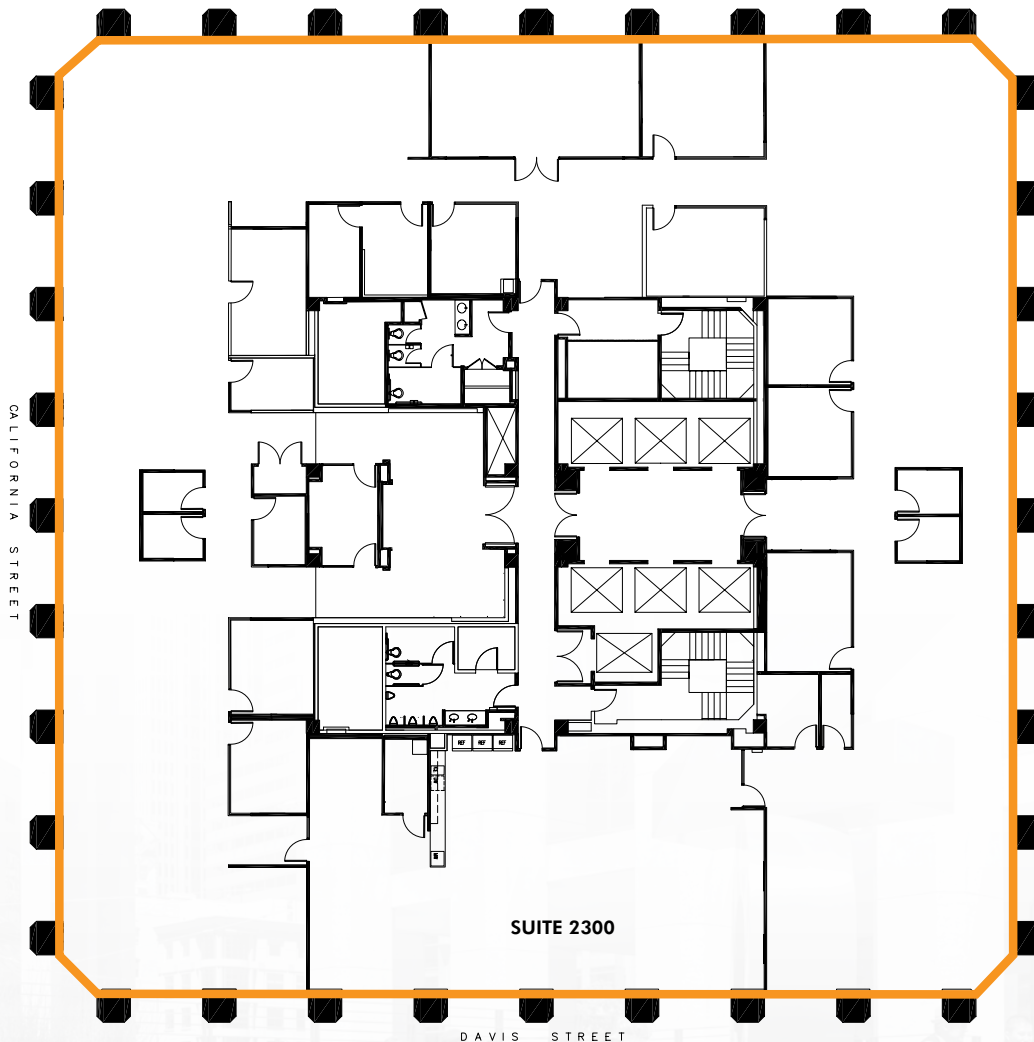
- Private office intensive with 17 perimeter offices
- 3 meeting rooms
- Kitchen
- Stunning bay and city views
- Available 8/1/22

VIEW VIRTUAL TOUR

SUITE

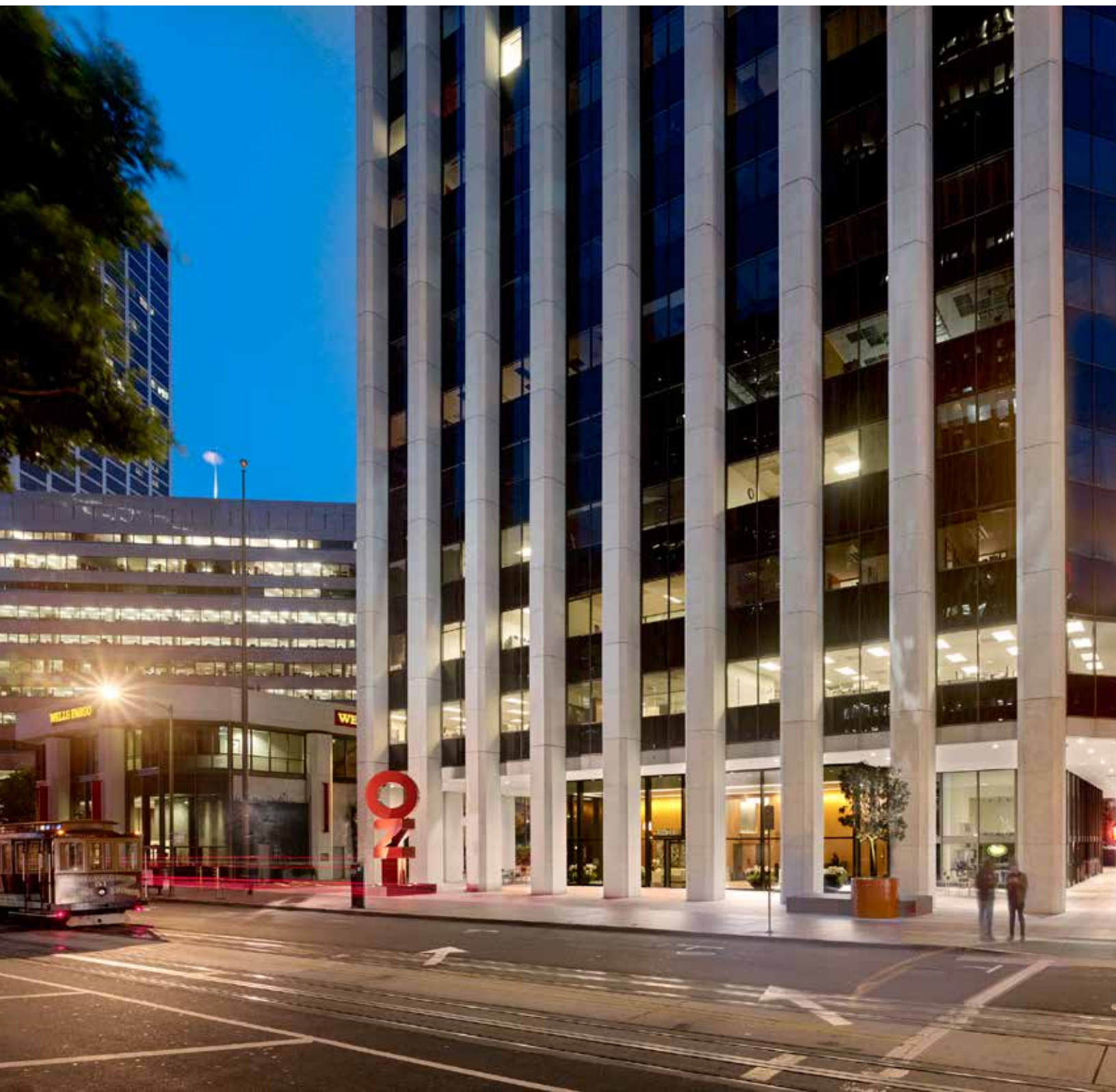


DRUM STREET



HIGHLIGHTS

- Full floor opportunity with spectacular views of the bay and city
- Open area for ~120 workstations
- 8 conference rooms
- Boardroom
- 2 huddle rooms
- 5 phone rooms
- Large breakroom
- 3 lounge area
- Available 11/1/22



FOR MORE INFORMATION, PLEASE CONTACT

PHIL TIPPETT

Executive Vice President

Lic. 00849777

+1 415 772 0239

phil.tippett@cbre.com

MARK MCLAUGHLIN

First Vice President

Lic. 01862408

+1 415 772 0329

mark.mclaughlin@cbre.com

CBRE