

# 2505 SECOND

AVENUE | SEATTLE, WA 98121

## FLOOR 4

SUITE 400: 1,433 RSF

SUITE 405: 957 RSF

SUITE 415: 3,219 RSF

### CONTACT

**SCOTTA ASHCRAFT**

Executive Vice President

+1 206 292 6063

[scotta.ashcraft@cbre.com](mailto:scotta.ashcraft@cbre.com)

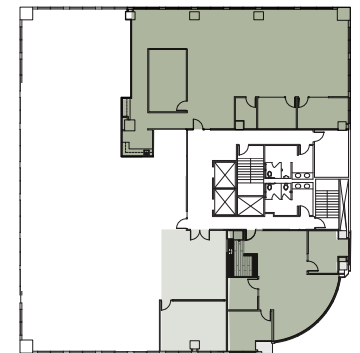
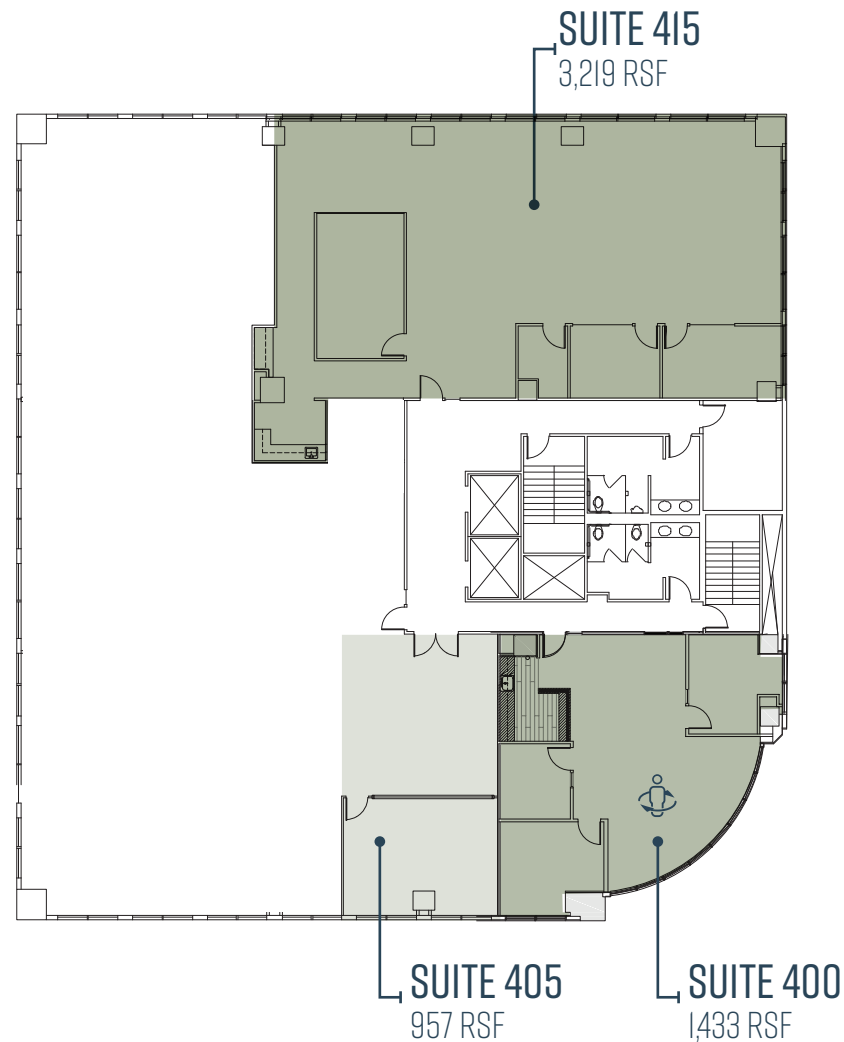
**KATIE NAGLE**

Senior Associate

+1 206 292 6146

[katie.nagle@cbre.com](mailto:katie.nagle@cbre.com)

**CBRE**



© 2026 CBRE, Inc. All rights reserved. This information has been obtained from sources believed reliable but has not been verified for accuracy or completeness. CBRE, Inc. makes no guarantee, representation or warranty and accepts no responsibility or liability as to the accuracy, completeness, or reliability of the information contained herein. You should conduct a careful, independent investigation of the property and verify all information. Any reliance on this information is solely at your own risk. CBRE and the CBRE logo are service marks of CBRE, Inc. All other marks displayed on this document are the property of their respective owners, and the use of such marks does not imply any affiliation with or endorsement of CBRE. 3-25-26 BSO