

FOR LEASE

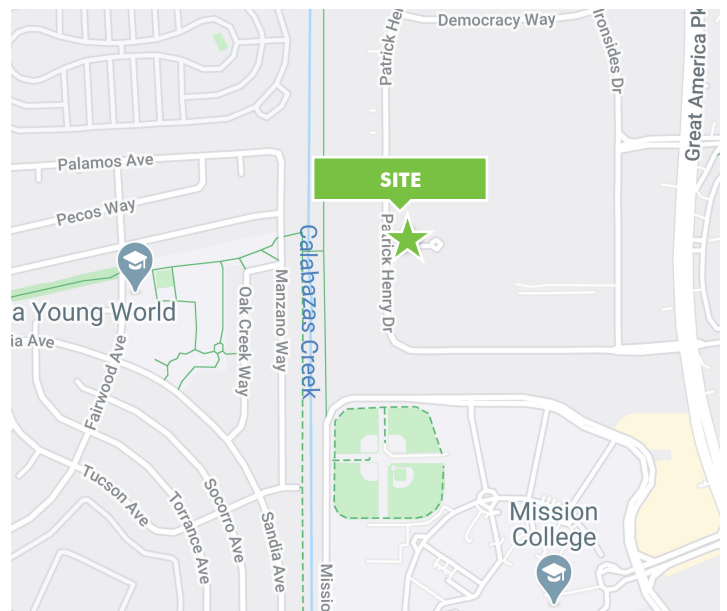
# GREAT AMERICA TECHNOLOGY PARK

4701 PATRICK HENRY DRIVE, SUITE B15  
SANTA CLARA, CA

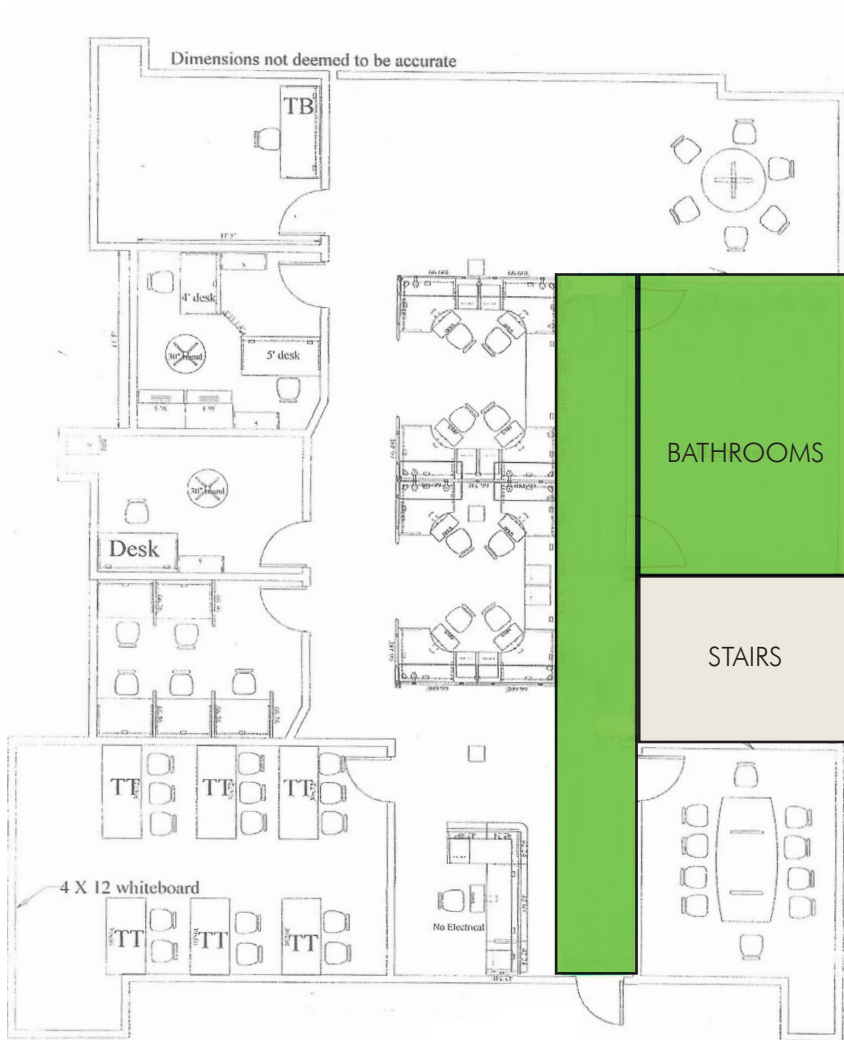


## PROPERTY HIGHLIGHTS

- **2,900 SF | Plug & Play possibility**
- **Good Window Line**
- **Excellent Santa Clara Location**
- **Training Room**
- **Conference Room**
- **4 - private offices**
- **Open Area for Cubicles**
- **Break Area**
- **Owner to Occupy upstairs of Premises**
- **Call for Pricing / Call to Tour**



# FLOOR PLAN



 Shared with ownership on a limited basis

## PLEASE CONTACT:

### FRANK FRIEDRICH

Senior Vice President  
+1 408 453 7495  
frank.friedrich@cbre.com  
Lic. 01159876

### CBRE, INC.

225 W Santa Clara St, 12th Fl  
San Jose, CA 95113  
+1 408 453 7400  
Lic. 00409987

© 2020 CBRE, Inc. All rights reserved. This information has been obtained from sources believed reliable, but has not been verified for accuracy or completeness. You should conduct a careful, independent investigation of the property and verify all information. Any reliance on this information is solely at your own risk. CBRE and the CBRE logo are service marks of CBRE, Inc. All other marks displayed on this document are the property of their respective owners, and the use of such logos does not imply any affiliation with or endorsement of CBRE. Photos herein are the property of their respective owners. Use of these images without the express written consent of the owner is prohibited.