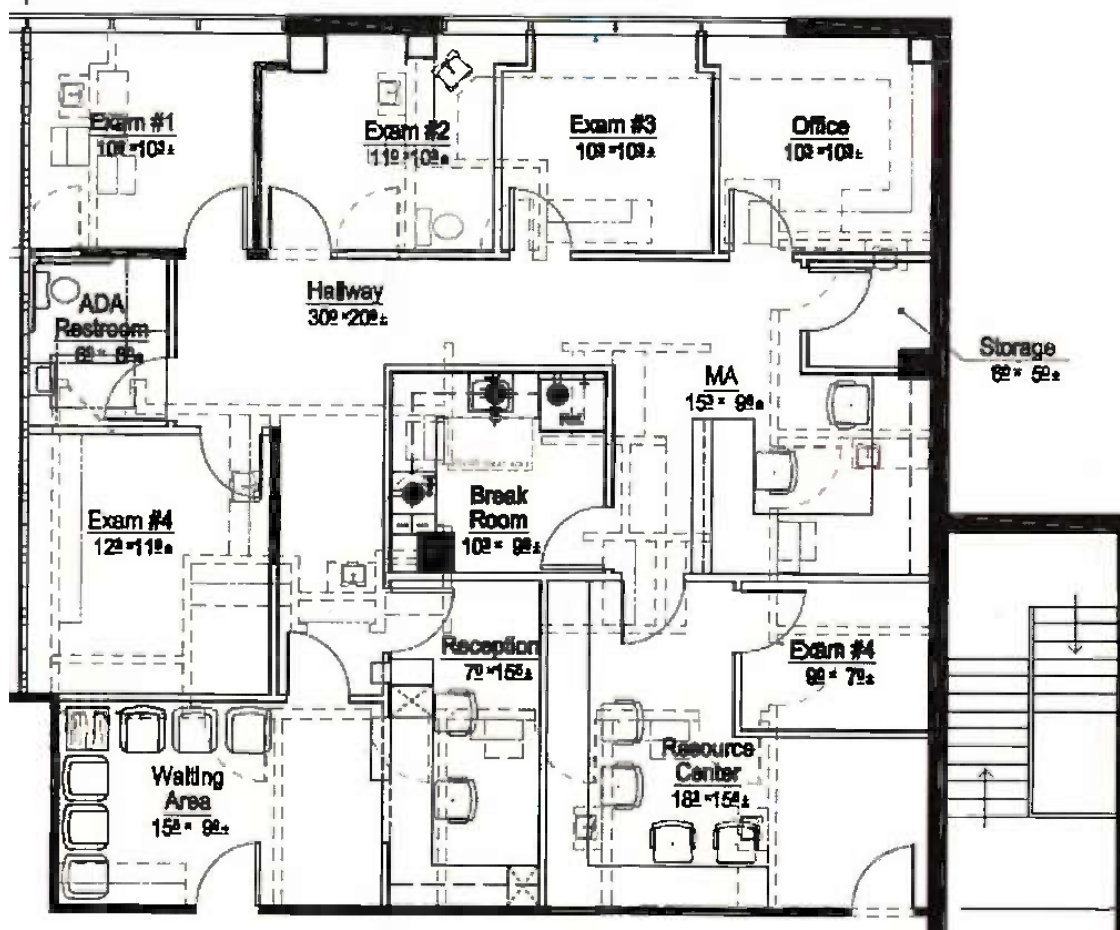


SUITE 315
1,894 SF

MEDICAL CENTER OF AURORA ASPEN PEAK BUILDING

1421 S POTOMAC STREET
AURORA, COLORADO



Proximity Plan

LEASING

STEPHANI GASKINS
+1 720 528 6346
STEPHANI.GASKINS@CBRE.COM

ANNA SCHORNSTEIN
+1 303 583 2099
ANNA.SCHORNSTEIN@CBRE.COM

Healthpeak® | DOC LISTED NYSE
CBRE