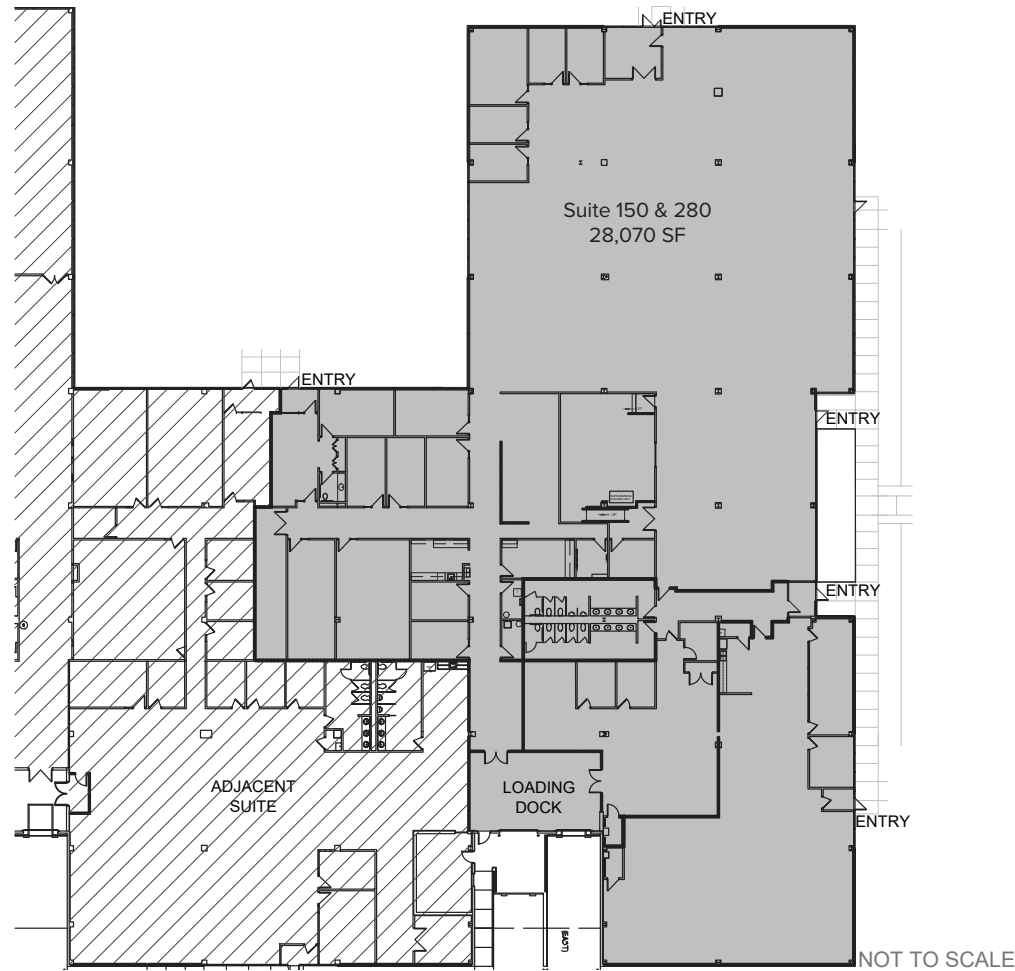


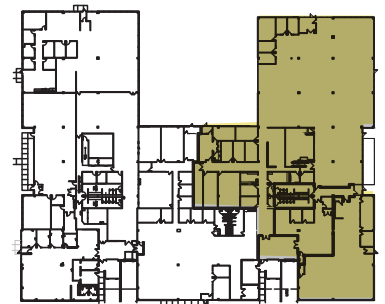
2200 WESTERN COURT

SUITES 150 & 280 | 28,070 SF

- Office/Warehouse
- Shared Loading - 1 Dock, 1 Step Van
- Divisible to 21,039 SF and 7,031 SF



KEYPLAN



LISLE
BUSINESS
CENTER

JEFFREY
MANN

Senior Vice President
+1 630 573 7076
jeffrey.mann@cbre.com

ADAM
LAWLER

First Vice President
+1 630 368 2610
adam.lawler@cbre.com

CBRE