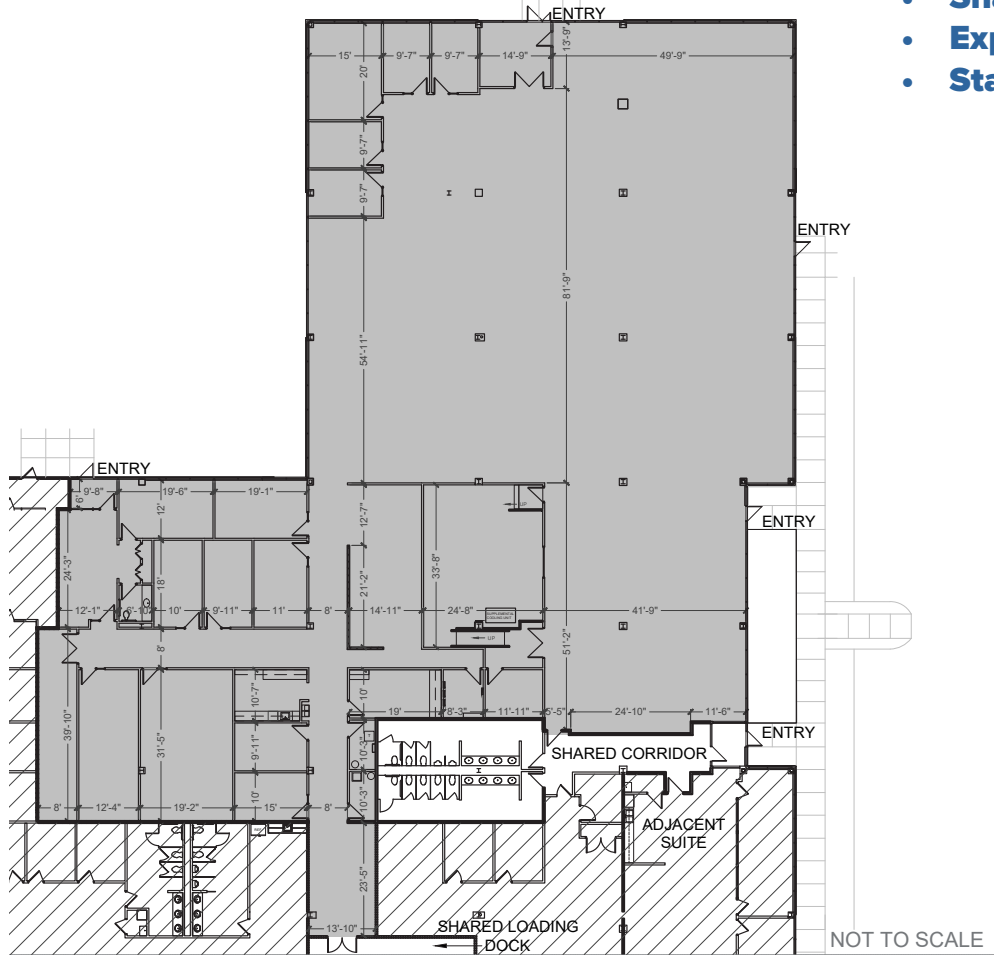


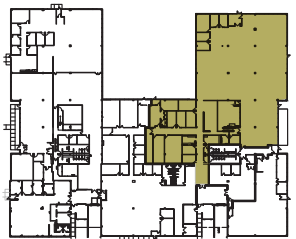
2200 WESTERN COURT

SUITE 150 | 21,039 SF

- Office/Warehouse
- Shared Loading - 1 Dock, 1 Ste Van
- Expandable to 28,070 SF
- Standby Generator



KEYPLAN



↑
Shared Loading Dock

**LISLE
BUSINESS
CENTER**

**JEFFREY
MANN**
Senior Vice President
+1 630 573 7076
jeffrey.mann@cbre.com

**ADAM
LAWLER**
First Vice President
+1 630 368 2610
adam.lawler@cbre.com

CBRE