

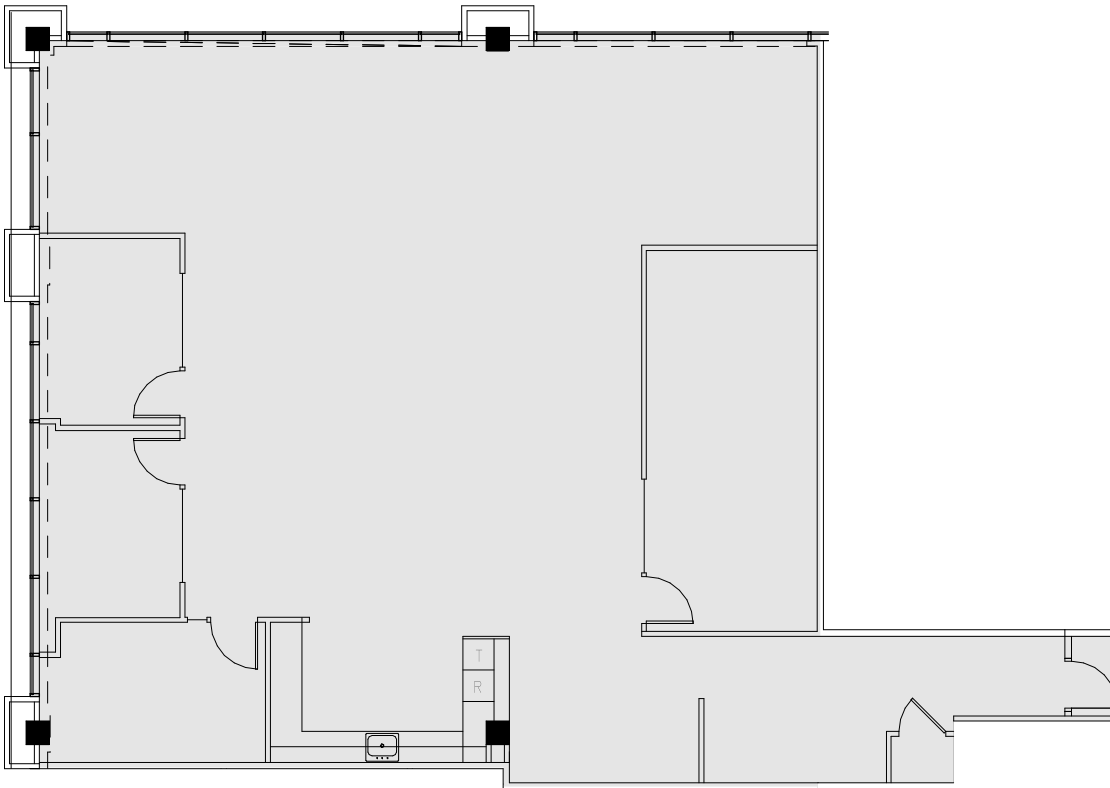
# THE OFFICES AT RIVERPARK

a **KBS** property

15809 BEAR CREEK PARKWAY  
REDMOND, WA 98052

**SUITE 130 | 2,821 RSF**

Available August 1, 2026



© 2026 CBRE, Inc. All rights reserved. This information has been obtained from sources believed reliable, but has not been verified for accuracy or completeness. You should conduct a careful, independent investigation of the property and verify all information. Any reliance on this information is solely at your own risk. CBRE and the CBRE logo are service marks of CBRE, Inc. All othermarks displayed onthis document are the property of their respective owners. Photos herein are the property of their respective owners. Use of these images without the express written consent of the owner is prohibited.

**SCOTT DAVIS**  
Executive Vice President  
+1 425 462 6912  
scott.davis@cbre.com

**TIM OWENS**  
Senior Vice President  
+1 425 462 6913  
tim.owens@cbre.com

Proudly leased  
and managed by

**CBRE**

CBRE, INC. | 929 108TH AVENUE NE | SUITE 700 | BELLEVUE, WA 98047

