

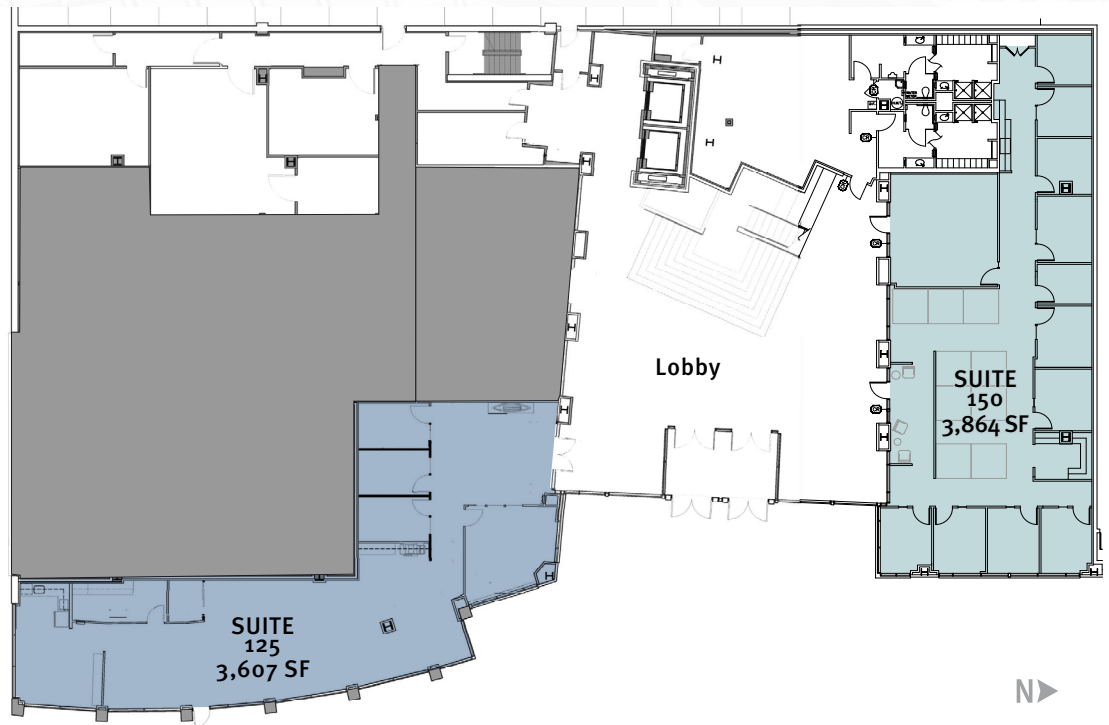


# West Lake Union Center

1505

SUITE	SIZE	COMMENTS
 Suite 125	3,607 SF	Ground floor office space with lobby exposure. Open space with three private offices, conference room and kitchen.
 Suite 150	3,864 SF	Ground floor suite with lobby exposure. Perimeter private offices, open area and conference room.



FOR MORE INFORMATION, PLEASE CONTACT:

**SCOTTA ASHCRAFT**

Executive Vice President  
+1 206 292 6063  
scotta.ashcraft@cbre.com

**NICK CARKONEN**

Senior Vice President  
+1 206 292 6039  
nick.carkonen@cbre.com

**RILEY SHEPHARD**

First Vice President  
+1 425 462 6932  
riley.shephard@cbre.com

