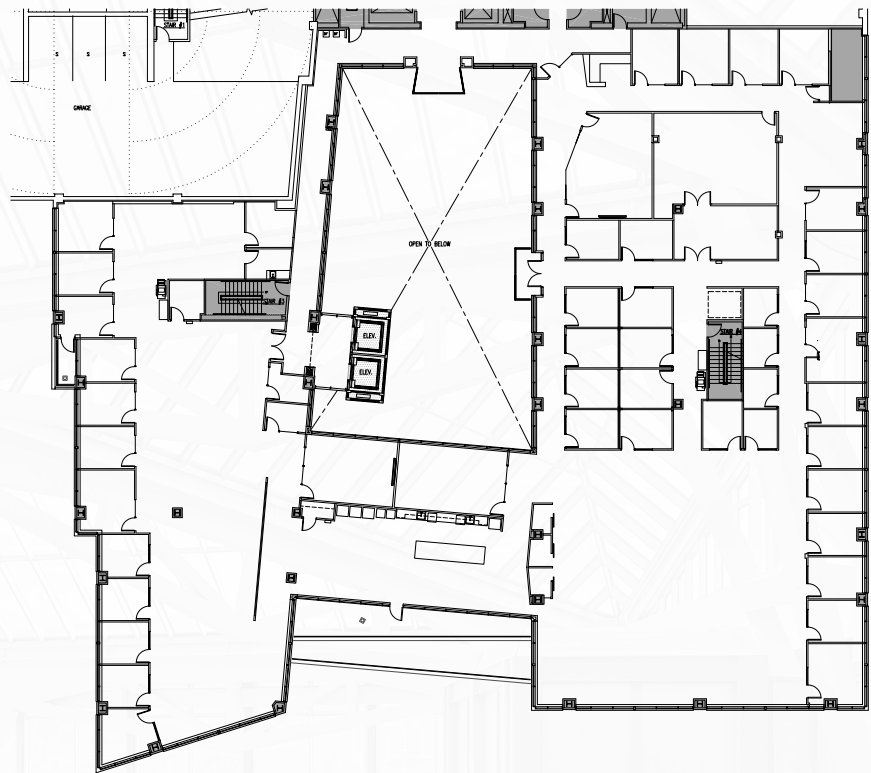


# West Lake Union Center

# 1505

| SUITE   | SIZE      | COMMENTS  |
|---|-----------|---|
|  Suite 500 | 24,341 SF | Full floor with a mix of private offices and open space. Private deck overlooking Lake Union. |



FOR MORE INFORMATION, PLEASE CONTACT:

**SCOTTA ASHCRAFT**

Executive Vice President  
+1 206 292 6063  
scotta.ashcraft@cbre.com

**NICK CARKONEN**

Senior Vice President  
+1 206 292 6039  
nick.carkonen@cbre.com

**RILEY SHEPHARD**

First Vice President  
+1 425 462 6932  
riley.shephard@cbre.com

