

For Lease

CBRE

# Prime Main Street Location

Fourth and Fifth Floor Office Space

209 East Main Street  
Louisville, KY 40202



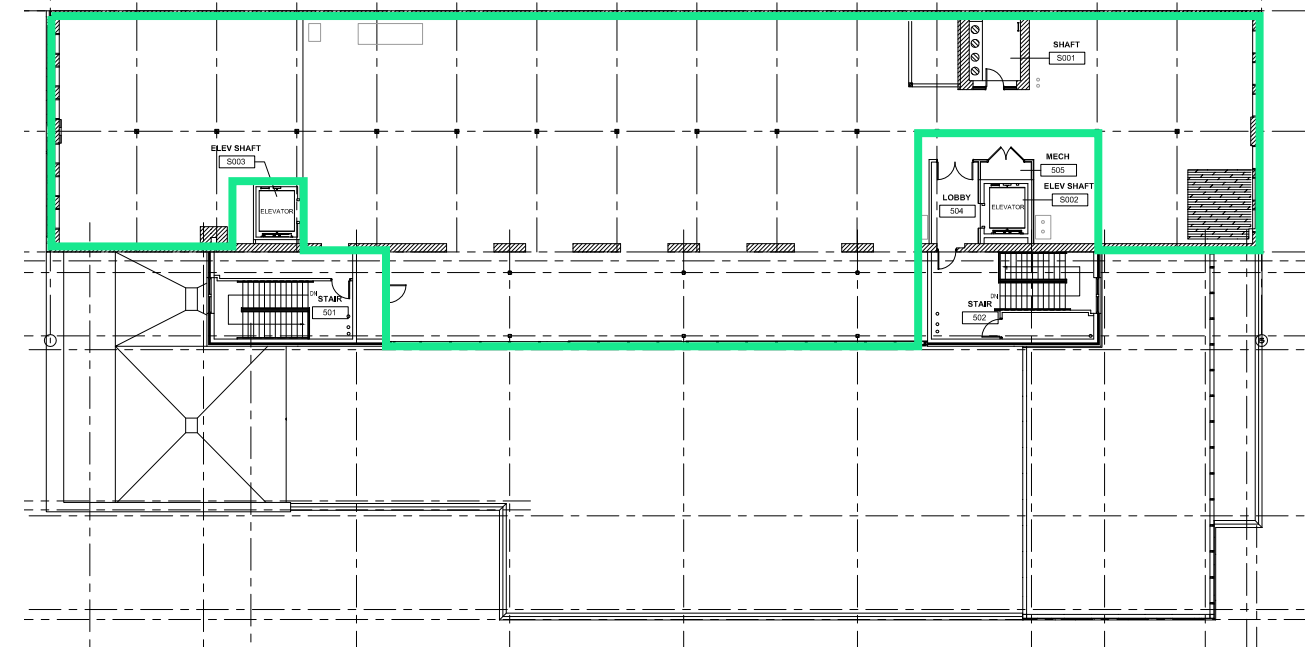


# Main Street

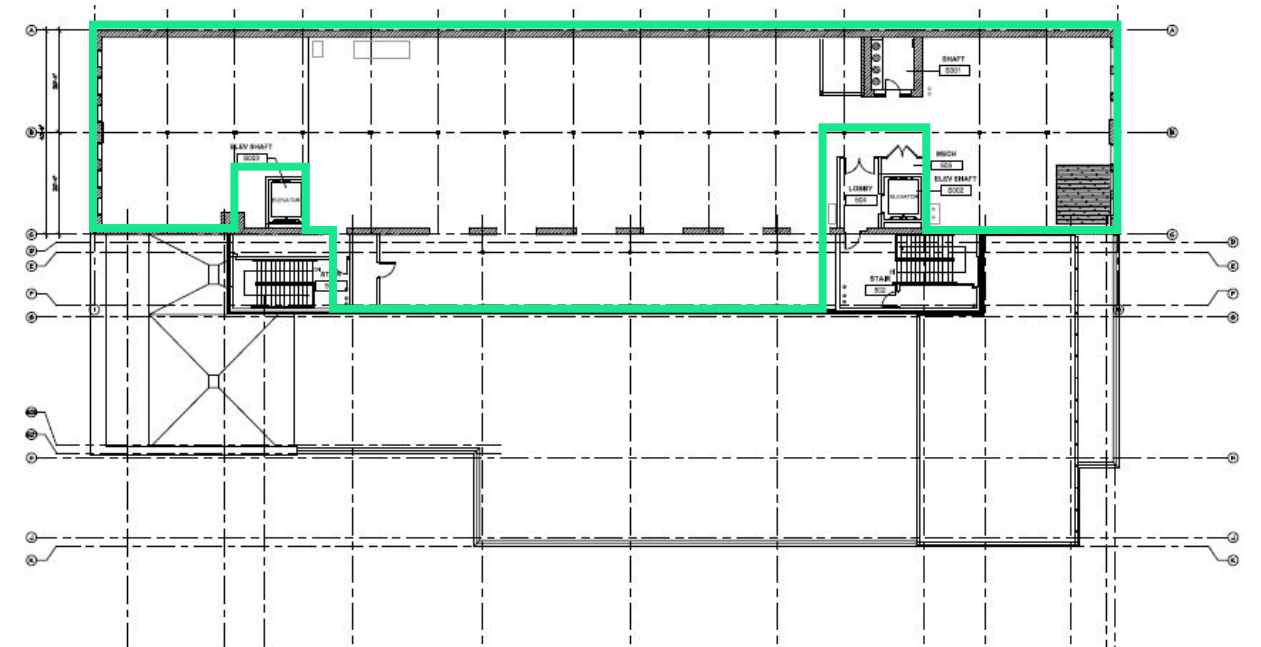
## Recently Renovated

- + 9,033± SF per floor available on floors 4 & 5
- + Future retail amenities on lower level & first floor
- + Thoroughbred Society located on the 2nd floor
- + 3rd floor Office tenant patio
- + Attached parking garage
- + Exciting location near Whiskey Row & Waterfront Park
- + Walkable to arena district and other downtown amenities
- + Signage & naming rights available for large anchor tenant
- + Dual elevators

FOURTH FLOOR OFFICE 9,033± SF



FIFTH FLOOR OFFICE 9,033± SF





**Fourth and Fifth Floor Office Space**  
209 East Main Street, Louisville, KY 40202

**For Lease**



## Contact Us

**Michael Somervell, CCIM**  
Senior Associate  
+1 502 412 7659  
michael.somervell@cbre.com

© 2021 CBRE, Inc. All rights reserved. This information has been obtained from sources believed reliable, but has not been verified for accuracy or completeness. You should conduct a careful, independent investigation of the property and verify all information. Any reliance on this information is solely at your own risk. CBRE and the CBRE logo are service marks of CBRE, Inc. All other marks displayed on this document are the property of their respective owners, and the use of such logos does not imply any affiliation with or endorsement of CBRE. Photos herein are the property of their respective owners. Use of these images without the express written consent of the owner is prohibited.