

Office | For Lease

CBRE

# Reflections Office Park

6465 Reflections Drive  
Dublin, OH 43017



\$16.00

Gross Lease Rate

## Building Features

- Efficient Floor Plan
- 3,628 SF available on the 2nd Floor
- Great Location
  - Scenic setting and landscaping surrounding a beautiful lake
  - Easy access to major roadways (Sawmill Road, SR-161, SR-33 and I-270)
- Highly visible Office Park Surrounded by Amenities
  - Restaurant, retail stores, etc.
- Lease Rate - \$16.00/SF Gross, plus tenant pays janitorial

3,628 SF

Available Square Feet

1987

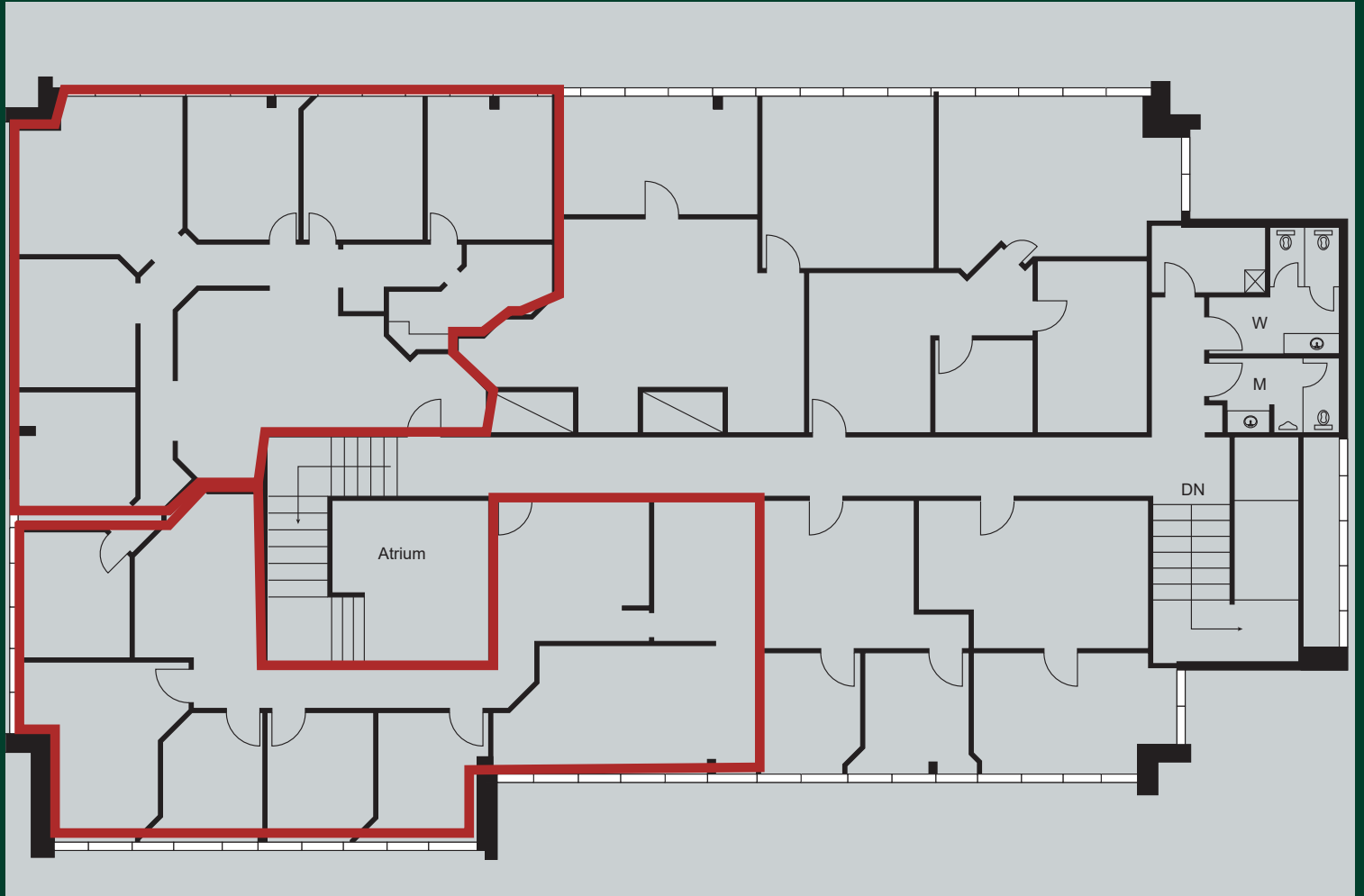
Year Built



# FLOORPLAN

Reflections Office Park  
6465 Reflections Drive | Dublin, OH 43017

2nd Floor - 1,662 SF and 1,966 SF



# Reflections Office Park

6465 Reflections Drive | Dublin, OH 43017

# For Lease



## Contact Us

**Don Matsanoff**

First Vice President

+1 614 430 5000

[don.matsanoff@cbre.com](mailto:don.matsanoff@cbre.com)

© 2025 CBRE, Inc. All rights reserved. This information has been obtained from sources believed reliable but has not been verified for accuracy or completeness. CBRE, Inc. makes no guarantee, representation or warranty and accepts no responsibility or liability as to the accuracy, completeness, or reliability of the information contained herein. You should conduct a careful, independent investigation of the property and verify all information. Any reliance on this information is solely at your own risk. CBRE and the CBRE logo are service marks of CBRE, Inc. All other marks displayed on this document are the property of their respective owners, and the use of such marks does not imply any affiliation with or endorsement of CBRE. Photos herein are the property of their respective owners. Use of these images without the express written consent of the owner is prohibited.

[www.cbre.us/columbus](http://www.cbre.us/columbus)

The CBRE logo, consisting of the letters 'CBRE' in a bold, white, sans-serif font.